

Barnet Education and Skills Service Management Structure

June 2015

EDUCATION AND SKILLS DIRECTOR

Ian J Harrison

**Head of School
Improvement**

Neil Marlow

**Head of Education
Partnership and
Commercial Services**

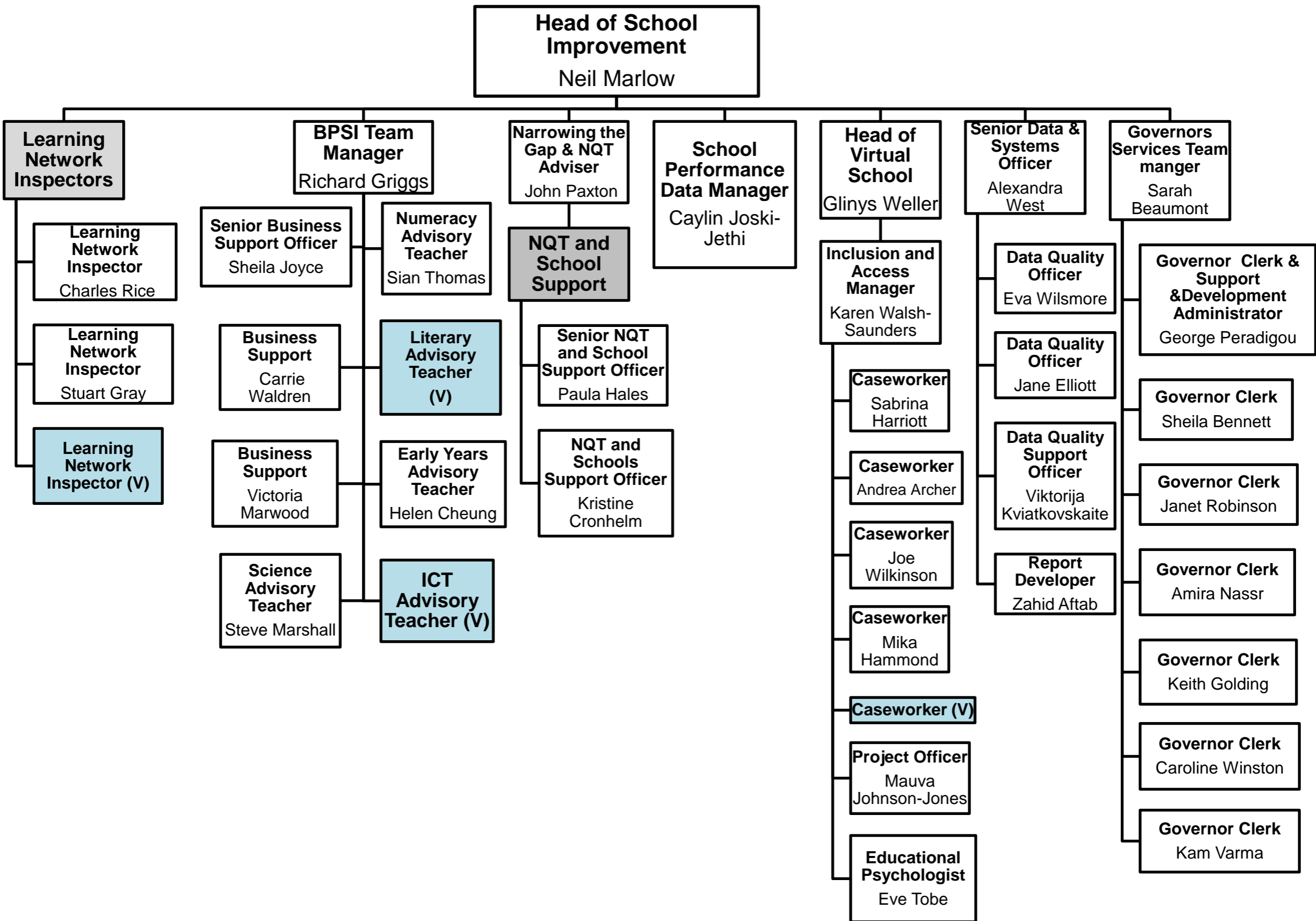
Alison Dawes

**Assistant Director,
SEND & Inclusion**

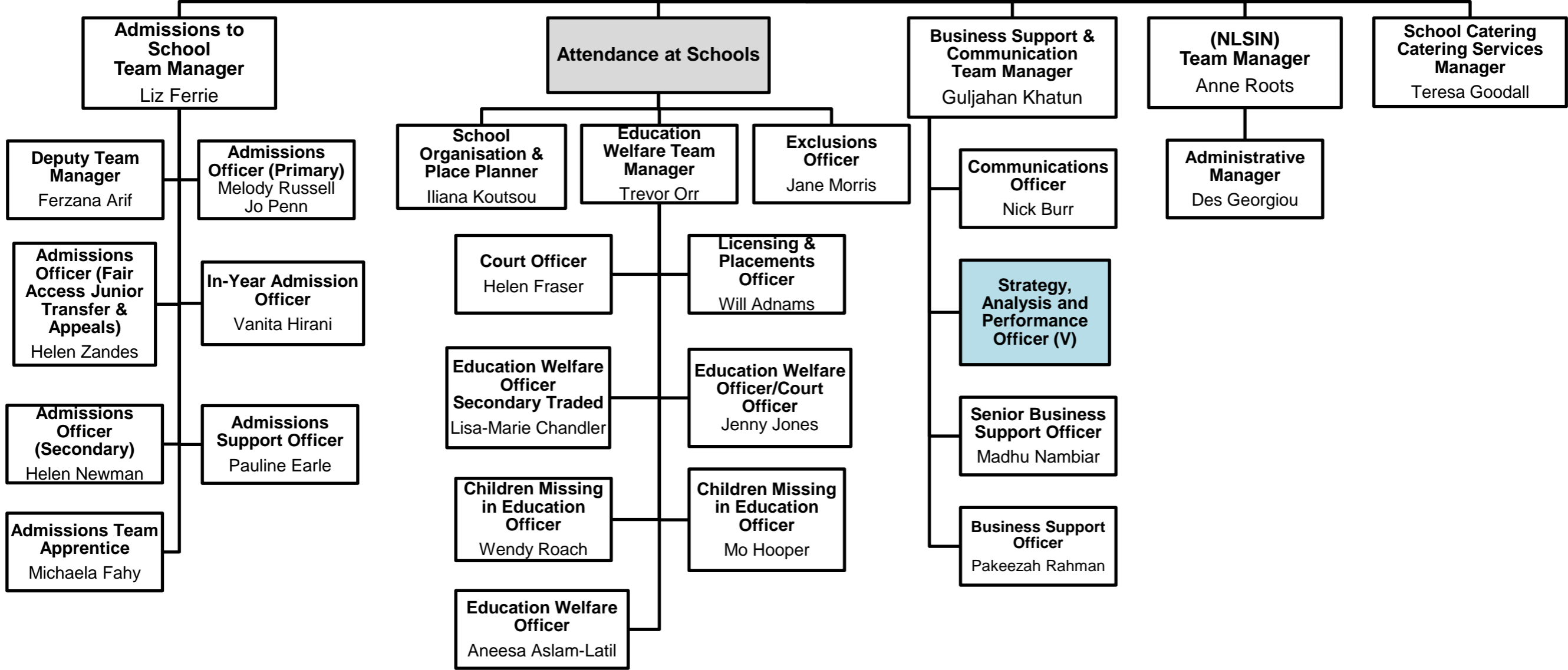
Jane Marriot

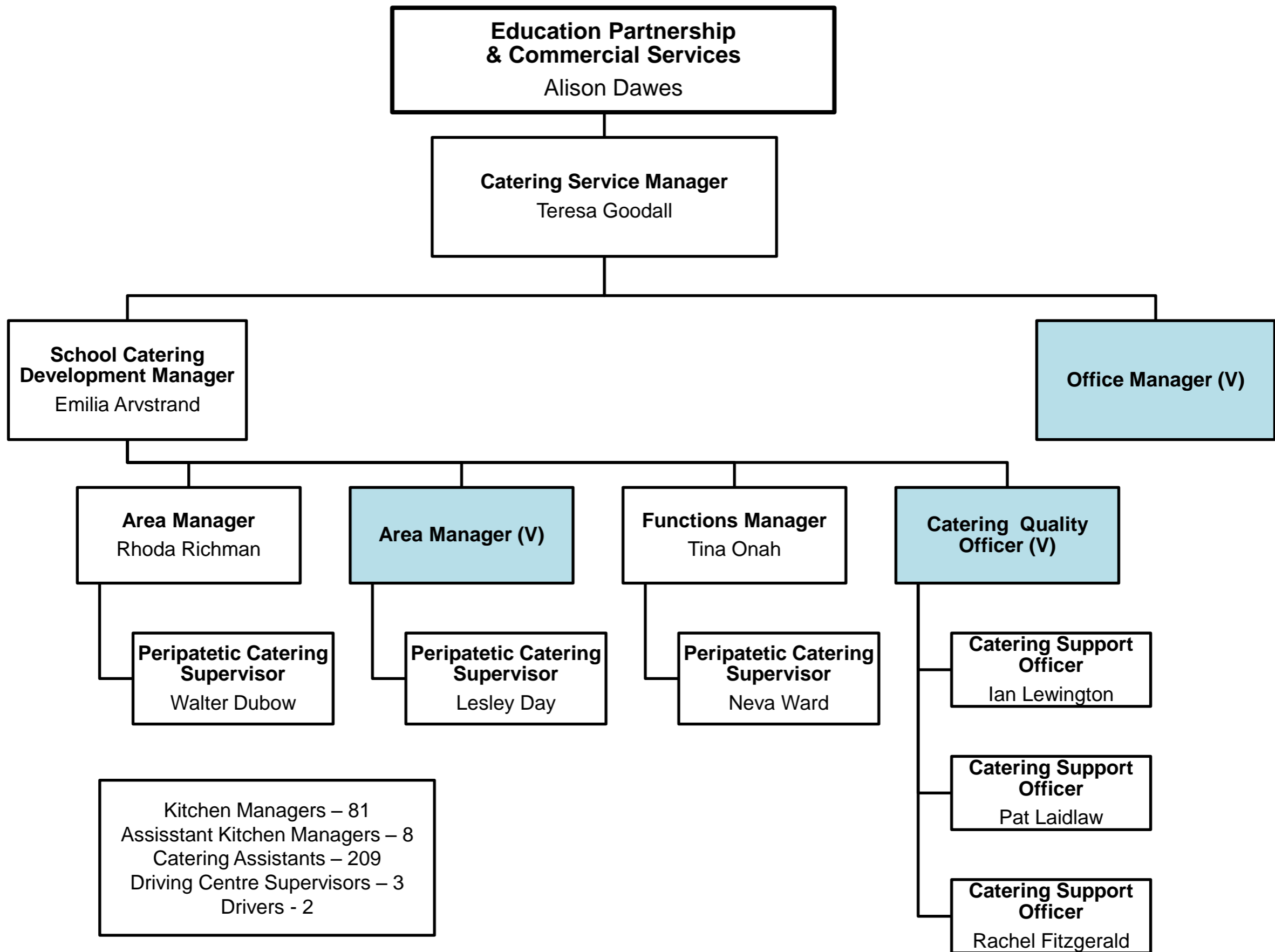
**Post 16
Education &
Skills Manager**

Elaine Runswick



**Head of Education Partnerships
& Commercial Services**
Alison Dawes





Assistant Director, SEND and Inclusion
Jane Marriott

**Head of Specialist
Inclusion Services**
(V)

**East Network
Senior Educational
Psychologist**
Sarah Geiger

**Educational
Psychologist**
Alexis Beaver

**Educational
Psychologist**
Stephanie Owen

**Educational
Psychologist**
Eve Tobe

**Educational
Psychologist (V)**

**Trainee
Educational
Psychologist
(V)**

**Central Network
Senior Educational
Psychologist**
Amanda Ryzman

**Educational
Psychologist**
Dianne Thomas

**Educational
Psychologist**
Michelle Stott

**Temp Educational
Psychologist**
Angela Tudor

**Educational
Psychologist (V)**

**Educational
Psychologist**
Nila Onwurah

**Trainee Educational
Psychologist
(V)**

**West Network
Senior Educational
Psychologist**
Marina Costa

**Educational
Psychologist**
Sue Bennett

**Educational
Psychologist**
Sarah Cryer

**Educational
Psychologist**
Jane Reichardt

**Trainee Educational
Psychologist**
Sneha Shah

**Educational
Psychologist**
Carole Wilding

Assistant Director, SEND and Inclusion

Jane Marriott

Head of Specialist Inclusion Services

(V)

