

Director's Briefing for Chairs and Vice-Chairs

Wednesday 23 May 2018

Welcome



— with —



SEND Update

Simon James, Assistant Director
SEND and Inclusion



— with —



Briefing for Chairs and Vice-Chairs of School Governing Bodies

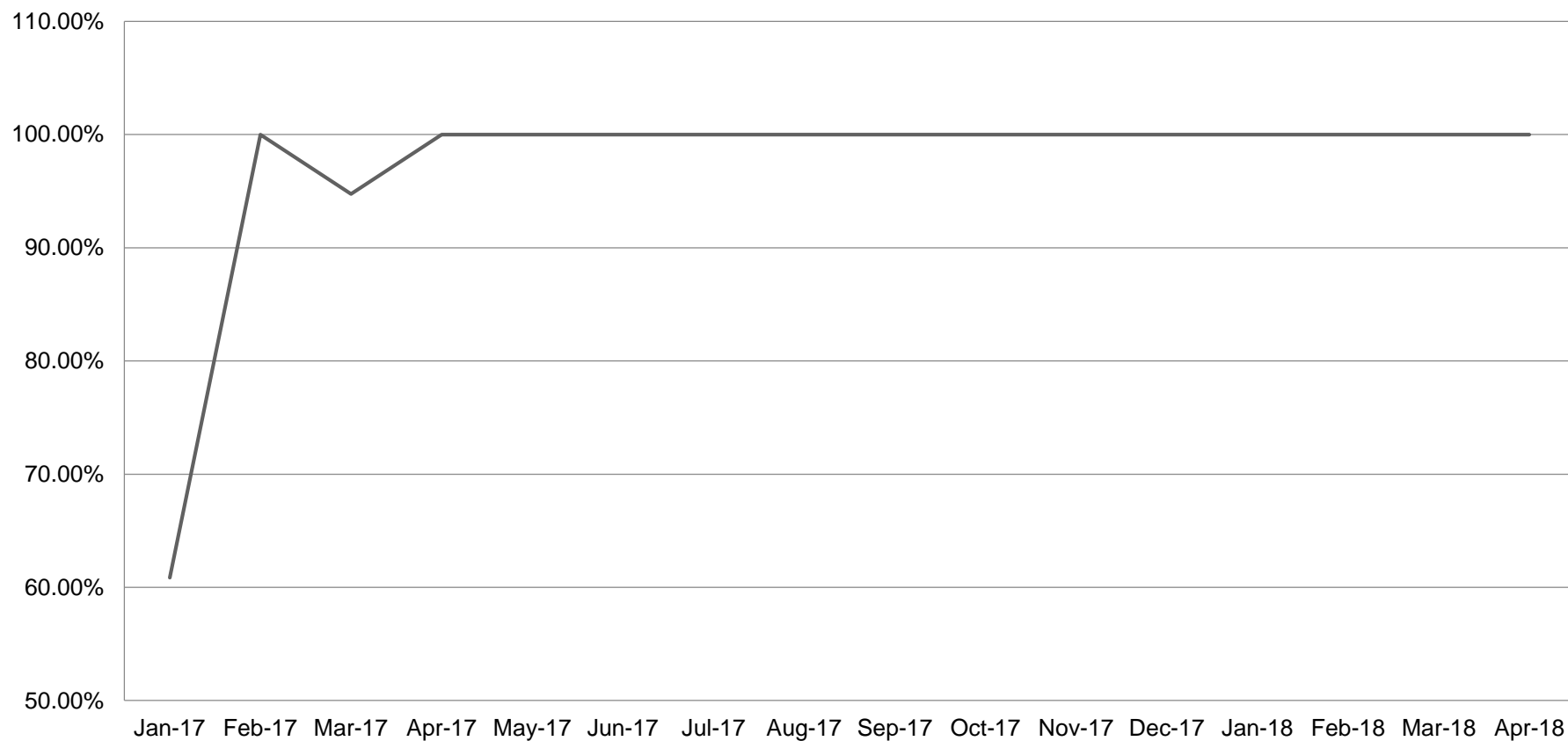
23 May 2018

Agenda

- SEN Performance
- EHCP Quality
- Therapy commissioning
- New provisions
- Local offer



% of new assessments finalised on time by month



EHCP Quality

Quarterly Audit Summary

	Auditor grades	
	Number	Proportion
Outstanding	1	3%
Good	30	79%
Requires improvement	7	18%
Inadequate	0	0%



Children's Therapies



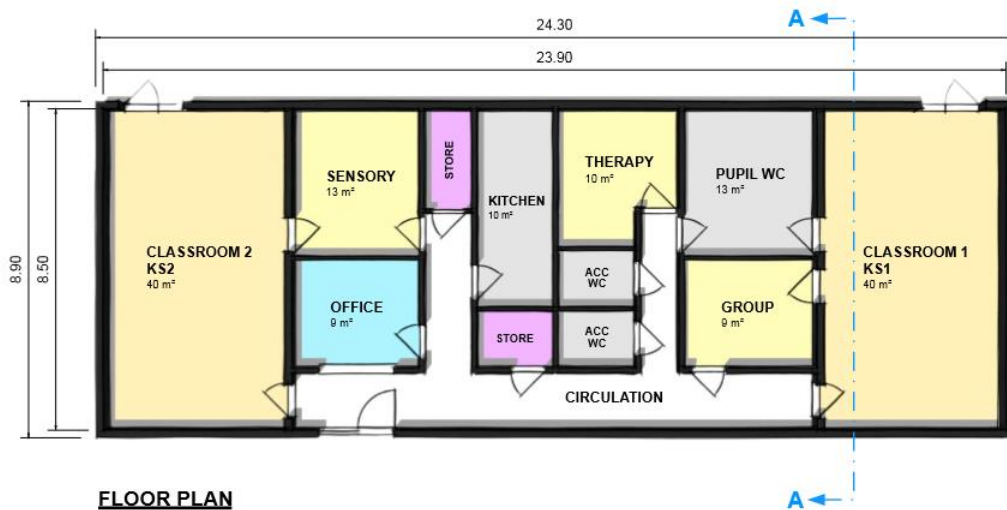
East London
NHS Foundation Trust



New SEN Provisions

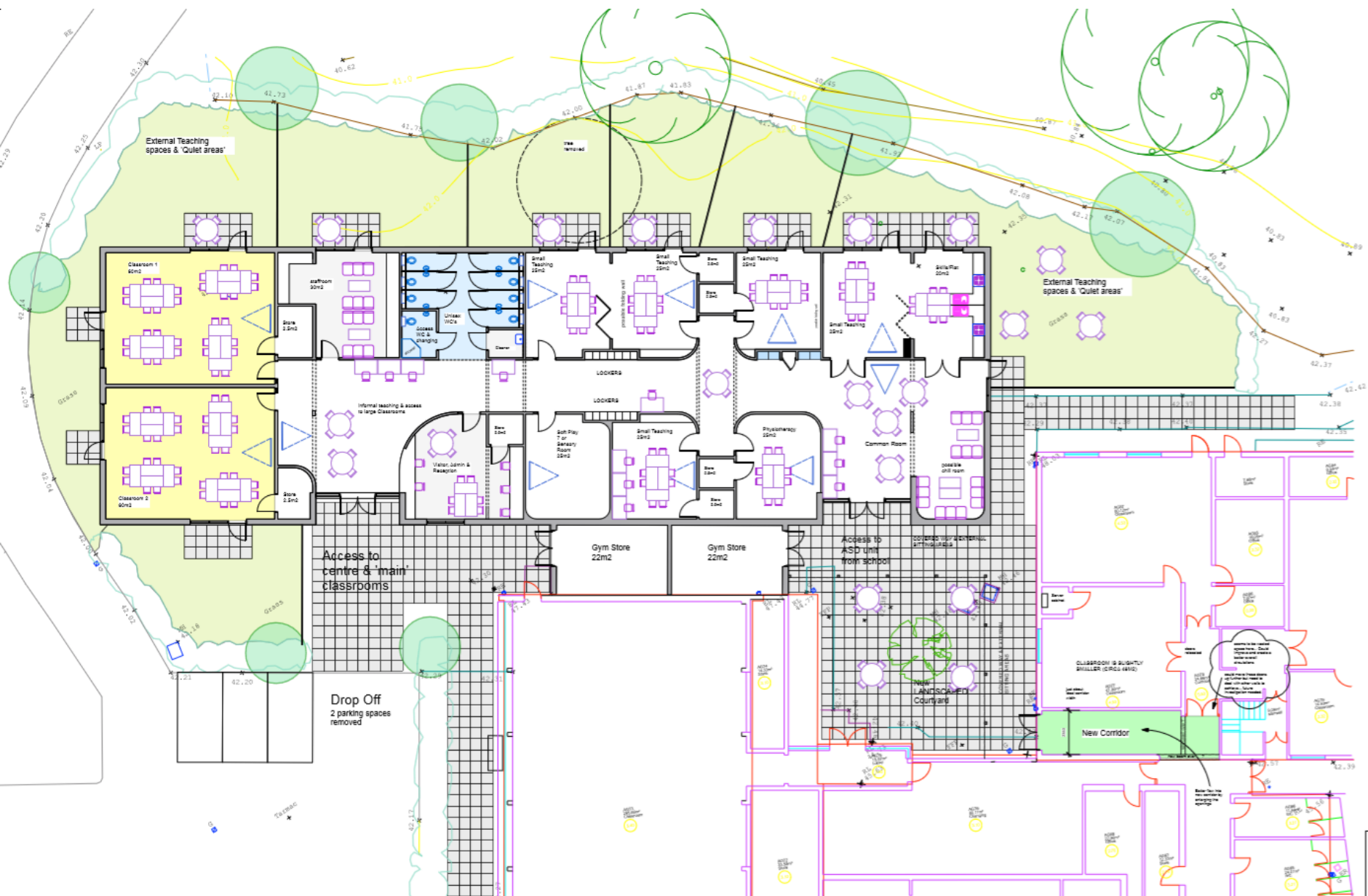
School	Designation
Chalgrove	ASD
Whitefield	ASD
Barnet & Southgate	ASD / SEMH
Another secondary	SEMH





INDICATIVE 3D VISUALISATION
Final appearance/materials may change

BUILDING INFORMATION





Barnet Local Offer

Search the site:

e.g. Autism, Support



Home

Information and Advice

You Said We Did

Find Services

Events

News

Resource Library

Contact Us



Announcing our new website

Isn't it looking great! Check out our Events



If you know what you need help and advice about then please choose a subject from below:



Barnet Chairs' Development Programme

Bronwen Tumani
National Leader of Governance



— with —



Have you been a Chair of Governors for 12 months plus?

Do you feel you would benefit from further professional development?

From September 2018 Barnet Governor Services will be running the

Barnet Chairs Development Programme



— with —



‘Changing Climate & the current mixed economy of schools’.

On 19th June 2018, there will be an introductory session that is open to all Chairs of Governors on:

Course Leader: Miranda Perry

Guest Speaker: Bronwen Tuman

Time & Venue: 6.30-9.30pm Foulds School, Byng Road, EN5 4NR

Finances are tight, recruitment of the best colleagues is hard, and the educational landscape in England over the last four years has changed dramatically. There are potentially hard decisions ahead. So, what is the way forward for your school? For example, is the ‘stand alone’ primary model viable, does becoming part of a MAT inevitably lead to a loss of independence? This introductory module will focus on reviewing the school’s current constitution and whether it is meeting current need, along with ideas about possible structures in the future.



— with —



Programme Modules

The main programme will comprise 6 modules across the academic year (2 per term):

Module 1: Development of leadership & team building skills (09/10/18)

The first module will examine different leadership styles and how to flex your leadership style to effectively respond to changing circumstances within your schools.

Module 2: Development of coaching & mentoring skills (04/12/18)

This module will focus on understanding the principles of coaching; developing active listening and questioning skills, and some practical application of coaching.

Module 3: Reflection and review (05/02/19)

This module will take the form of self-reflection and will focus on learning to date.

Module 4: Handling Difficult Conversations (02/04/19)

Chairs frequently need to hold difficult conversations with a range of stakeholders. This module will explore the different types of conversations that Chairs have in their roles and focus on developing resilience and communication skills to ensure Chairs perform at their best.

Module 5: 360 Appraisal & GB Evaluation (14/05/19)

A key part of the programme focussing on obtaining feedback on your own performance as Chair and leading the wider self-evaluation of your Governing Body to ensure effectiveness.

Module 6: Effective Succession Planning (02/07/19)

The final module will explore how to ensure that your GB has an effective succession plan in place for key leadership roles and will examine how you can ensure buy-in and preparation from governors for these roles.

Programme Criteria

- *The programme will have an emphasis on self-development and will require you to reflect on your practice throughout the year, including undertaking a 360 degree appraisal.*
- *The programme is intended for Chairs of Governors who have been in post ideally for a minimum of one academic year (unless agreed otherwise by Governor Services).*
- *Chairs will be expected to sign up for the year and commit to attending the 6 modules. If a module is missed for a particular reason then it may be completed in a subsequent year.*
- *To apply please email Sarah Beaumont sarah.beaumont@barnet.gov.uk with a brief supporting statement explaining how you meet the criteria and providing confirmation of funding arrangements.*
- ***Cost: £300 per delegate of schools subscribing to the Governor Support and Development programme or BPSI, or £450 per delegate of schools not subscribing to the Governor Support and Development programme or BPSI***



— with —



OfSTED Update

Neil Marlow

Assistant Director, Traded Services,
and Head of School Improvement



— with —



Ofsted Inspections in Barnet 2017-2018

	School	Type of Inspection	Ofsted Judgement	Previous Judgement
1	Pavilion PRU	S5	Good	Good
2	Hollickwood	S5	Good	Requiring Improvement
3	Hampden Way Nursery	S8	Outstanding	Outstanding
4	Etz Chaim	S8	Good	Good
5	Wessex Gardens	Straight S5	Good	Good
6	Deansbrook Infants	S5	Good	Good
7	Whitefield	S8 converted to S5	Good	Good
8	St. Joseph's	S5	Requiring Improvement	No previous judgement as a primary school
9	The Compton	S5	Outstanding	Outstanding
10	Akiva	S8	Good	Good
11	Sacks Morasha	S8	Good + possibly Outstanding. S5 recommended	Good
12	Northgate	S8	Outstanding	Outstanding
13	Brookhill Nursery	S8	Outstanding	Outstanding
14	St. Margaret's Nursery	S8	Outstanding	Outstanding
15	Bell Lane	Straight S5	Requiring Improvement	Good
16	Dollis Infant	S8	Good	Good
17	Finchley Catholic	S8	Good	Good
18	Garden Suburb Infant	S8	Good	Good
19	Friern Barnet	S8	Good but S5 recommended as more evidence needed to ensure Good	Good
20	Moss Hall Juniors	S8	Report not published yet	Good
21	Livingstone	S8	Good	Good
22	Queenswell Junior	S8	Good	Good
23	London Academy	S5	Report not published yet	Good (as a secondary school)
24	Copthall	S5	Report not published yet	Requiring Improvement
25	Watling Park	S5	Report not published yet	No previous inspection
26				
27				

Currently (according to Watchsted) **93.6%** of schools in Barnet are Good or Outstanding (94.3% Primary, 95.7% Secondary) which ranks Barnet **24th** LA nationally, **18th** in London, **above** Outer London (92.4%) and National (87.8%) but **below** Inner London (94.7%), **Barnet is ranked 43rd LA for Primary and 17th LA for Secondary**

Including Nursery and Special Schools **94.9%** of schools are Good or Outstanding (with 37.8% Outstanding).

94.1% of our pupils are in Good or Outstanding schools



— with —



Ofsted Inspection Handbook – April 2018 update

Short inspections of good schools

The frequency of inspection is proportionate to the performance and circumstances of schools. Schools judged to be good at their previous section 5 inspection will normally receive a one-day short inspection, carried out under section 8, approximately every **four** years, as long as the quality of education remains good at each short inspection. The separate section 8 handbook explains how these short inspections will be carried out. Some good schools will automatically receive a full section 5 inspection instead of a section 8 short inspection. This will affect approximately a fifth of good schools, and will occur when Ofsted's risk assessment process indicates that the quality of provision may have deteriorated significantly.



— with —



Greater Focus on the wider curriculum

- Preparing pupils for the future means developing exposure to rich vocabulary
- Are schools developing skills and knowledge across the curriculum?
- Are topics systematically vocab rich to prepare pupils for their future education?
- Do pupils have access to a range of quality literature which introduces new vocab?
- Inspectors will test the impact that the school's curriculum is having on pupils' education in the future.
- How well does the curriculum enable pupils to make links over time?

Helen to do a BPSI training session later this term and a follow up in November (after next training session from Ofsted)

Exclusions

- Must be on disciplinary grounds
- Any exclusions must be formally recorded
- Children must not be sent home for a time to 'cool off'
- Informal exclusions for lunchtime are not allowed
- Inspectors will check patterns that link with the current national picture:
 - ☐ 3x more likely to be boys
 - ☐ 3x more likely to be Black Caribbean
 - ☐ 4x more likely to be disadvantaged
 - ☐ 7x more likely to have SEND

Governor Services

Neil Marlow

Assistant Director, Traded Services,
and Head of School Improvement



— with —



Pupil Attendance

Katie Dawbarn
Learning Network Inspector



— with —



Attendance Update

Katie Dawbarn

Last time I was here...

(January 2017)

Barnet was ranked 98th out of 152 LAs for primary attendance (a primary issue!)

Barnet was ranked 15th out of 152 LAs for secondary attendance

We were ranked 122nd for authorised absence



A marked improvement – data shared at last January Attendance Conference

AUTUMN AND SPRING 2016 AND 2017

We had moved up to 50th from 98th out of 152 LAs

Primary attendance (for the first time since records began) was above the national average



Even better news.... 2016 – 2017 – the whole year

- Barnet's rank of 19th narrowly missing out on the top 10% of local authorities in the country (i.e. 15th and above)
- The absence rate is better than national, London, Outer London and statistical neighbour averages.
- The rate of unauthorised absences improved in 2016/17 moving from 17th to 8th.
Therefore, Barnet is now in the top 10% of Local Authorities in the country for this indicator.
- The percentage of persistent absence put Barnet in the top 10% of Local Authorities in the country.



The best news of all...

Autumn Term 2017

We are now 14th
overall for primary
attendance – putting
Barnet in the top 10%



ALSO

Secondary schools are now
3rd overall in the country for
attendance (for Autumn 17)





However, there is no room for complacency...

We still need to tackle authorised absence:

- Issue in secondary schools and primaries:

Secondary: 47th

Primary: 66th



Next steps

Continue to work with our partners in health

Exploring 'coding' – some activities could be coded as 'education off site'

Encouraging schools to continue to work with parents on taking 'exceptional' leave

Providing hints and tips for schools – through our new BPSI external advisers



What you can do to help...

Support your schools in adopting a whole school approach – this includes your involvement

Challenge high levels of authorised absence – know the reasons

Know your attendance data

Review your attendance policies

Model good practice



Attendance of LAC

	LAC Overall Absence 2015	LAC Overall Absence 2016	LAC Overall Absence 2017
Barnet	6.40%	4%	5.50%
Statistical Neighbours	3.83%	3.75	3.93%
National	4%	3.90%	4.30%
London	4.30%	4.10%	4.60%
Barnet Rank			127

	LAC Unauthorised Absence 2015	LAC Unauthoris ed Absence 2016	LAC Unauthorised Absence 2017
Barnet	2.3%	1.1%	2.8%
Statistical Neighbours	0.85%	0.93%	0.82%
National	1%	1%	1.2%
London	1.2%	1.1%	1.5%
Barnet Rank			145

The Absence rate for LAC in Barnet was above Statistical Neighbours, London and National Average. Barnet is ranked 127th out of 152 LAs.

The Unauthorised Absence rate is high in comparison with Statistical Neighbours, London and National and ranks Barnet 145th.



Director's Briefing for Chairs and Vice-Chairs

Safe journey home!



— with —

