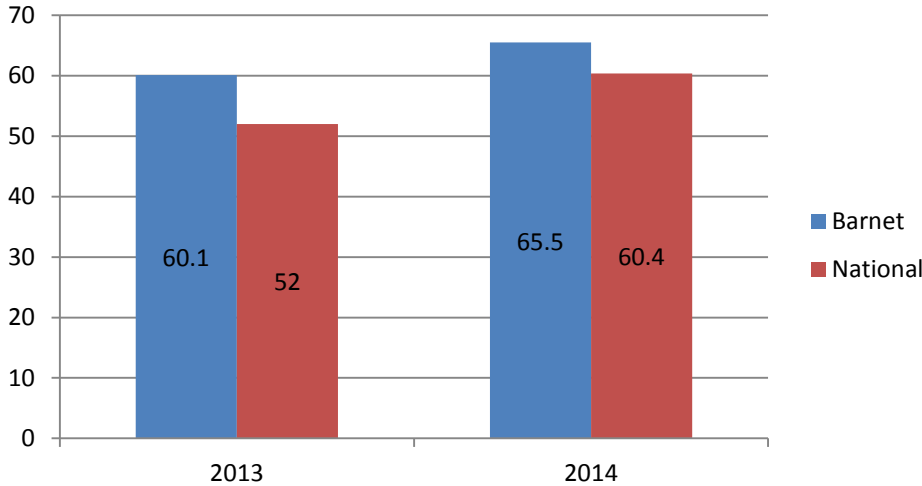


Barnet Achievement Data

2013-2014

Early Years Foundation Stage

% Good Level of Development, EYFS



65.5% Good Level of Development

5.4% increase from last year

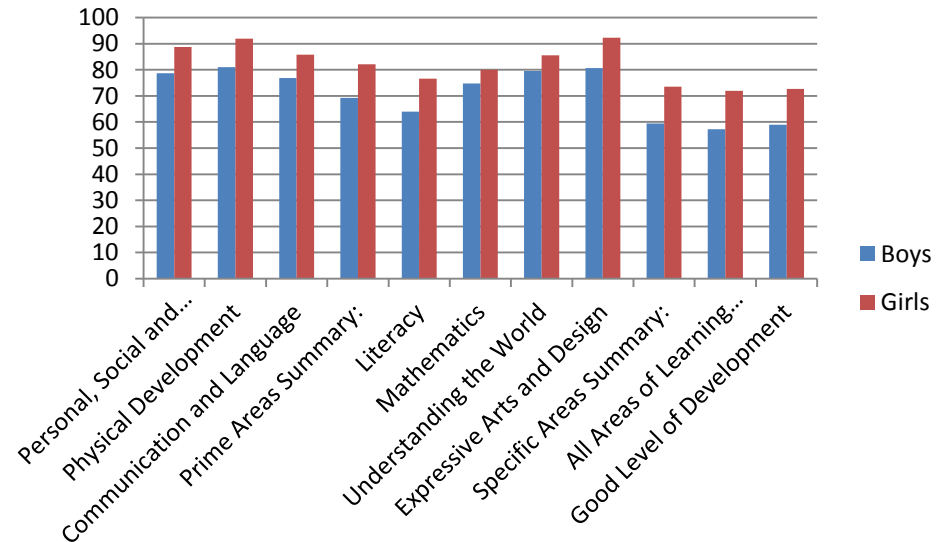
Gap between Barnet and national average **decreased by 3%**

13.8% difference between girls and boys (GLD)

Highest learning area for boys is Physical Development at **81%**

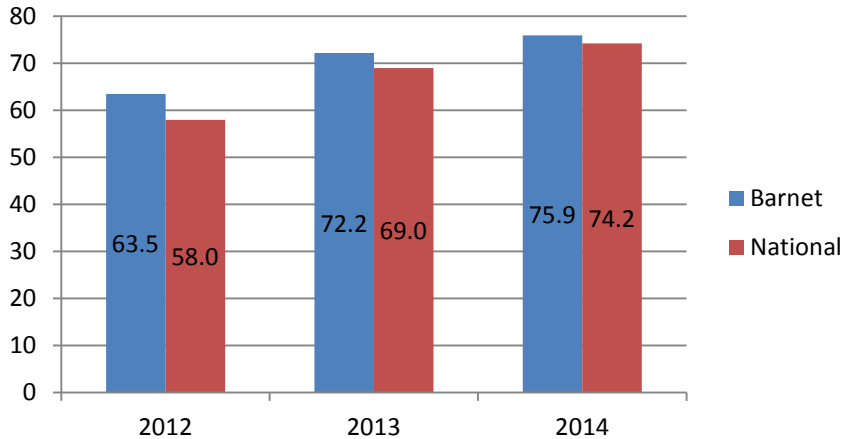
Highest learning area for girls is Expressive Arts and Design at **92.3%**

Attainment Gap EYFS, 2014, Barnet LA



Phonics (Year 1)

Year 1 Phonics, % Wa



75.9% Working at the expected level

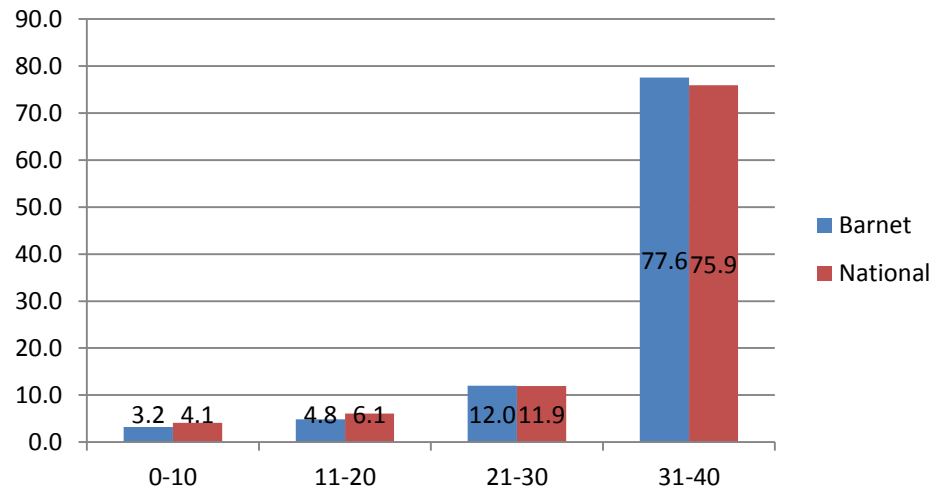
3.7% increase from last year

Gap between Barnet average and national decreased by **1.5%**

Barnet has a **lower proportion** of pupils at the low band ranges

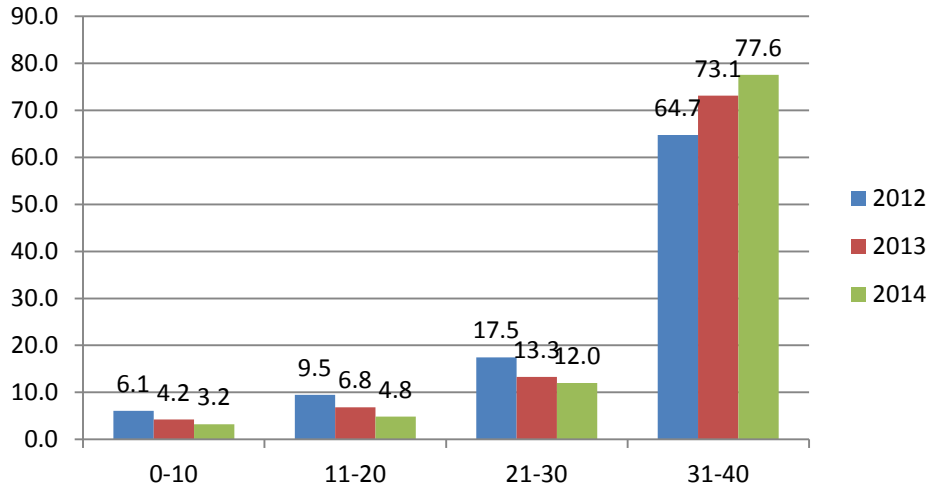
1.8% more Barnet pupils attain 21-40 points than nationally

Year 1 Phonics, Bandings, 2014



Phonics (Year 1)

Year 1 Phonics, Banding, Barnet



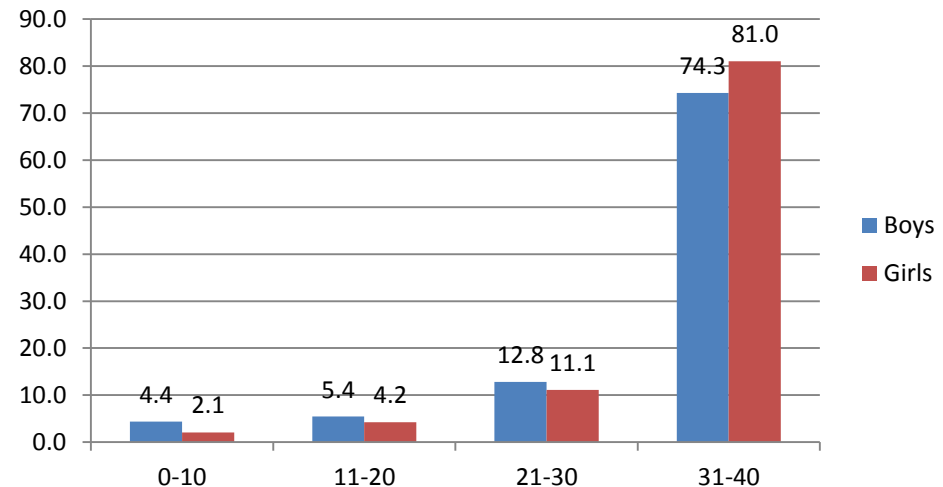
Shift in distribution of scores to 31-40 band range

% of scores in 0-10 point range has **approximately halved** since 2012

81% of girls score 31-40, compared to 74.3% of boys

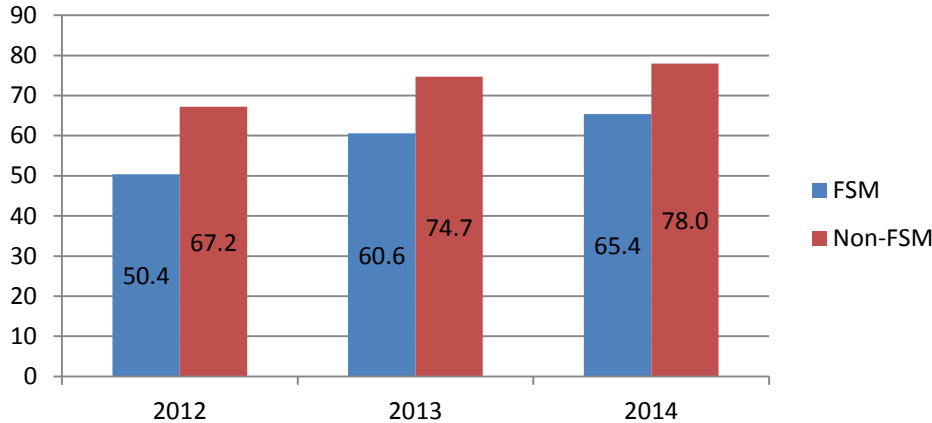
Boys are more than **twice as likely** as girls to score in the 0-10 band

Year 1 Phonics, Bandings, Barnet, 2014



Phonics (Year 1), FSM

Year 1 Phonics, Attainment Gap, Barnet



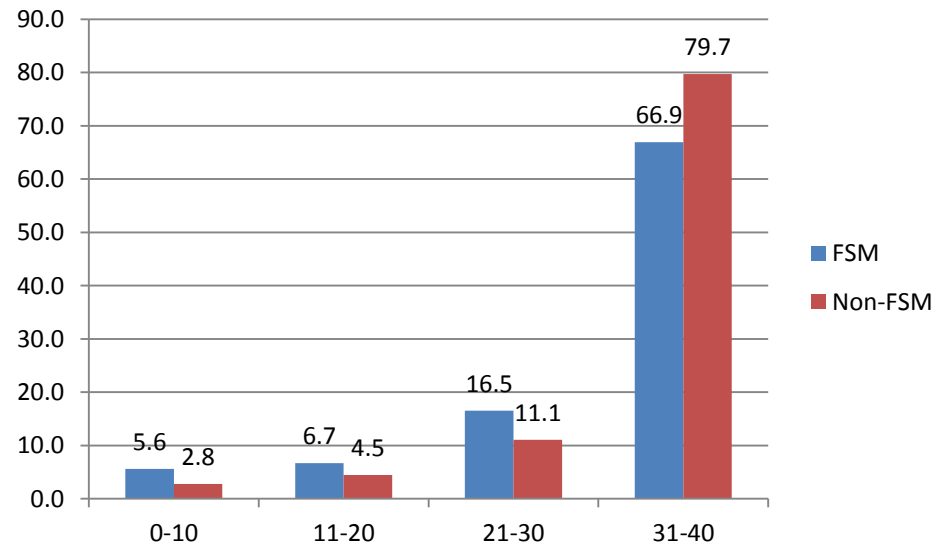
12.6% attainment gap in 2014

14.1% attainment gap in 2013
(decrease of **1.5%**)

16.8% attainment gap in 2012
(decrease of **4.2%**)

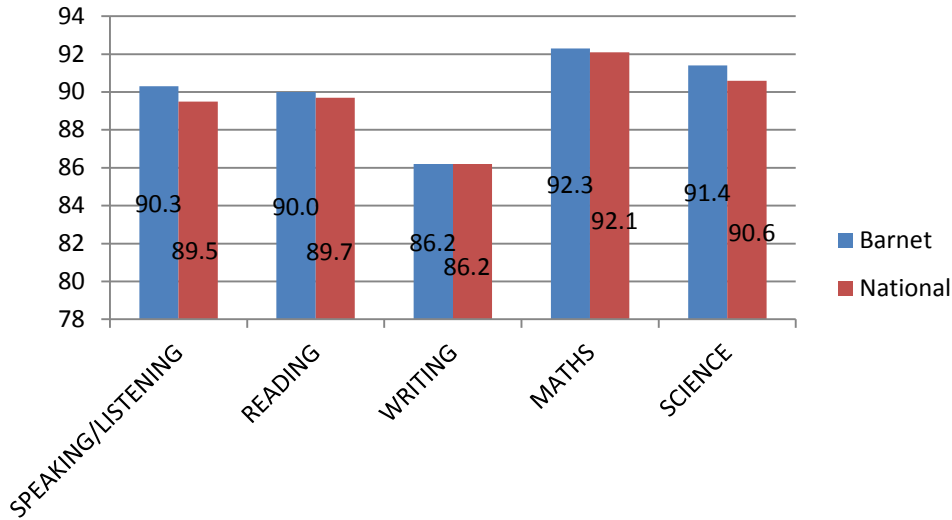
FSM children are **twice as likely** as non-FSM children to score in the 0-10 band

Approximately **1 in 3 FSM children** (33%) will attain below 31 points compared to approximately **1 in 4 non-FSM children** (20%)



Key Stage 1: 2014 Attainment

Key Stage 1, % Level 2 or above



92.3% attain Level 2 or above in Maths

86.2% attain a Level 2 or above in Writing

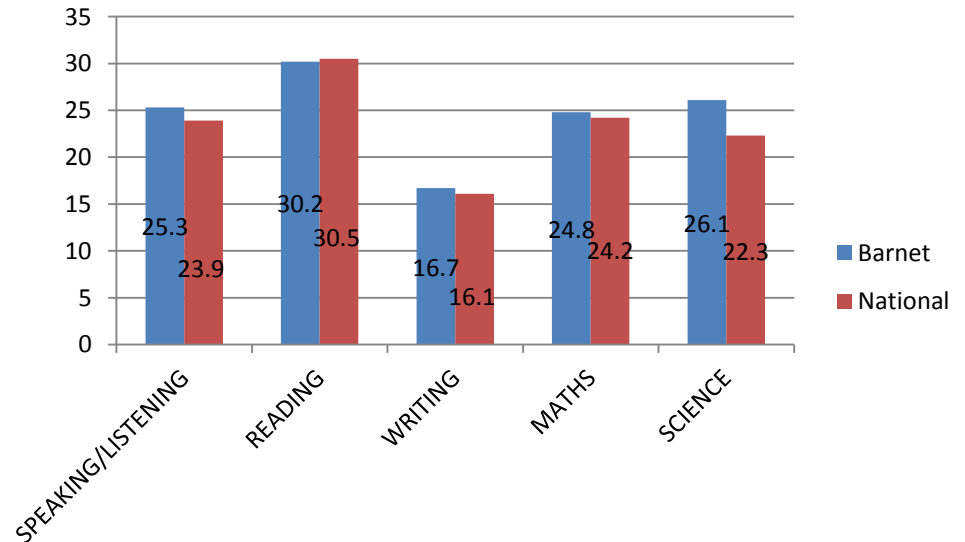
Science performs above the national average by **0.8%**

30% attain Level 3 or above in Reading

16.7% attain Level 3 or above in Writing

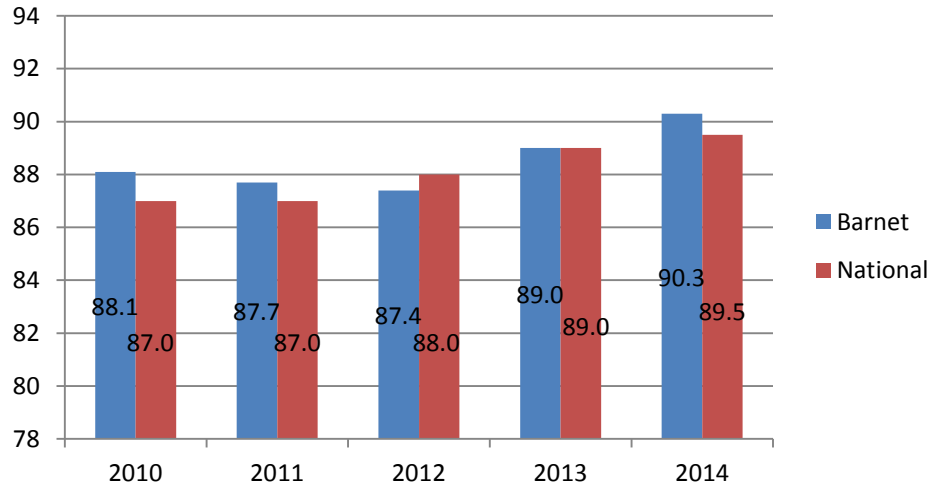
Science performs above the national average by **3.8%**

Key Stage 1, % Level 3 or above



Key Stage 1 (Subject Trends)

KS1 Speaking and Listening, Trend

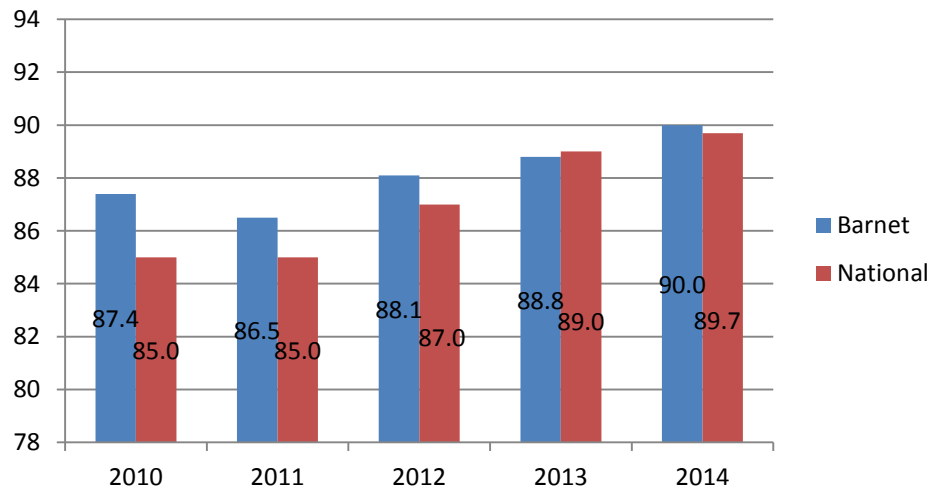


Speaking / Listening: Gap on national has closed and overtaken national over past 3 years

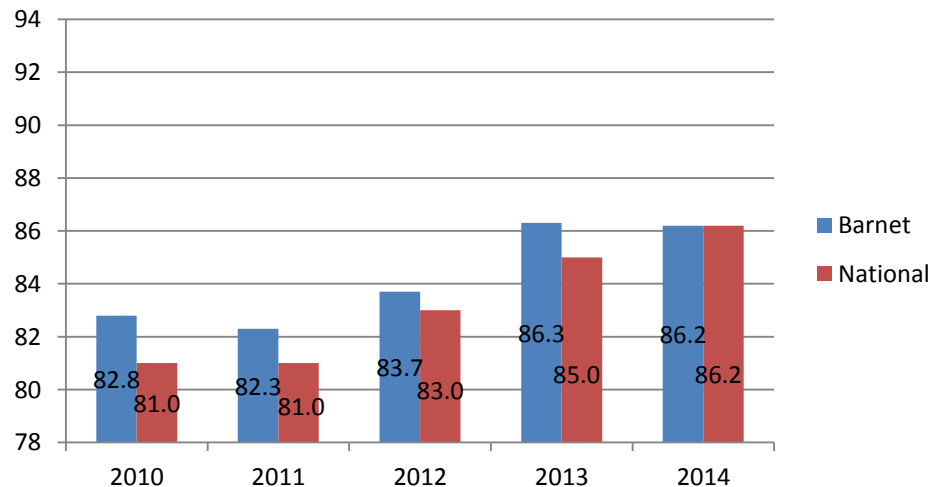
Reading: Reading attainment overtook national in 2014

Writing: Attainment decreased by **0.1%**. National gap may have closed.

KS1 Reading, Trend

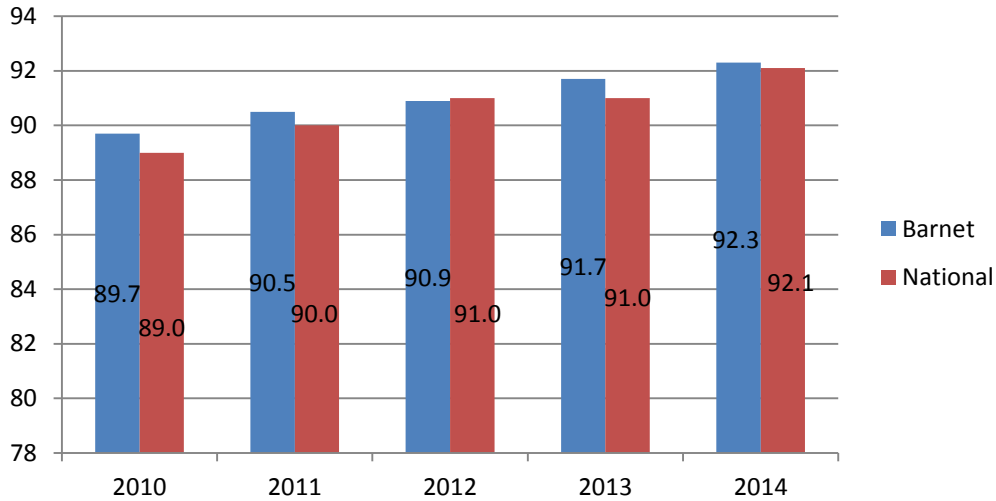


KS1 Writing Trend



Key Stage 1 (Subject Trends)

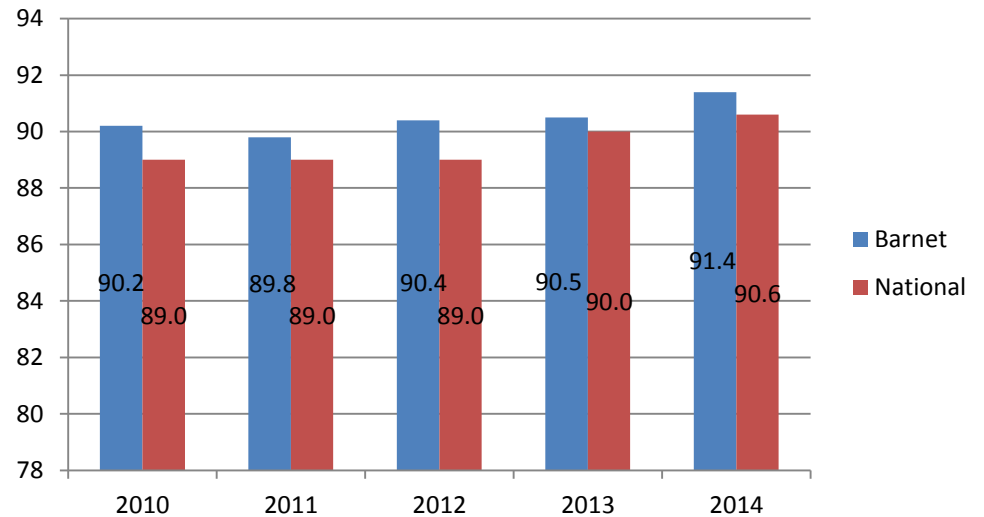
KS1 Mathematics Trend



Maths: 0.5% increase from 2013
(national 1.1%)

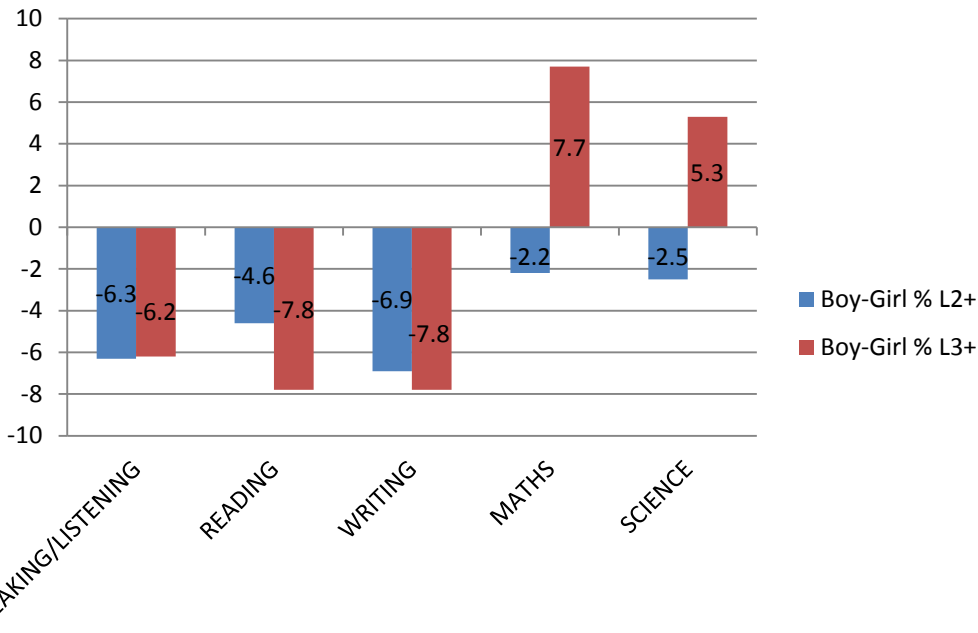
Science: 0.9% increase from 2013
(national 0.6% increase)

KS1 Science Trend



Key Stage 1 Attainment (Boys / Girls)

Key Stage 1 Attainment, % Point Difference, 2014 (Boys – Girls)



- At level 2+ boys underperform against girls for all KS1 subjects
- **-6.9%** difference in attainment in Writing (level 2 or above)
- At Level 3+ boys outperform girls in Maths and Science
- **-7.8%** difference in attainment Reading and Writing (level 3 or above)
- **+7.7%** difference in attainment in Maths (level 3 or above)

Key Stage 1 Summary

Positives

In line or above national in all areas in 2014

Speaking / Listening: Barnet has overtaken national over past 3 years

Reading: Reading attainment back above national again in 2014

Science: 0.9% increase from 2013 (national 0.6% increase)

Points to Note / Areas to improve

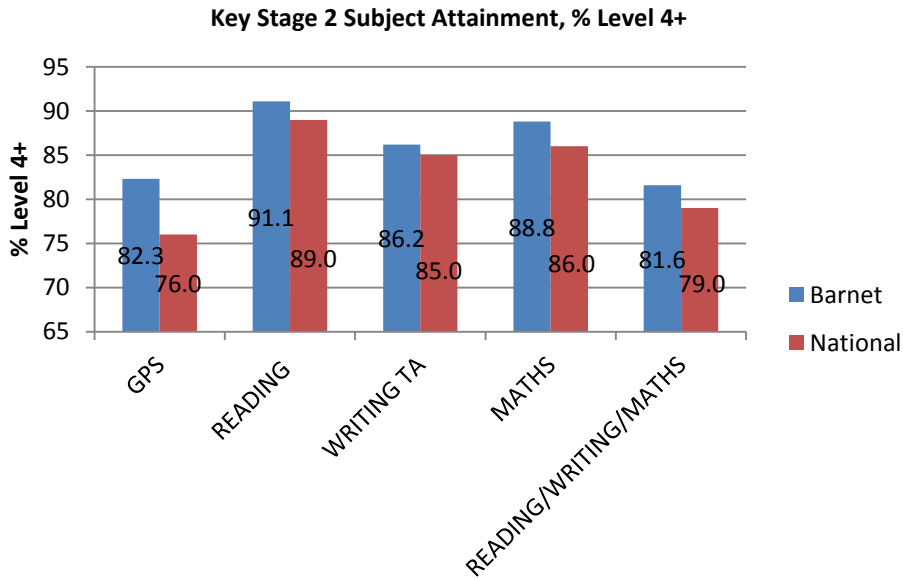
Writing: Attainment decreased by **0.1%**. National have caught us up. Need to focus on schools where KS1 Writing is an issue

Maths: 0.5% increase from 2013 (national 1.1%)

At Level 2+ boys underperform against girls for all KS1 subjects

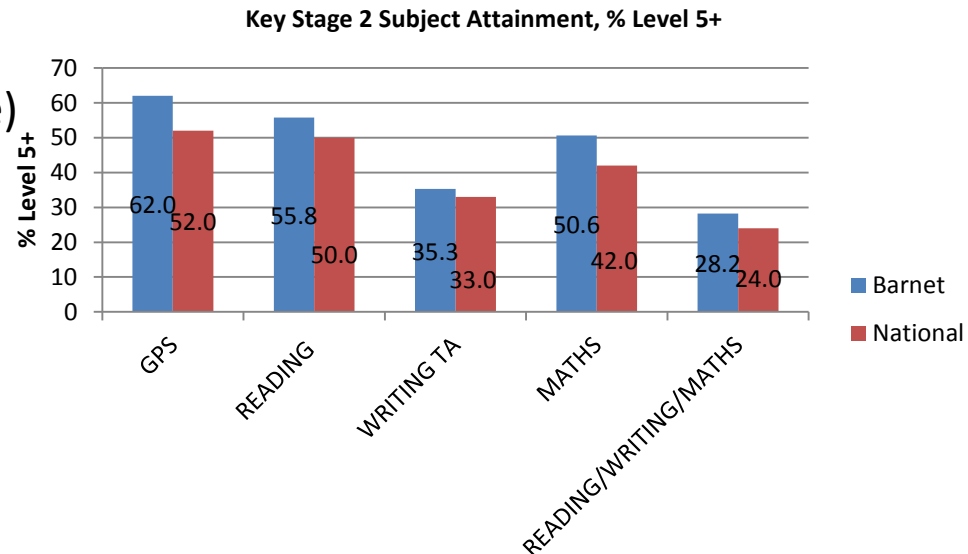
At Level 3+ boys outperform girls in Maths and Science

Key Stage 2: 2014 Attainment



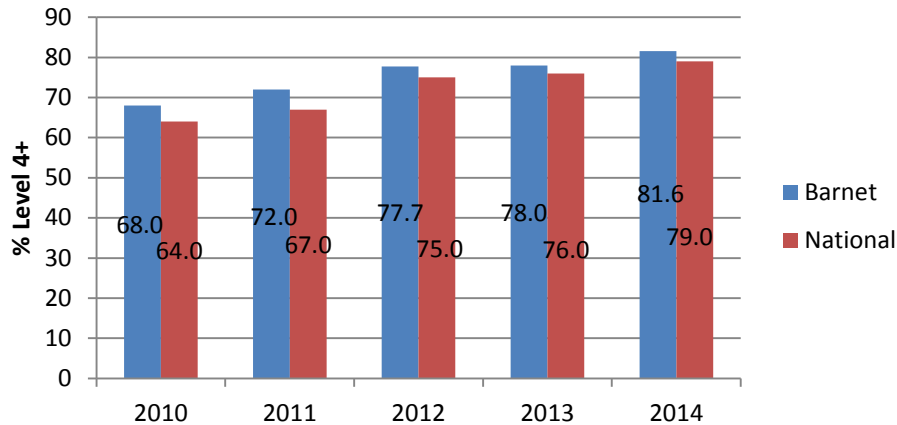
- **2.6%** above national in level 4+ RWM
- **82.3%** attain level 4+ in GPS (6.3% difference)
- **91.1%** attain level 4+ in Reading (2.1% difference)
- **86.2%** attain level 4+ in Writing (1.2% difference)

- **4.2%** above national in level 5+ RWM
- **62%** attain level 5+ in GPS (**10%** difference)
- **55.8%** attain level 5+ in Reading (**5.8%** difference)
- **35.3%** attain level 5+ in Writing (**2.3%** difference)
- **50.6%** attain level 5+ in Maths (**8.6%** difference)



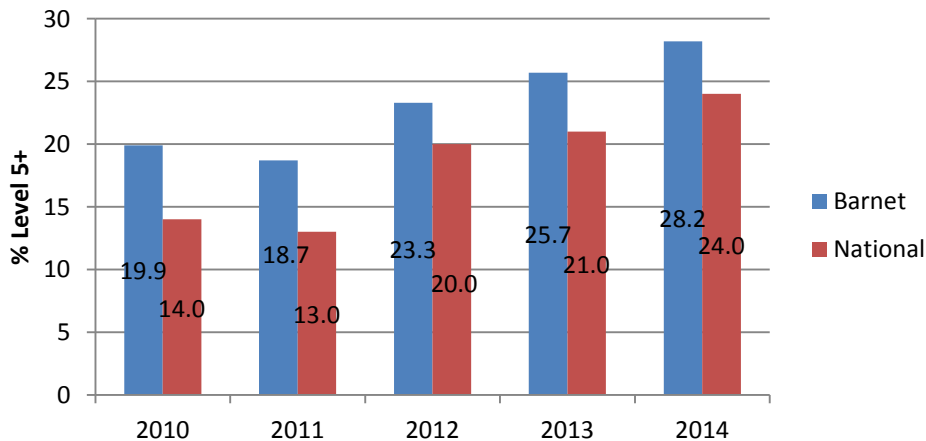
Key Stage 2 (Trends): RWM

KS2 RWM, Trend, Level 4+

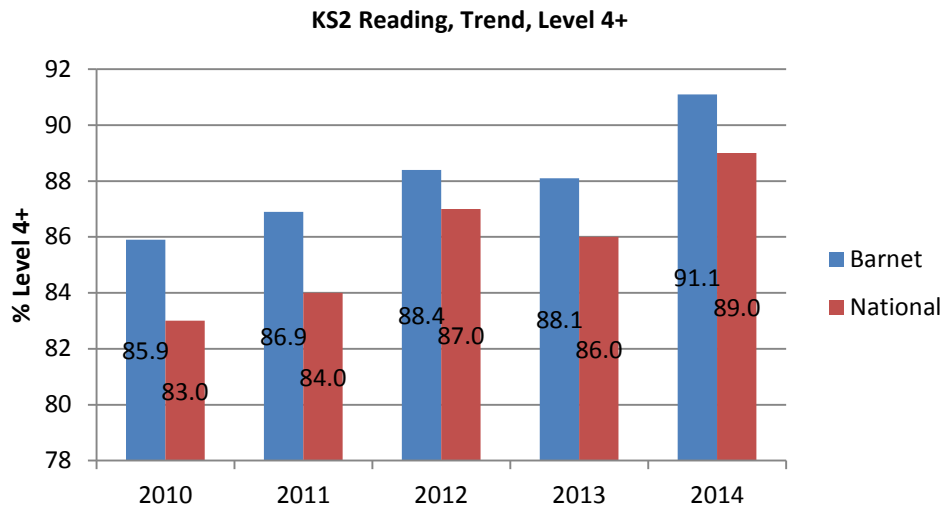


- **3.6%** increase in level 4+ from 2013 (national 3% increase)
- **2.5%** increase in level 5+ from 2013 (3% national increase)

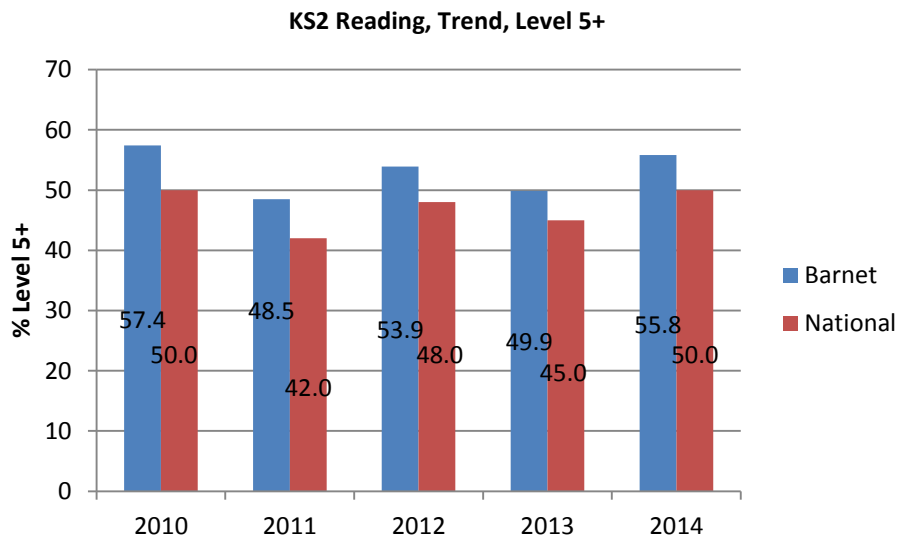
KS2 RWM, Trend, Level 5+



Key Stage 2 (Trends): Reading

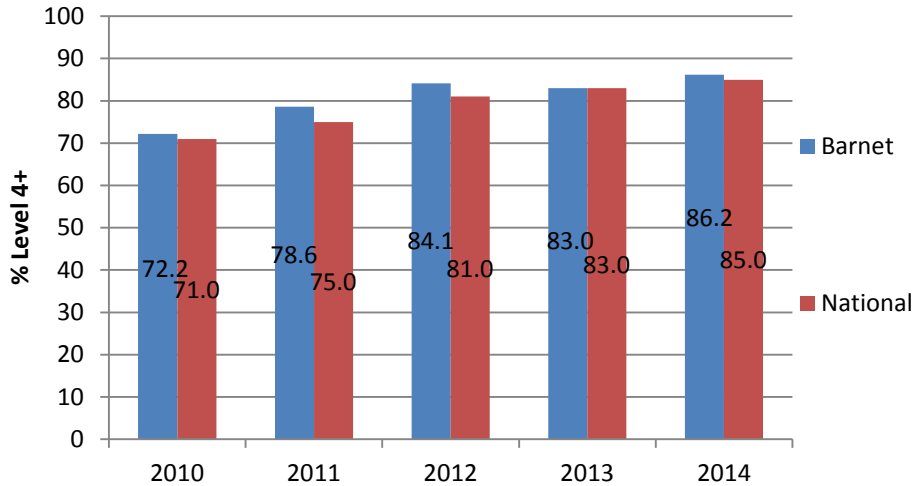


- **3%** increase in level 4+ attainment (3% national increase)
- **5.9%** increase in level 5+ attainment (5% national increase)



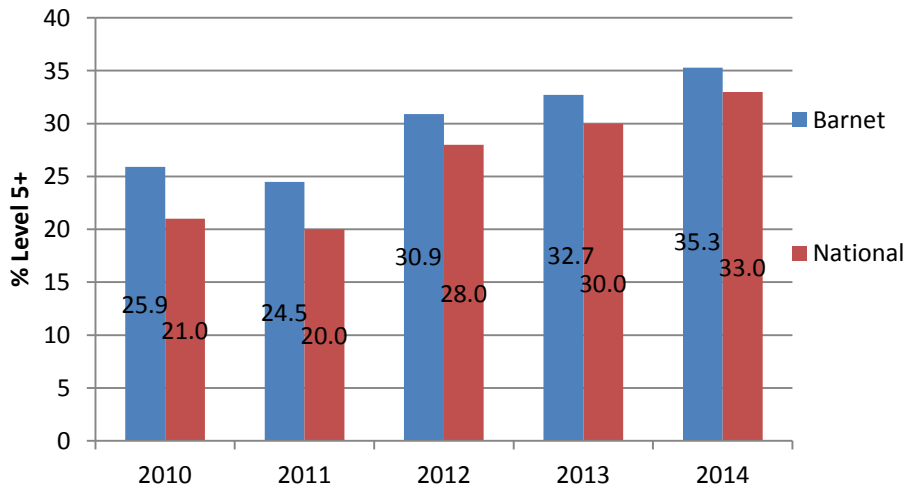
Key Stage 2 (Trends): Writing

KS2 Writing, Trend, Level 4+



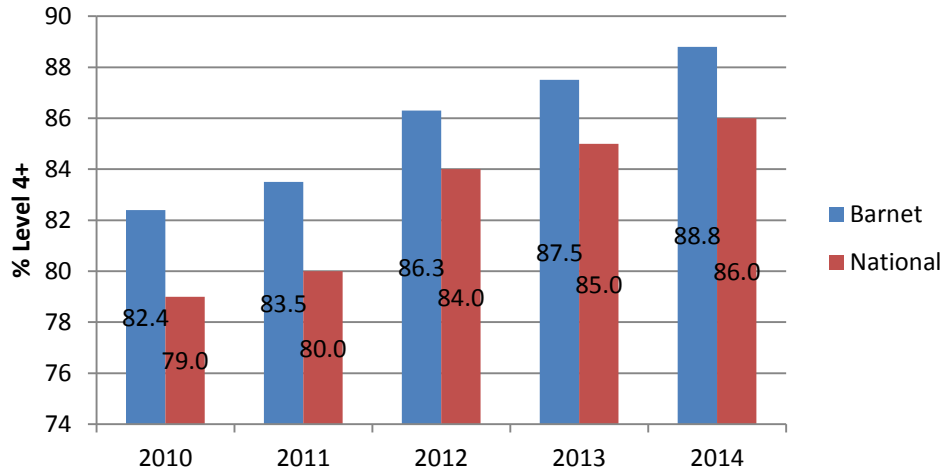
- **3.2%** increase in level 4+ Writing attainment (national 2% increase)
- **2.6%** increase in level 5+ Writing attainment (3% national increase)

KS2 Writing, Trend, Level 5+



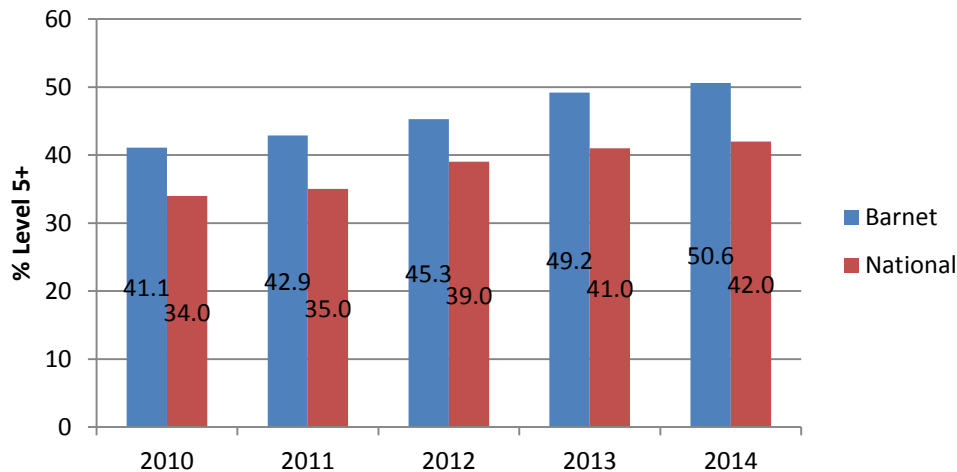
Key Stage 2 (Trends): Maths

KS2 Maths, Trend, Level 4+



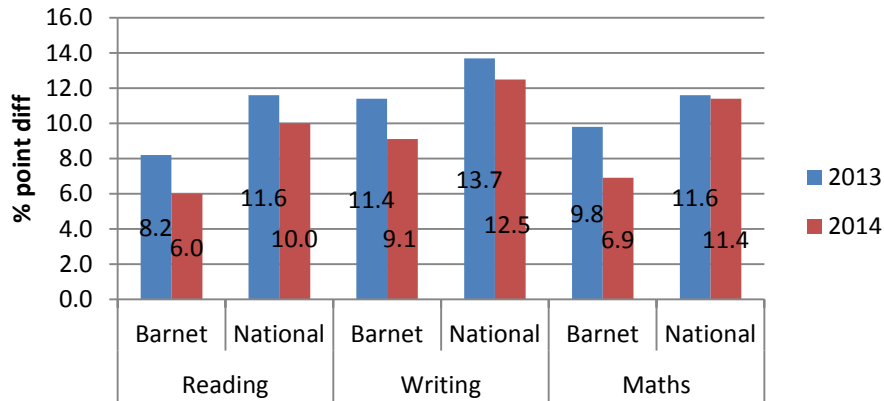
- **1.3%** increase in level 4+ attainment (national increase 1%)
- **1.4%** increase in level 5+ attainment (national increase 1%)

KS2 Maths, Trend, Level 5+

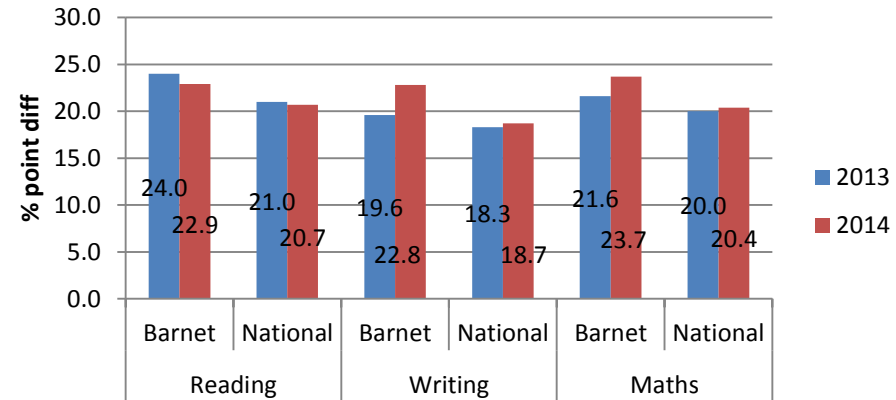


Narrowing the Gap

Attainment Gap (Non-FSM - FSM), % Level 4 or above



Attainment Gap (Non-FSM - FSM), % Level 5 or above



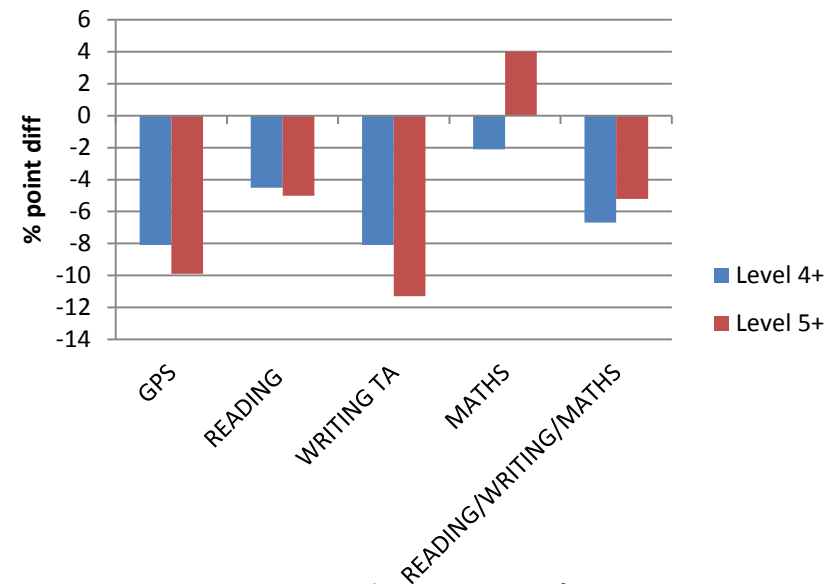
FSM:

- Level 4+ gap decreased for all subjects from 2013
- Level 4+ gap is smaller than national for all subjects
- Level 5+ gap increased by **3.2%** from 2013 in Writing and **2.1%** in Maths

Gender:

- Boys attain below girls in all subjects at Level 4+
- Boys attain above girls at Level 5+ in Maths, but not at level 4+
- **-11.3%** attainment gap in Writing (Level 5)
- Writing attainment gap increased the most from 2013

Attainment Difference, Barnet, 2014, (Boys – Girls)



Key Stage 2 Attainment Summary

Positives

3.6% increase in level 4+ RWM from 2013 (3% national increase)

3.2% increase in level 4+ Writing attainment (2% national increase)

5.9% increase in level 5+ Reading attainment (5% national increase)

1.3% increase in level 4+ Maths attainment (1% national increase)

1.4% increase in level 5+ Maths attainment (1% national increase)

Points to Note / Areas to improve

2.5% increase in level 5+ RWM from 2013 (3% national increase)

2.6% increase in level 5+ Writing attainment (3% national increase)

Despite the big improvement in Writing at level 4+ we are still only 41st out of 150 LAs so there is scope for further improvement

3% increase in level 4+ Reading attainment (3% national increase)

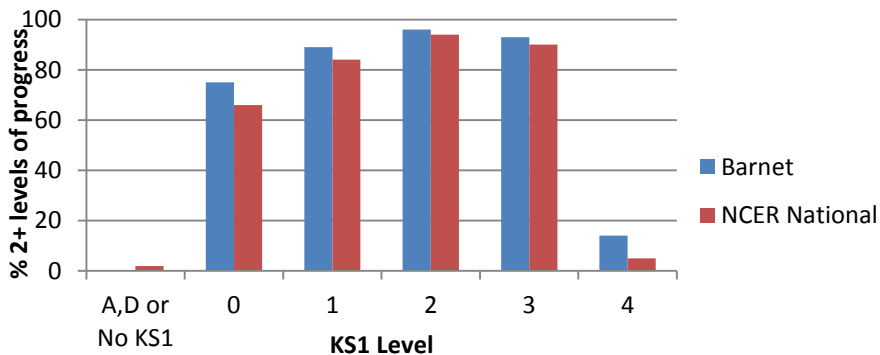
Progress Data: Reading

READING PROGRESS: Local Authority: Percentage of Pupils at each KS1 Level / KS2 Level

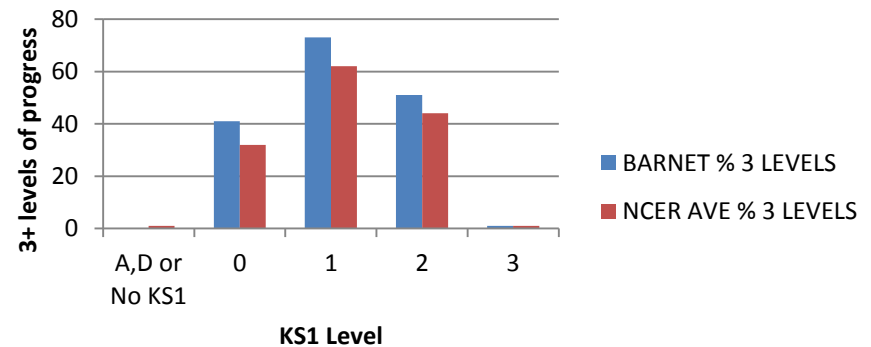
Level	Other	0	1	2	3	4	5	6	BARNET % 2 LEVELS	NCER AVE % 2 LEVELS	BARNET % 3 LEVELS	NCER AVE % 3 LEVELS
A,D or No KS1	1	1	3	12	9	36	37			2		1
0	1	11	13	34	9	27	5		75	66	41	32
1				10	16	55	18		89	84	73	62
2				1	4	45	51		96	94	51	44
3						7	92	1	93	90	1	1
4							86	14	14	5		
Total			1	3	4	35	56		93	91	39	34

- **93%** made expected progress (compared to 91% nationally, NCER)
- **39%** made exceeding progress (compared to 34% nationally)
- Pupils of all abilities made greater progress than nationally

KS2 Reading: Percentage of pupils at each KS1 Level Achieving at least Expected Progress



KS2 Reading: Percentage of pupils at each KS1 Level Achieving Exceeding Progress



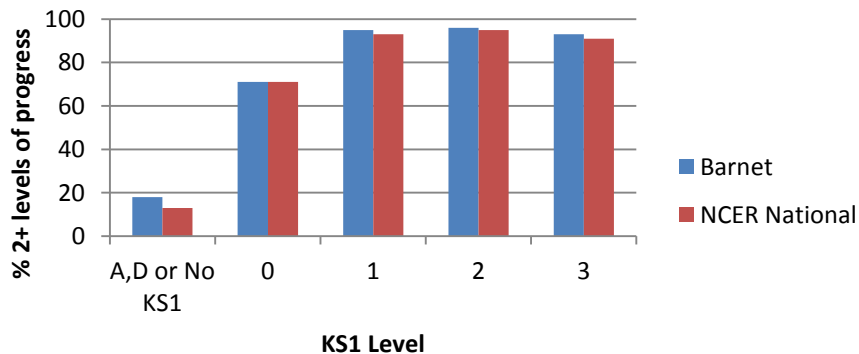
Progress Data: Writing

WRITING PROGRESS: Local Authority: Percentage of Pupils at each KS1 Level / KS2 Level

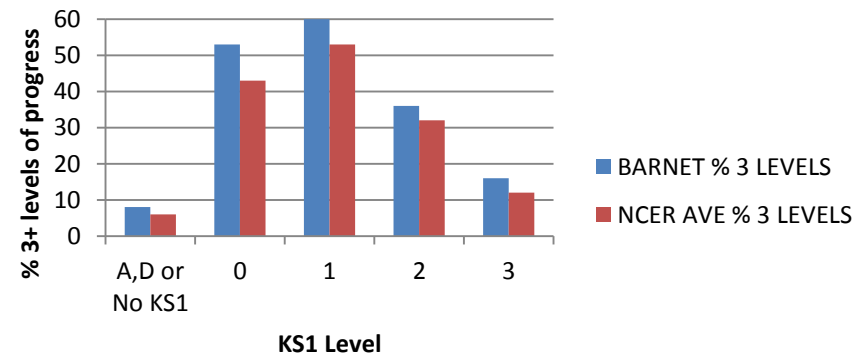
Level	Other	0	1	2	3	4	5	6	BARNET % 2 LEVELS	NCER AVE % 2 LEVELS	BARNET % 3 LEVELS	NCER AVE % 3 LEVELS
A,D or No KS1	1	1	3	10	19	49	15	1	18	13	8	6
0	2	10	17	18	38	15			71	71	53	43
1				5	35	58	2		95	93	60	53
2					4	59	35	1	96	95	36	32
3						7	77	16	93	91	16	12
4										56		
Total			1	2	10	50	33	3	94	93	37.00	33

- **94%** made expected progress (compared to 93% nationally, NCER)
- **37%** made exceeding progress (compared to 33% nationally)
- Pupils of all abilities made greater progress than nationally

KS2 Writing: Percentage of pupils at each KS1 Level Achieving at least Expected Progress



KS2 Writing: Percentage of pupils at each KS1 Level Achieving Exceeding Progress



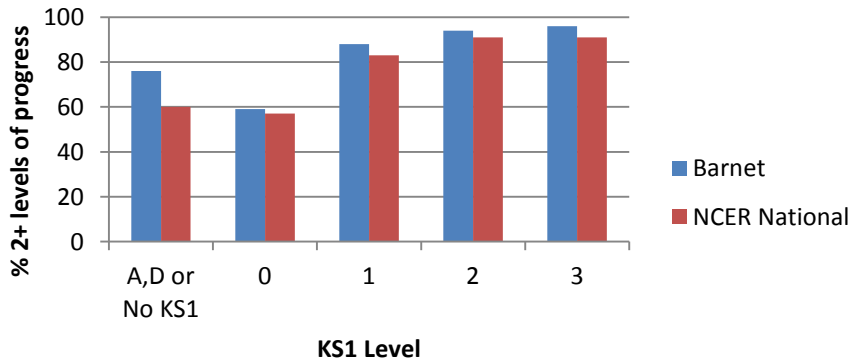
Progress Data: Mathematics

MATHS PROGRESS: Local Authority: Percentage of Pupils at each KS1 Level / KS2 Level

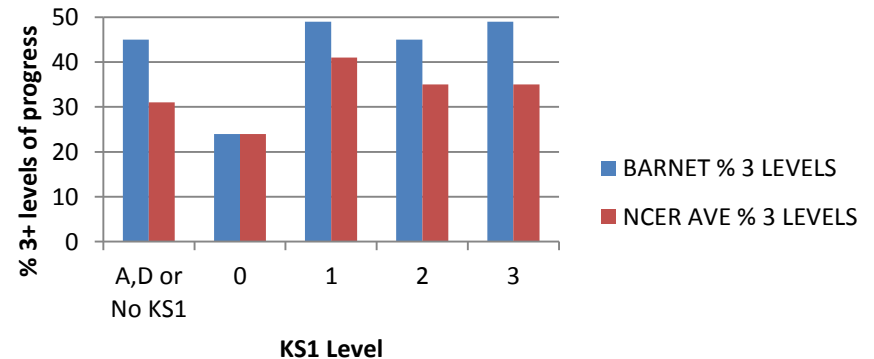
Level	Other	0	1	2	3	4	5	6	BARNET % 2 LEVELS	NCER AVE % 2 LEVELS	BARNET % 3 LEVELS	NCER AVE % 3 LEVELS
A,D or No KS1	1	1	1	8	13	35	32	9	76	60	45	31
0	3	14	24	36	12	12			59	57	24	24
1				11	39	44	6		88	83	49	41
2					5	50	40	4	94	91	45	35
3						4	47	49	96	91	49	35
4										96		
Total			1	2	7	38	38	14	93	90	46.00	35

- **93%** made expected progress (compared to 90% nationally, NCER)
- **46%** made exceeding progress (compared to 35% nationally)
- Pupils of all abilities made greater progress than nationally

KS2 Mathematics: Percentage of pupils at each KS1 Level
Achieving at least Expected Progress

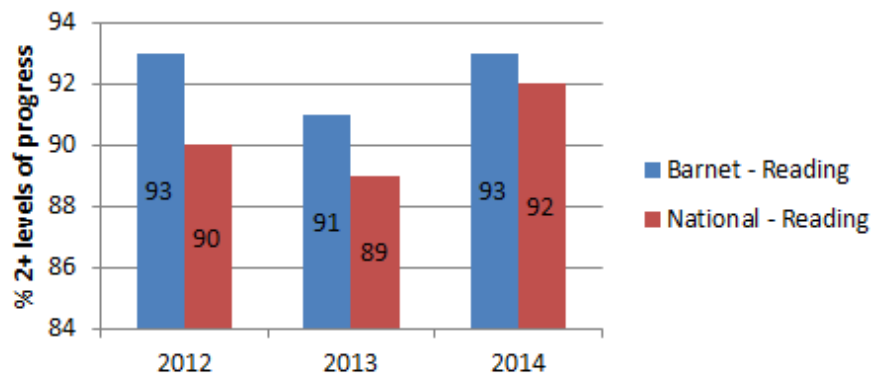


KS2 Mathematics: Percentage of pupils at each KS1 Level
Achieving Exceeding Progress

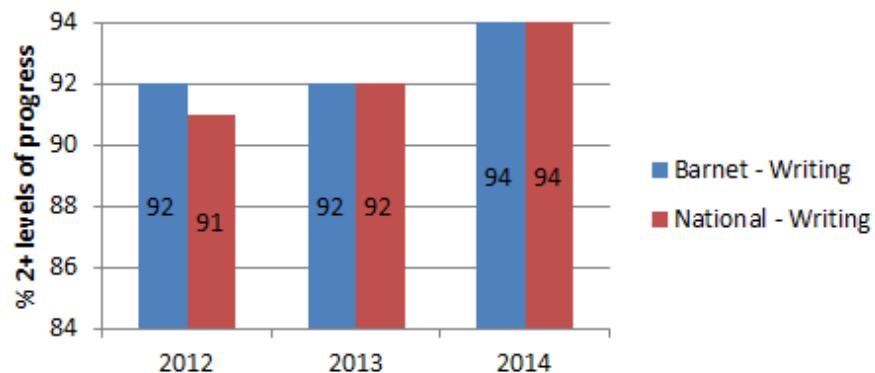


Progress Data: Trends

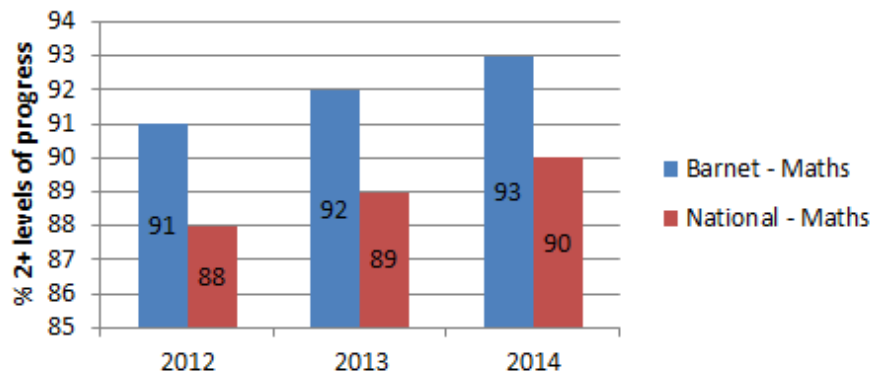
KS1 - KS2 Expected Progress: Reading, 2 Levels +



KS1 - KS2 Expected Progress: Writing, 2 Levels +



KS1 - KS2 Expected Progress: Mathematics, 2 Levels +



- The proportion of pupils achieving at least expected progress **increased for all KS2 subjects**
- **2%** increase in proportion of pupils achieving expected progress in Reading and Writing

Key Stage 2: Progress and Floor Standards

- NCER estimate of national median (2014) for expected progress places Barnet below the floor standard

Floor Standard Report

2014 Key stage 2

Gender=All Pupils;

DFE	LA	Y6 NOR	Small School (<11 Y6)	% Meeting Floor Standard				Number of Measures Failed	School meeting Floor Standard
				L4+ R/W & Maths (DFE Nat)	2 Levels of Progress Reading (NCER Nat)	2 Levels of Progress Writing (NCER Nat)	2 Levels of Progress Maths (NCER Nat)		
	National Threshold			65	93	96	92		
	Barnet	3497		82	93	94	93	1	Yes



Insufficient school data and therefore not counted



Floor Standards not met

National Floor Standards Thresholds are based on the national median, constructed from the school list in the publication file. N.B. special schools; schools with fewer than 11 pupils; closed schools; schools with missing data for one or more performance measure/s have been excluded from the calculation.

Please note that the denominators used to calculate the indicator columns may not be the NOR.

National medians are supplied by the DfE. Where national medians are not available for a reporting year, EPAS calculates proxy national medians and will show NCER instead of DfE. The proxy national medians may differ from the DfE medians when published.

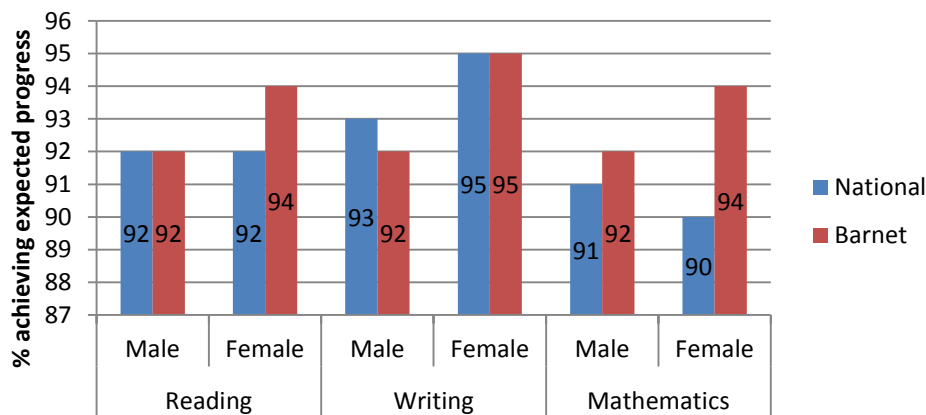
The KS2 attainment figures that appear in this report are calculated within EPAS and may not match equivalent data in other local systems. If you do not wish to use the EPAS attainment figures you should export the report and then replace the EPAS attainment figures with your own data.

Released: September 2014

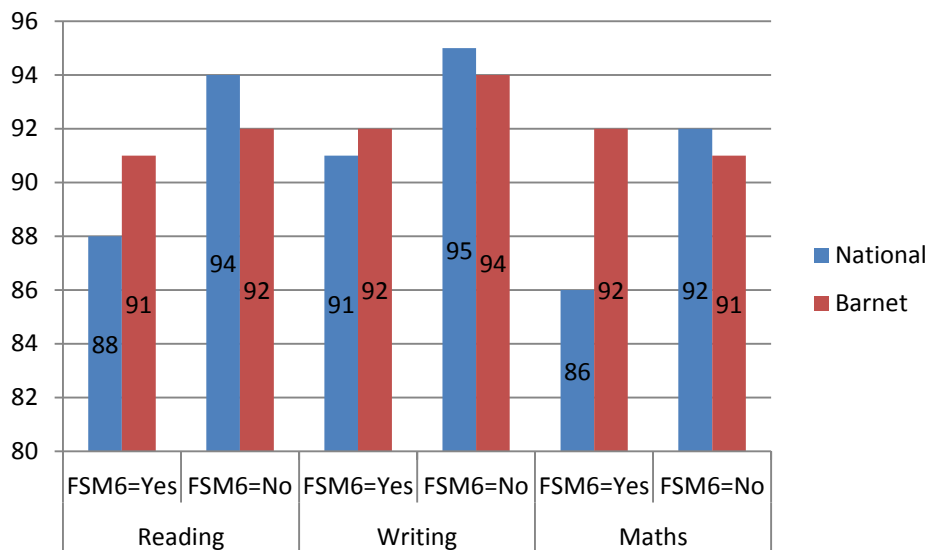
FLS201

Expected Progress by FSM6 Eligibility and Gender

Proportion of Pupils Achieving Expected Progress (2+ levels) by Gender, 2014



- In Barnet, males are less likely to make expected progress than females in all subjects
- The achievement gap between males and females is wider in Barnet than nationally for all subjects
- The achievement gap is widest between males and females in KS2 Writing (3% point difference)



- Expected progress for FSM6 students is above national for all subjects (**6% difference in Maths**)
- Expected progress for non-FSM6 students is below national (**2% difference in Reading**)

Key Stage 2: Progress

Positives

Barnet progress is better than national in all areas

The proportion of pupils achieving at least expected progress **increased for all** KS2 subjects

Expected progress for FSM6 students is above national for all subjects (**6%** difference in Maths)

Points to Note / Areas to improve

Expected progress for non-FSM6 students is just below national (**2%** difference in Reading)

Girls making better progress than boys in Barnet. Gender gap for progress wider in Barnet than nationally

Barnet Rankings, Key Stage 2

2013 RANKS		
Level 4+	National	London
RWM	27	14
Reading	15	10
Writing	59	25
GPS	9	6
Maths	9	8
<i>Total LAs*</i>	152	33

2014 RANKS		
Level 4+	National	London
RWM	17	11
Reading	12	7
Writing	41	18
GPS	8	7
Maths	11	10
<i>Total LAs*</i>	150	32

Level 5+	National	London
RWM	18	14
Reading	17	15
Writing	32	15
GPS	8	6
Maths	9	7
<i>Total LAs*</i>	152	33

Level 5+	National	London
RWM	17	10
Reading	11	6
Writing	35	15
GPS	8	7
Maths	9	6
<i>Total LAs*</i>	150	32

1% point increase would position Barnet as:

Progress	National	London
Reading	16	13
Writing	65	28
Maths	15	10
<i>Total LAs*</i>	152	33

Progress	National	London	National	London
Reading	18	14	6	6
Writing	40	22	16	13
Maths	9	7	2	2
<i>Total LAs*</i>	150	32		

* Excluding those suppressed due to small sizes

	Better rank than 2013
	Rank 1 below 2013
	Lower rank than 2013

Primary Schools

Successes

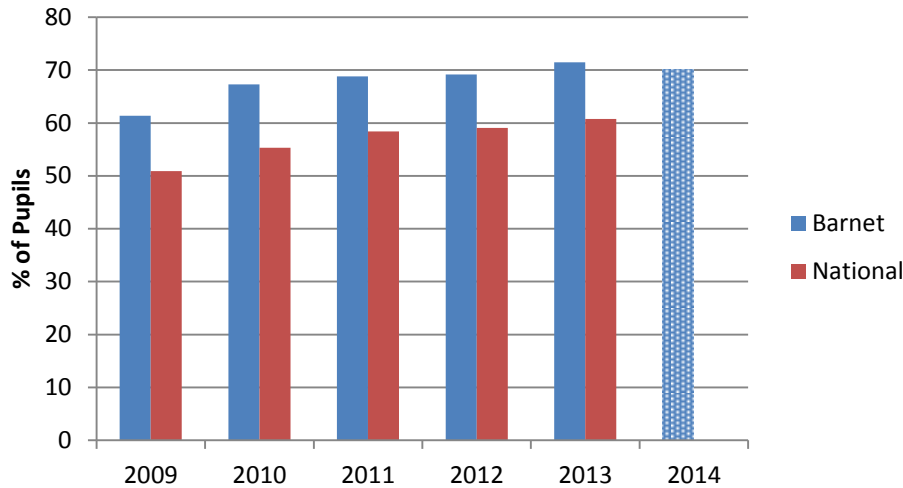
1. Improvements at all Key Stages in all areas
2. Improvement in Writing particularly pleasing
3. Narrowed the FSM/Non FSM Gap
4. Improved in our rankings nationally and in London in a lot of areas

Key Development Areas

1. Continue to narrow the gaps – focus on under achievement of boys and certain ethnic groups as well as FSM
2. Continue improvements in all areas - national catching us up in EYFS, Year 1 phonics and Year 2. Aim to be in top 10% nationally
3. Continue focus on Writing

Key Stage 4

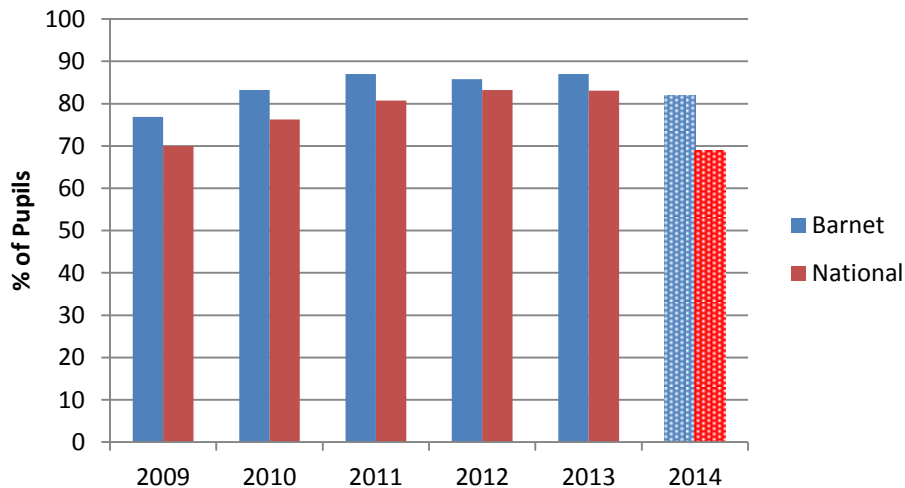
% 5 A*-C Grades including English and Maths



Provisional results collated from all Secondary Schools (excluding PRUs) indicate in 2014:

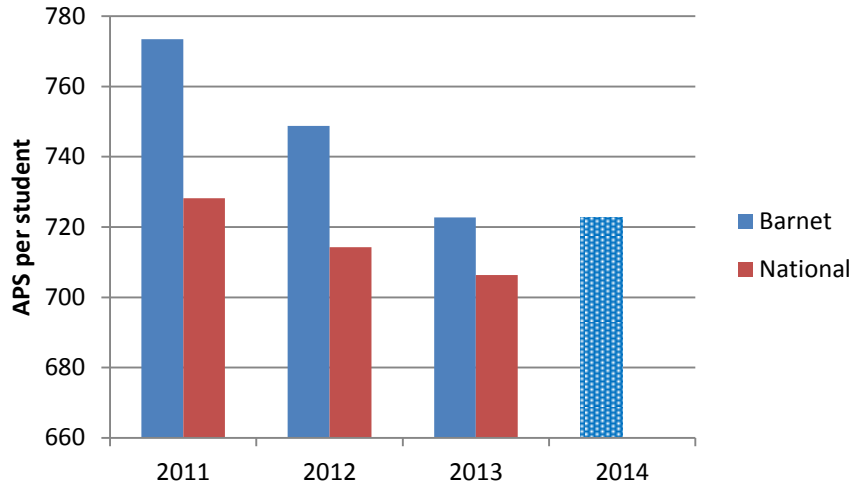
- **70.1%** 5 A*-C including English and Maths
- **81.9%** 5 A*-C
- Barnet 5 A*-C grades is **13.1%** points above national

% 5 A*-C Grades



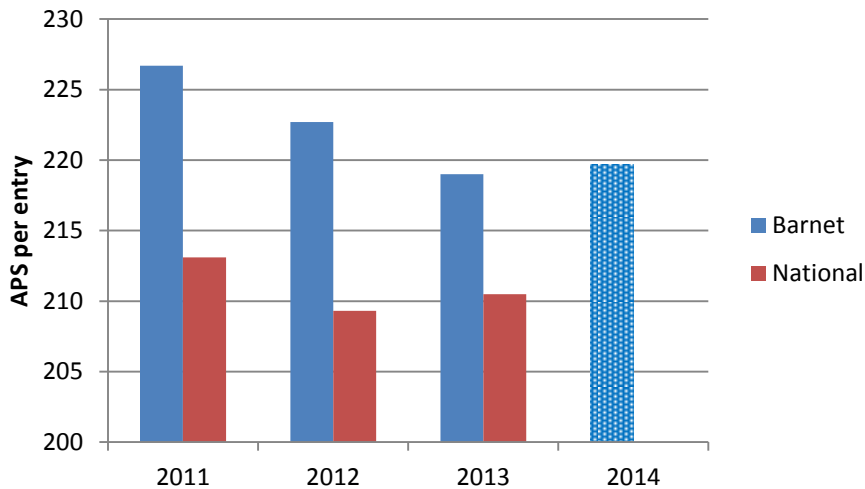
Key Stage 5

APS per Student (Year 13/14)



Based on provisional results from schools, **APS per student** and **APS per entry** both increased on last year

APS per Entry (Year 13/14)



Proportion of A Level Entries at Each Grade 2014

