

Barnet Virtual School

Data Dashboard 2014

The Virtual School Dashboard

Ofsted has produced a data dashboard for every school in England. It provides information about the context of the school, attainment and progress.

This presentation is a data dashboard for Barnet's virtual school which is attended by children in the care of Barnet Local Authority. It is a work in progress!



School Data Dashboard

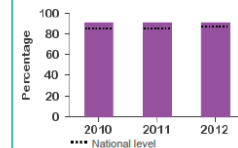
Key Stage 1

How are pupils doing in assessments? (Attainment)

Reading

In 2012, 90% of pupils attained Level 2 or above in the Key Stage 1 reading assessment. This has not changed since 2011.

Percentage of pupils who attained Level 2 or above in the Key Stage 1 reading assessment



In 2012, the school was in the middle 20% of all schools.

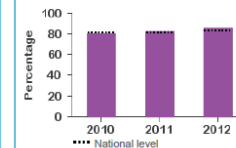
Comparison with other schools

All schools	
Highest	
2nd quintile	
3rd quintile	
4th quintile	
Lowest	

Writing

In 2012, 85% of pupils attained Level 2 or above in the Key Stage 1 writing assessment. This is an increase of three percentage points since 2011.

Percentage of pupils who attained Level 2 or above in the Key Stage 1 writing assessment



In 2012, the school was in the middle 20% of all schools.

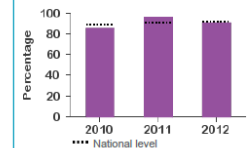
Comparison with other schools

All schools	
Highest	
2nd quintile	
3rd quintile	
4th quintile	
Lowest	

Mathematics

In 2012, 90% of pupils attained Level 2 or above in the Key Stage 1 mathematics assessment. This is a decrease of six percentage points since 2011.

Percentage of pupils who attained Level 2 or above in the Key Stage 1 mathematics assessment



In 2012, the school was in the bottom 40% of all schools.

Comparison with other schools

All schools	
Highest	
2nd quintile	
3rd quintile	
4th quintile	
Lowest	

Context

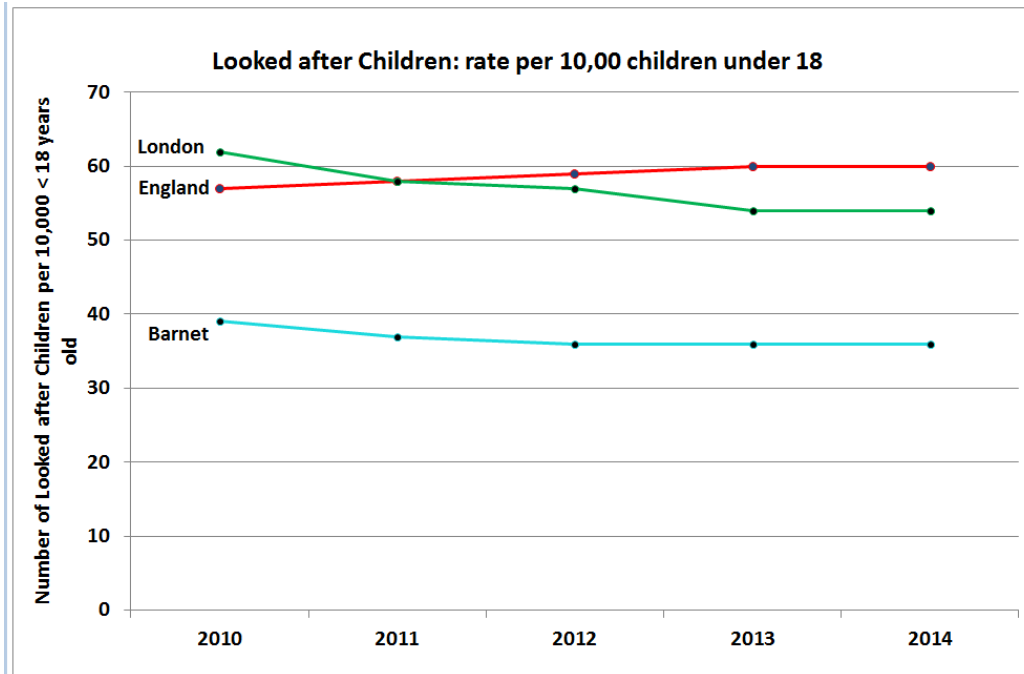
All the data on this dashboard relates to children who were in the care of Barnet LA for at least one year at March 31 of the year to which the data refers.

Please note

Data relating to Children in Care is volatile – numbers can and do change daily.

CiC performance data deals with small numbers of children and should be treated with caution, especially when making year-on-year comparisons.

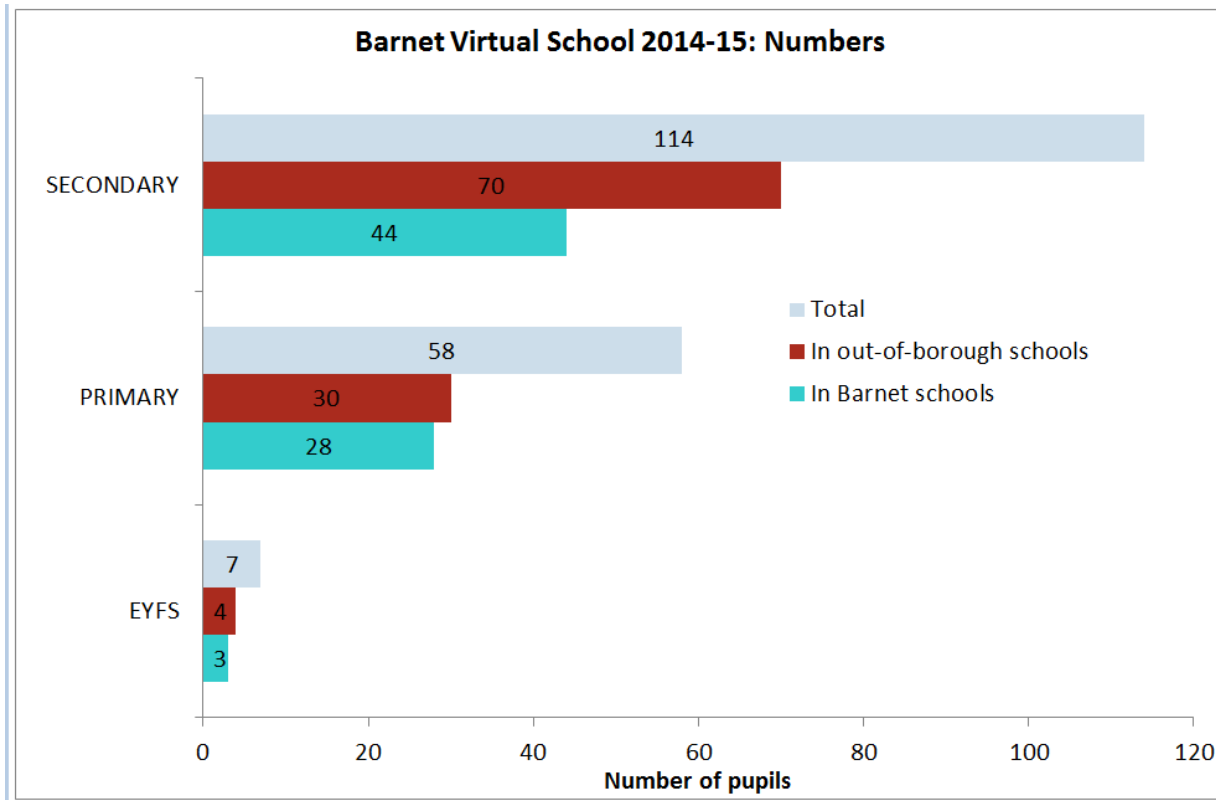
Children in Care: numbers and rates



Barnet CiC rates are below those of London and England and have been more-or-less stable for the past three years

Number of children in under 18 in care					
	2010	2011	2012	2013	2014
England	64470	65500	67070	68060	68840
London	10970	10410	10270	10080	10110
Barnet	310	300	300	305	310
Rate per 10,000 children under 18 in care					
	2010	2011	2012	2013	2014
England	57	58	59	60	60
London	62	58	57	54	54
Barnet	39	37	36	36	36

Where Barnet CiC are educated: 2014- 2015



179 School age CiC

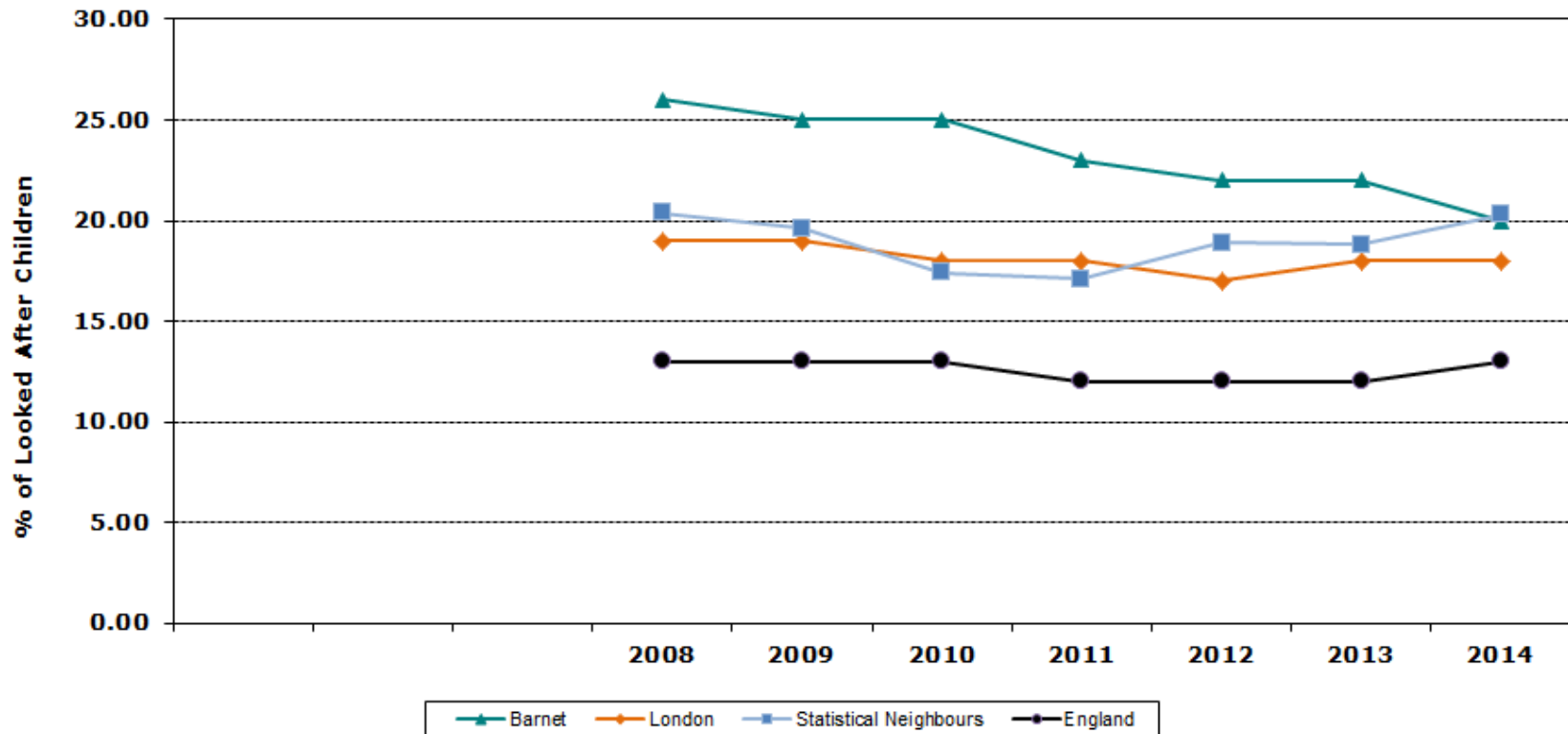
114 Secondary age CiC

65 Primary age CiC inc EYFS

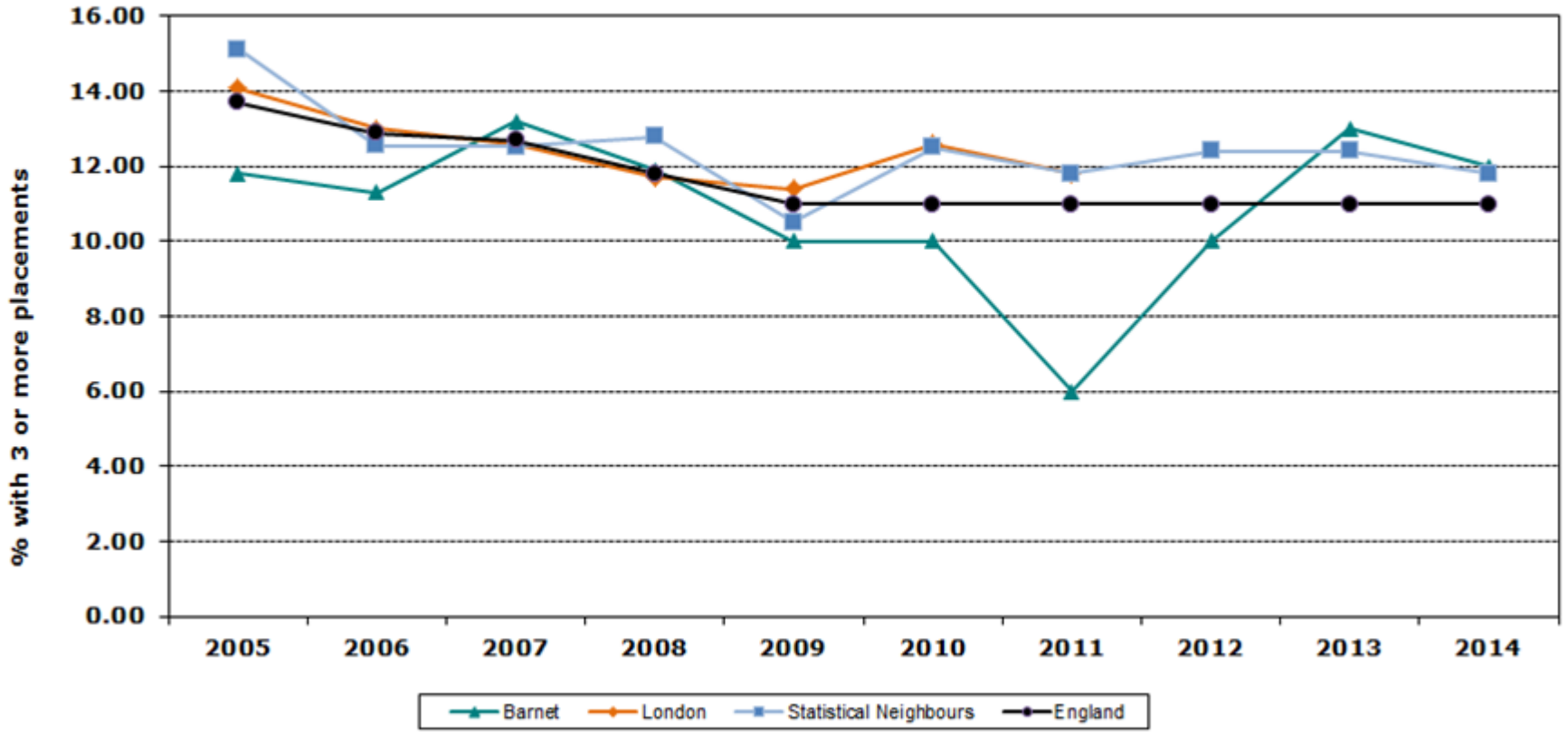
75 School age CiC placed in Barnet Schools.

104 School age CiC placed in Out of Borough Schools.

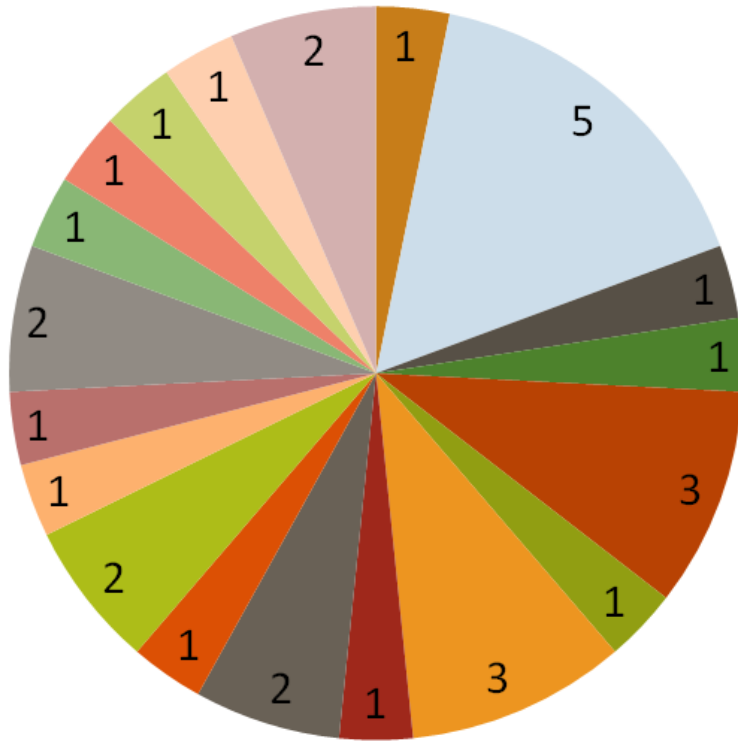
% of children looked after at 31 March, placed more than 20 miles from their homes, outside LA boundary



% of children at 31 March with three or more placements during the year

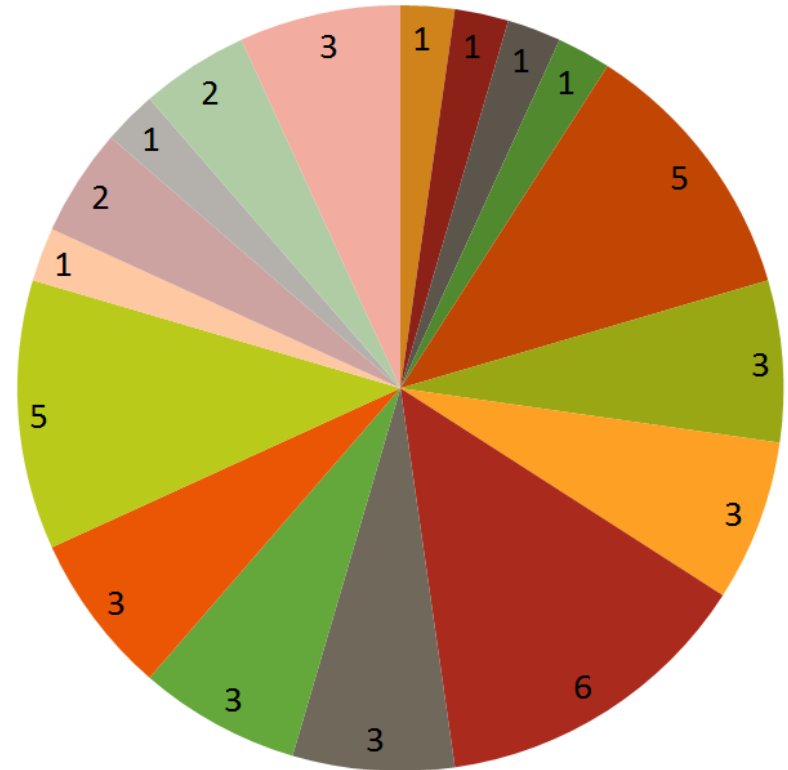


CiC: Barnet Primary Schools 2014 2015



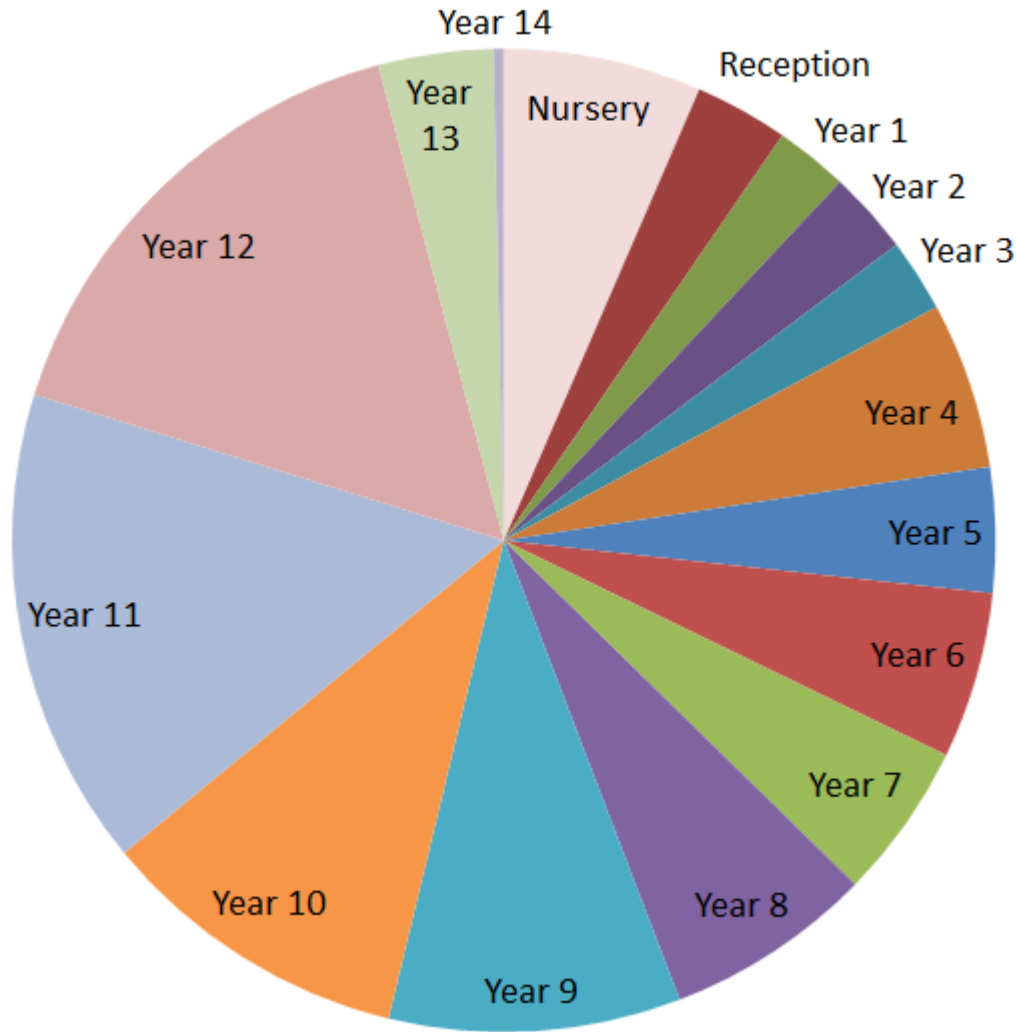
CiC in 19 Barnet primary schools

CiC: Barnet Secondary Schools 2014-15

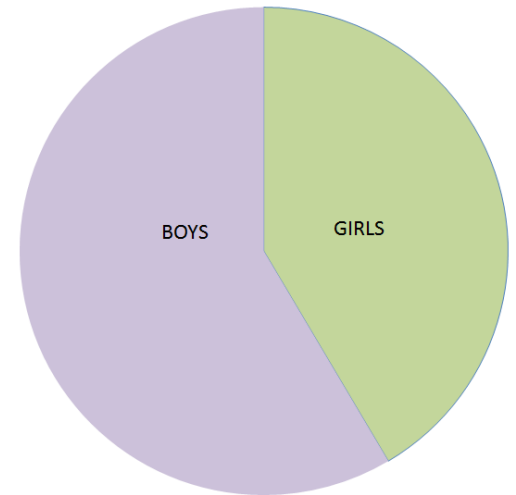


CiC in 17 Barnet secondary schools and settings

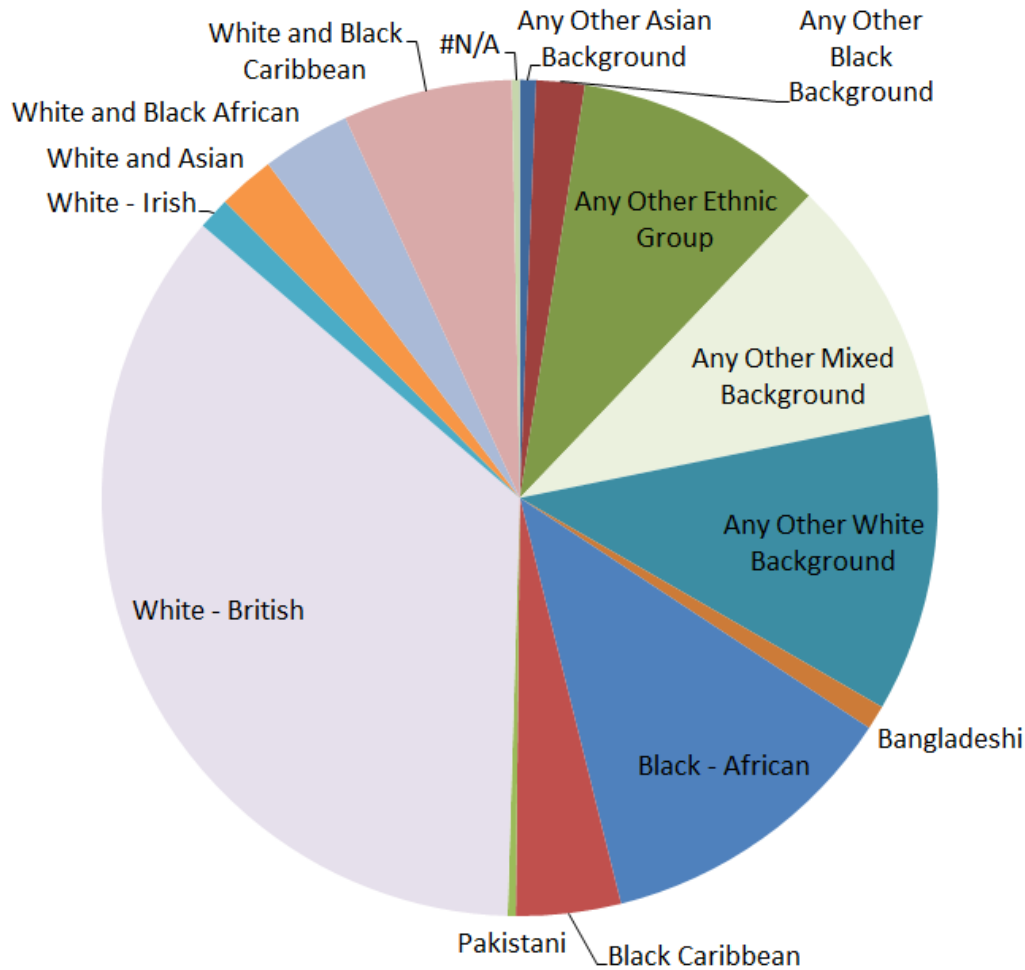
Barnet Virtual School 2014-15



There are more secondary age CiC than primary CiC – and more boys than girls on roll.

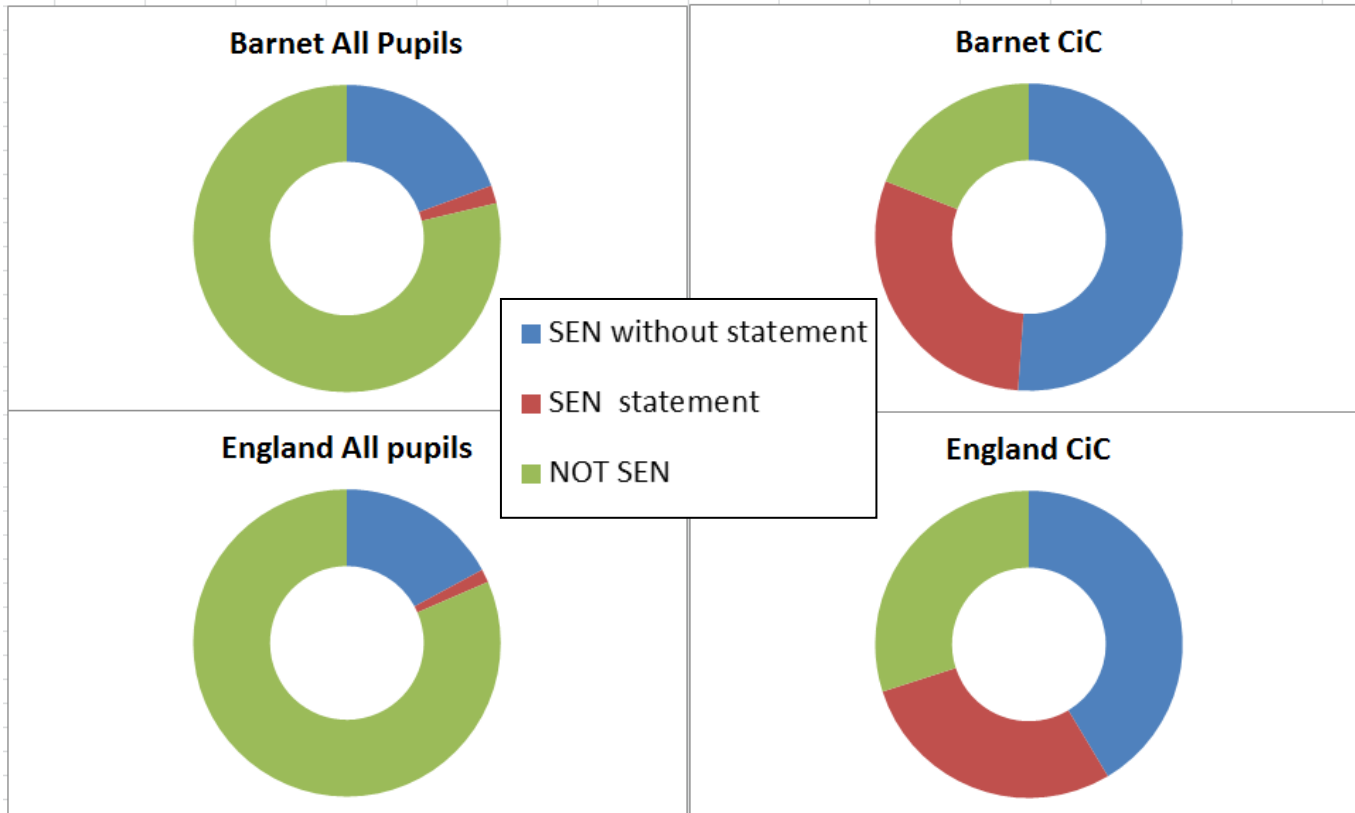


Ethnicity



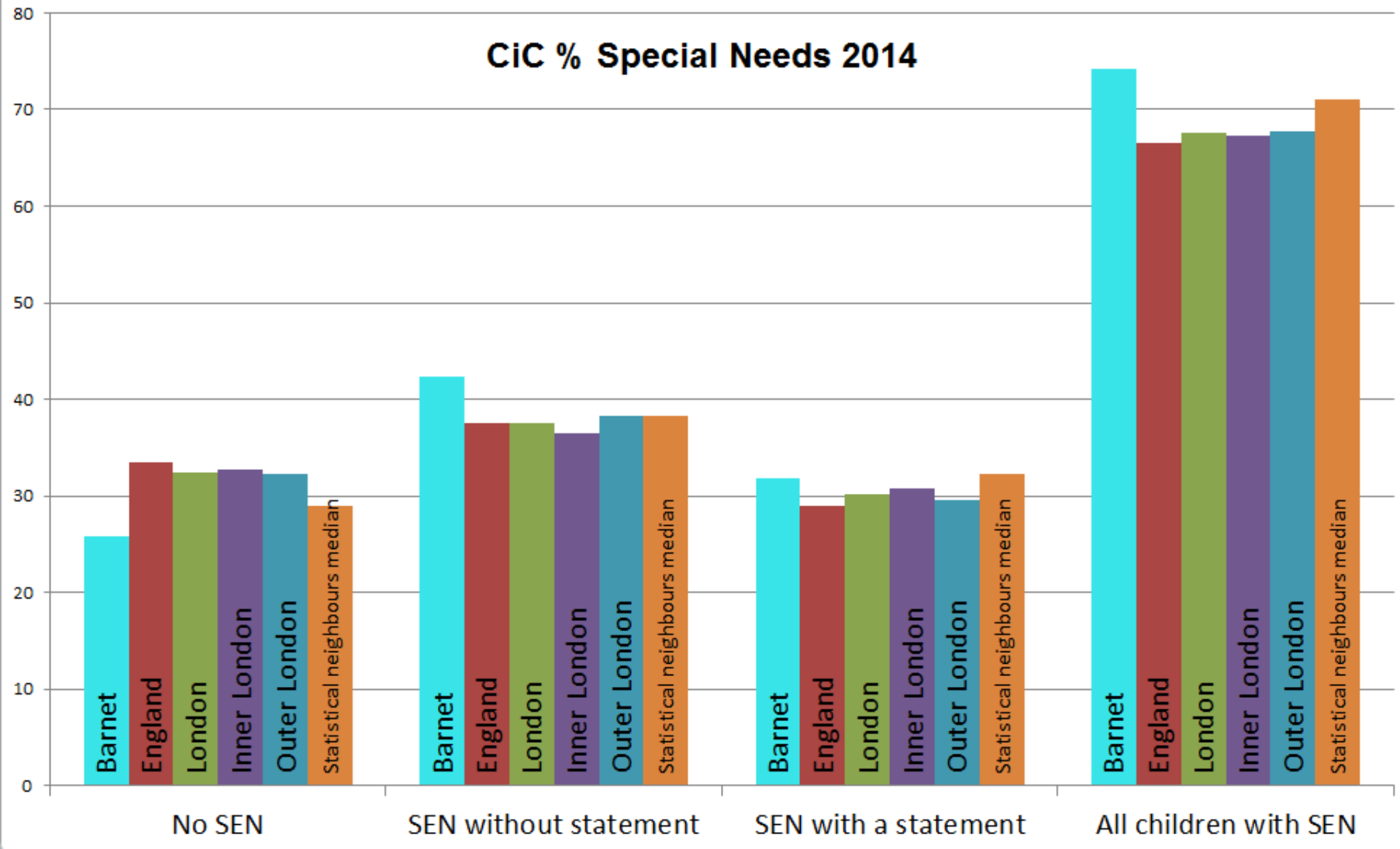
Barnet Virtual School
Pupils on roll
2014-2015

Special Educational Needs 2014



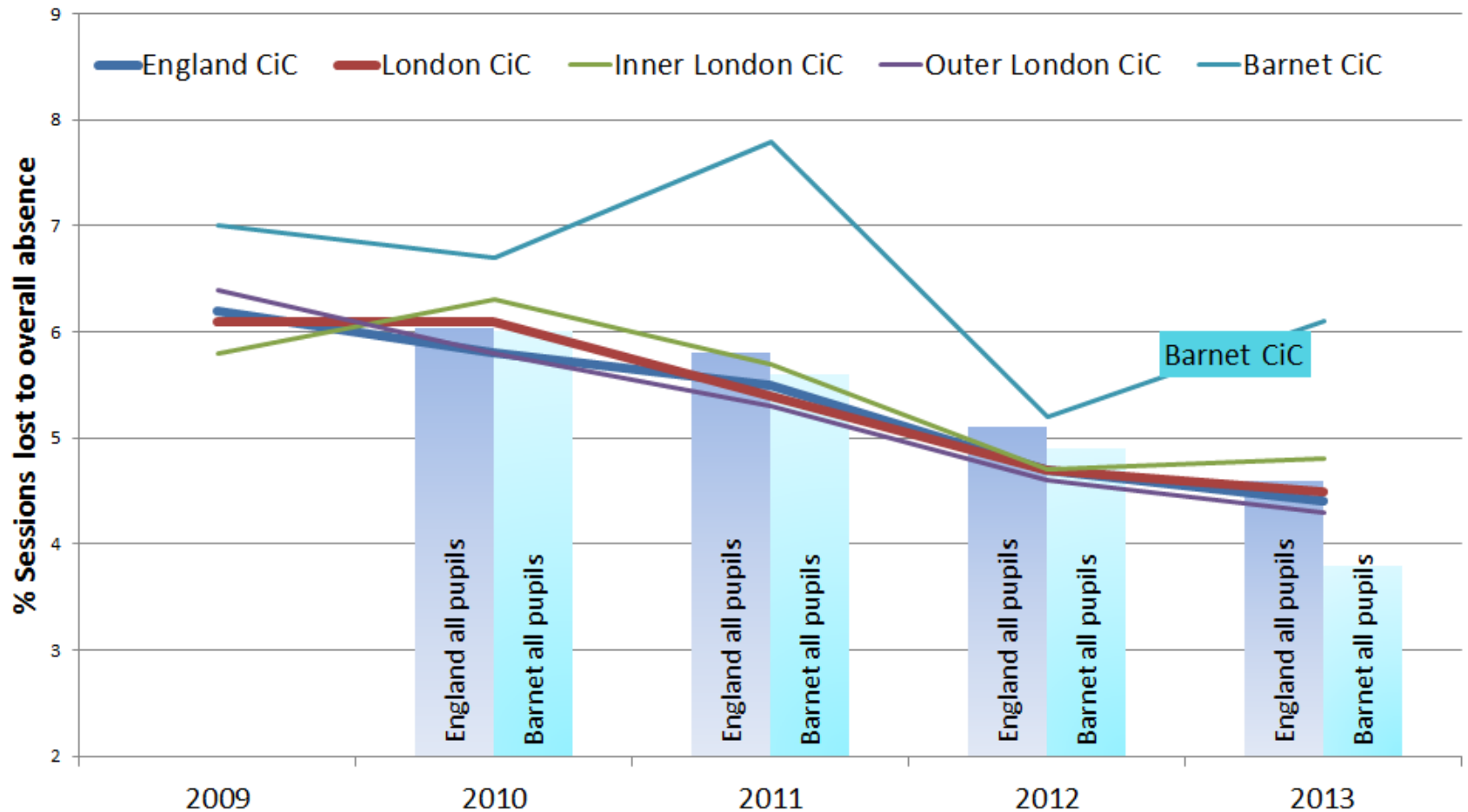
SEN rates for Barnet CiC are **MUCH** higher than for Barnet pupils generally. . SEN rates for Barnet CiC are higher than for CiC in England as a whole.

CiC % Special Needs 2014

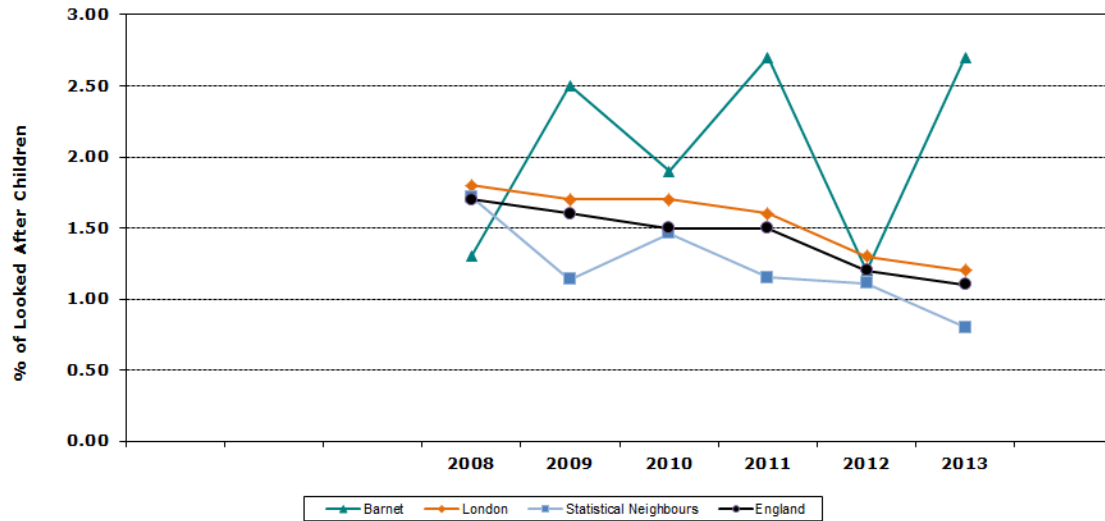


Attendance

CiC: % sessions lost to overall absence: all pupils



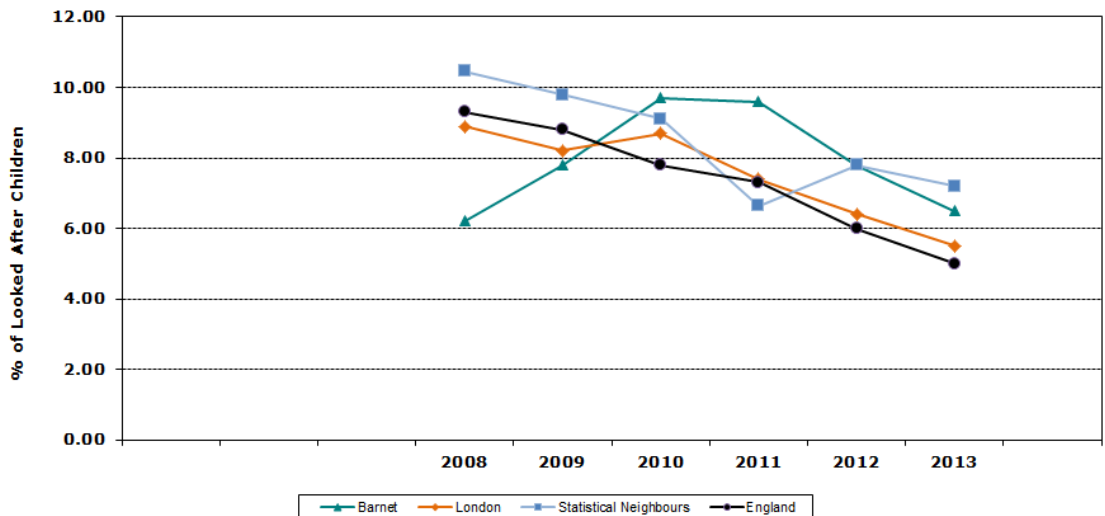
% unauthorised absence from school of children who have been looked after continuously for at least 12 months



Reducing absence and exclusion is a major focus for the Virtual School.

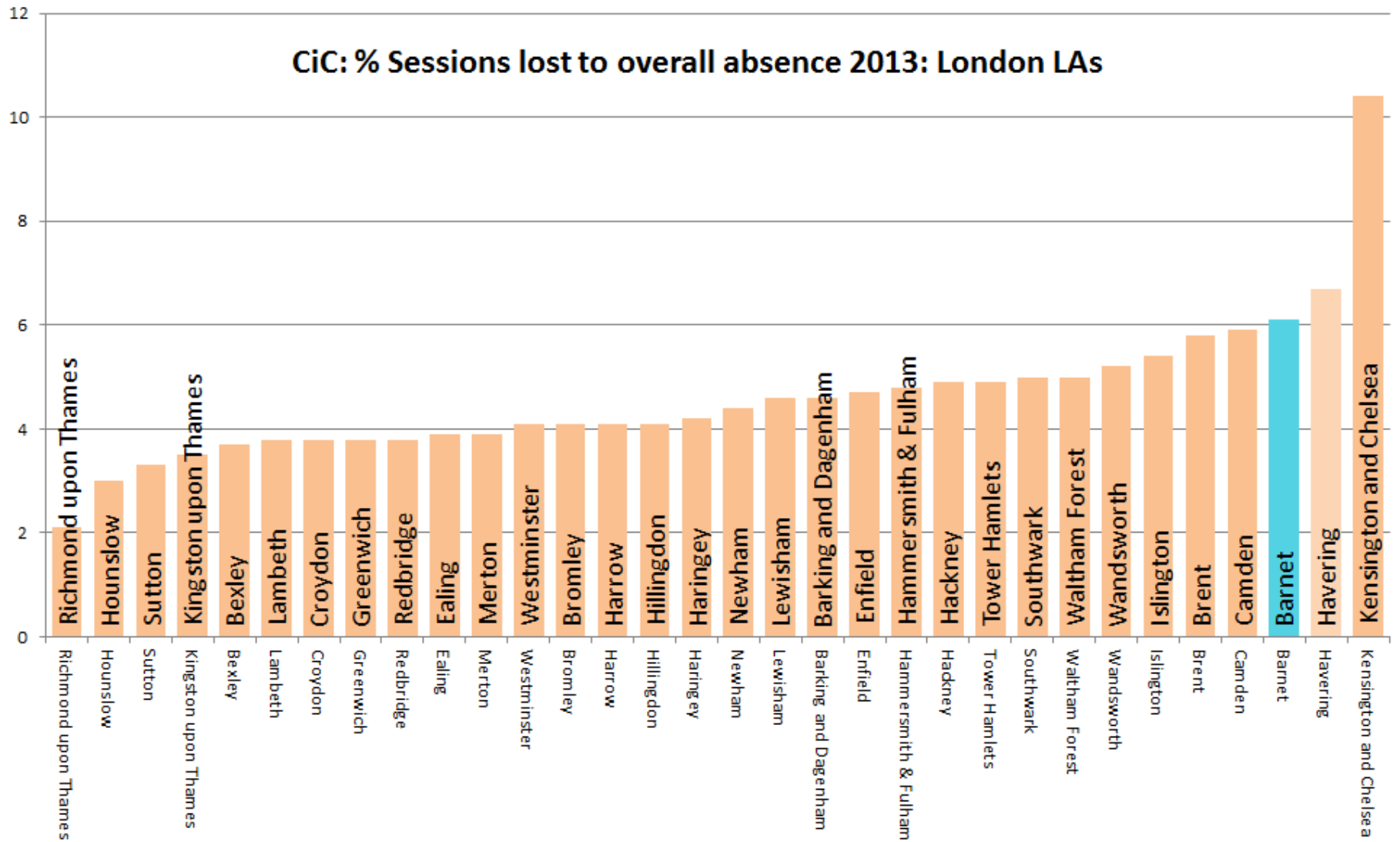
High exclusion rates have a significant impact on attendance rates.

% of children looked after who are classed as persistent absentees

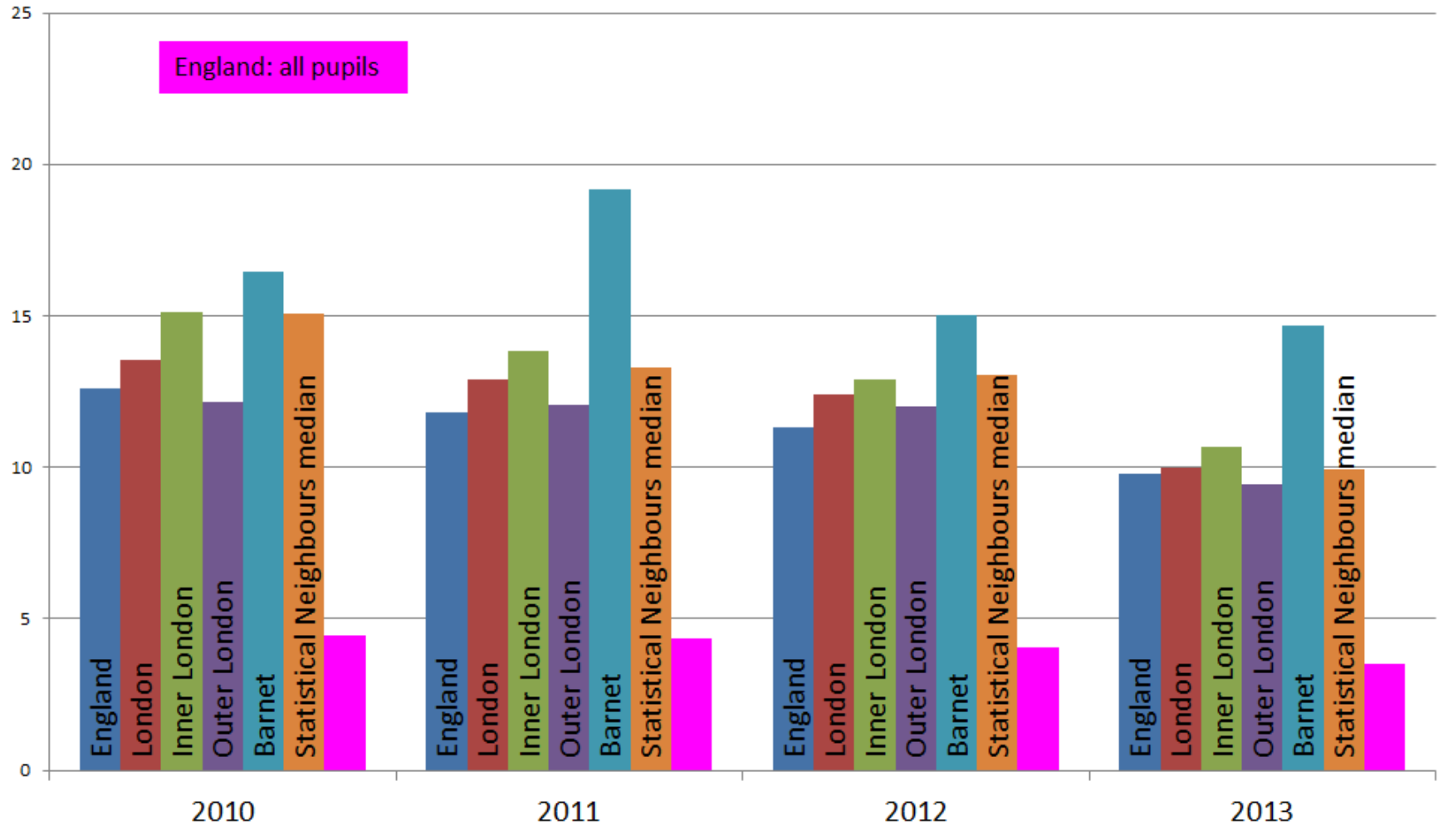


Although persistent absence has fallen in Barnet, rates remain higher than in London and nationally.

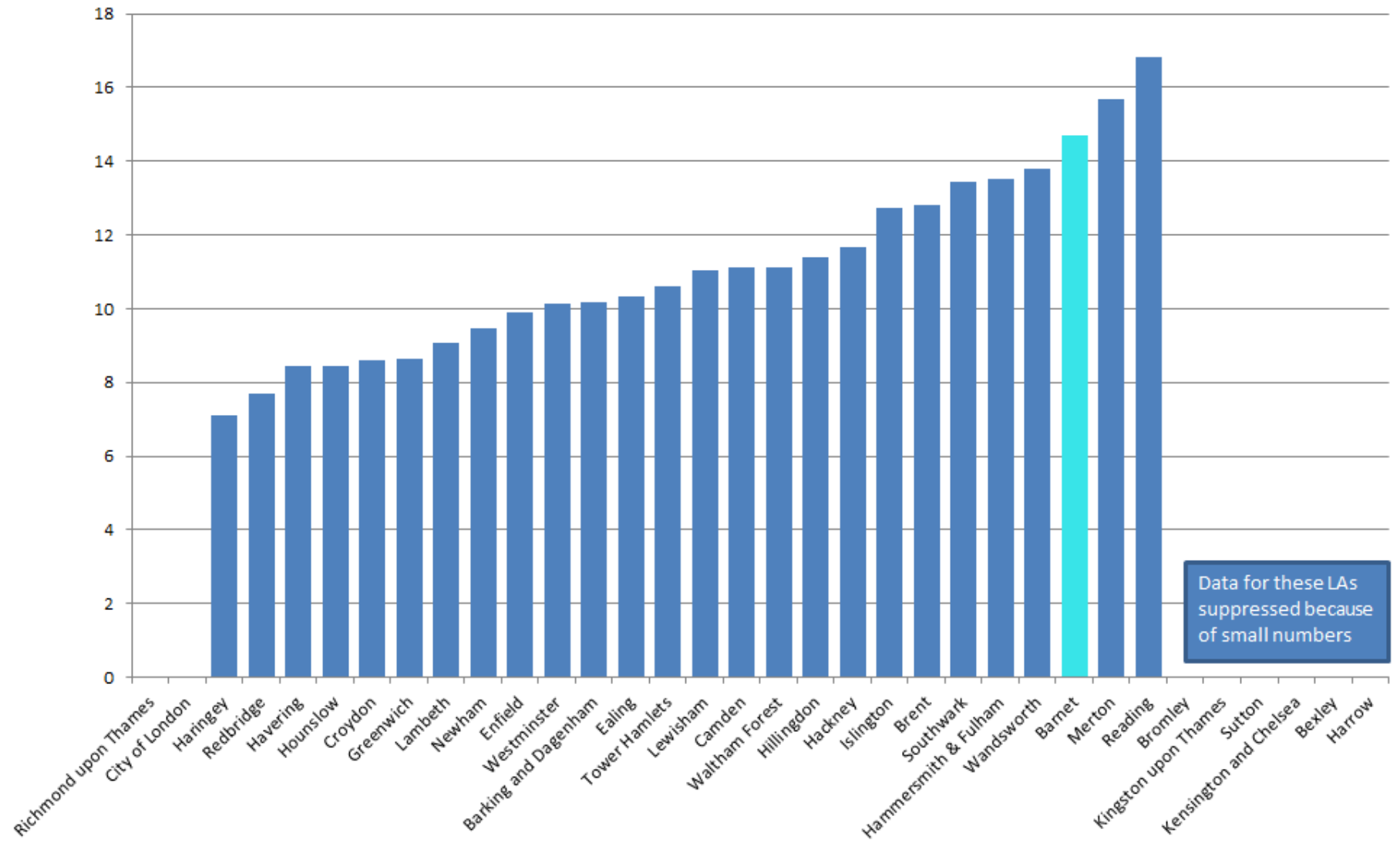
CiC: % Sessions lost to overall absence 2013: London LAs



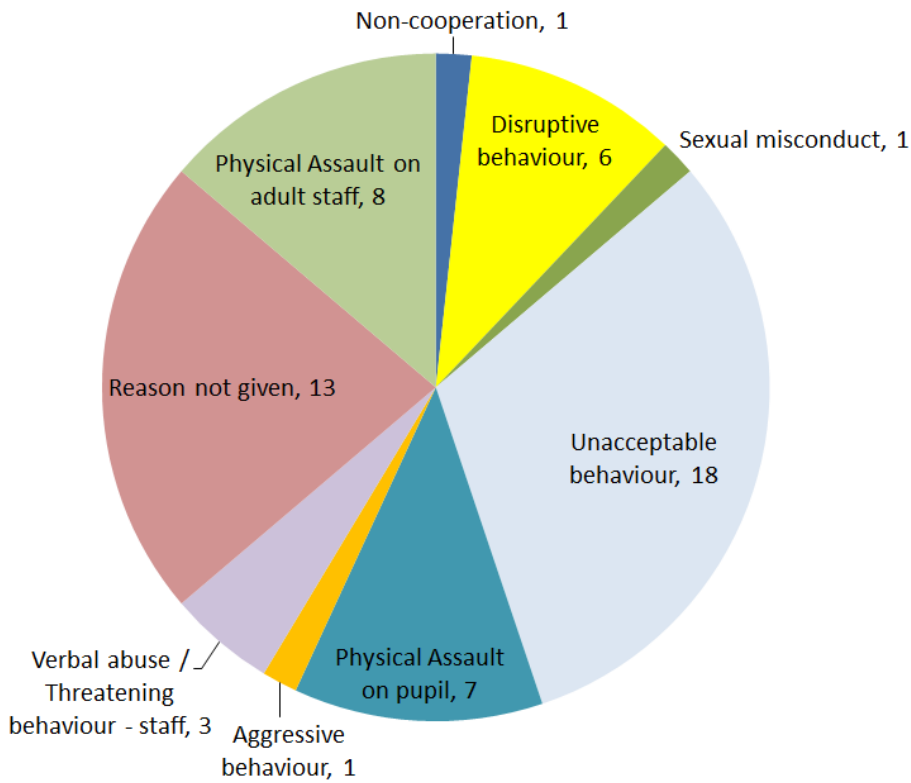
Percentage of children in care with at least one fixed exclusion



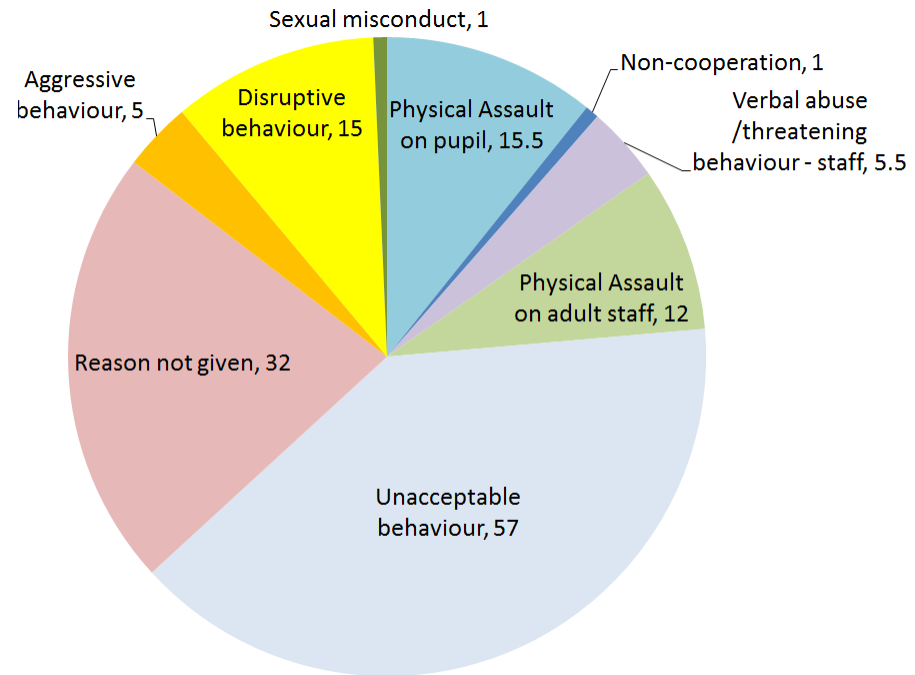
% CiC with at least 1 fixed exclusion: London LAs 2013



Data for these LAs suppressed because of small numbers

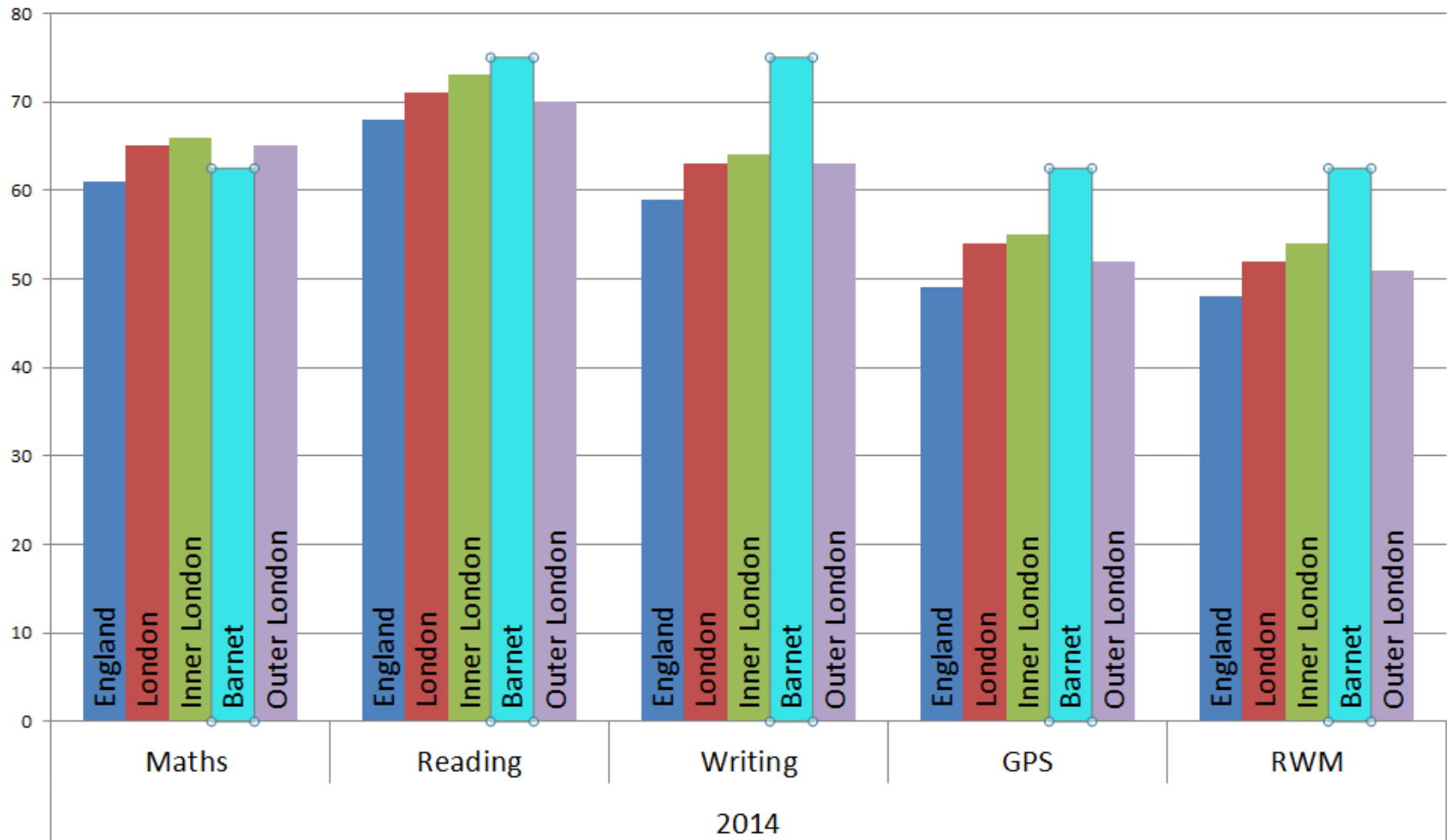


**Days lost to fixed-term exclusions
September 2013 - May 2014**



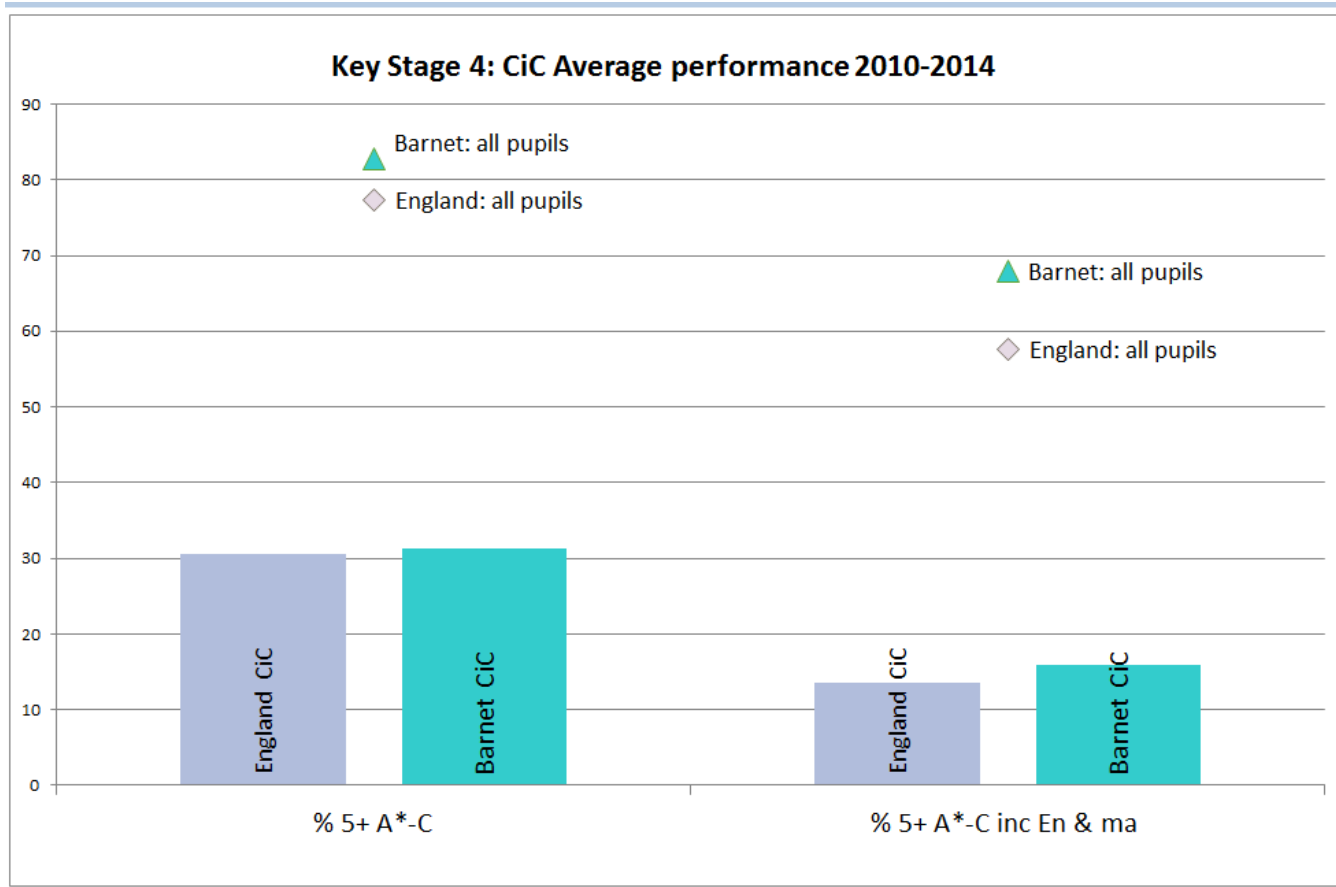
**Reasons for fixed-term exclusions
September 2013 - May 2014**

CiC KS2 2014 Reading & Maths tests, Writing TA: % Level 4+



NB Barnet cohort 8 pupils

5 year average performance

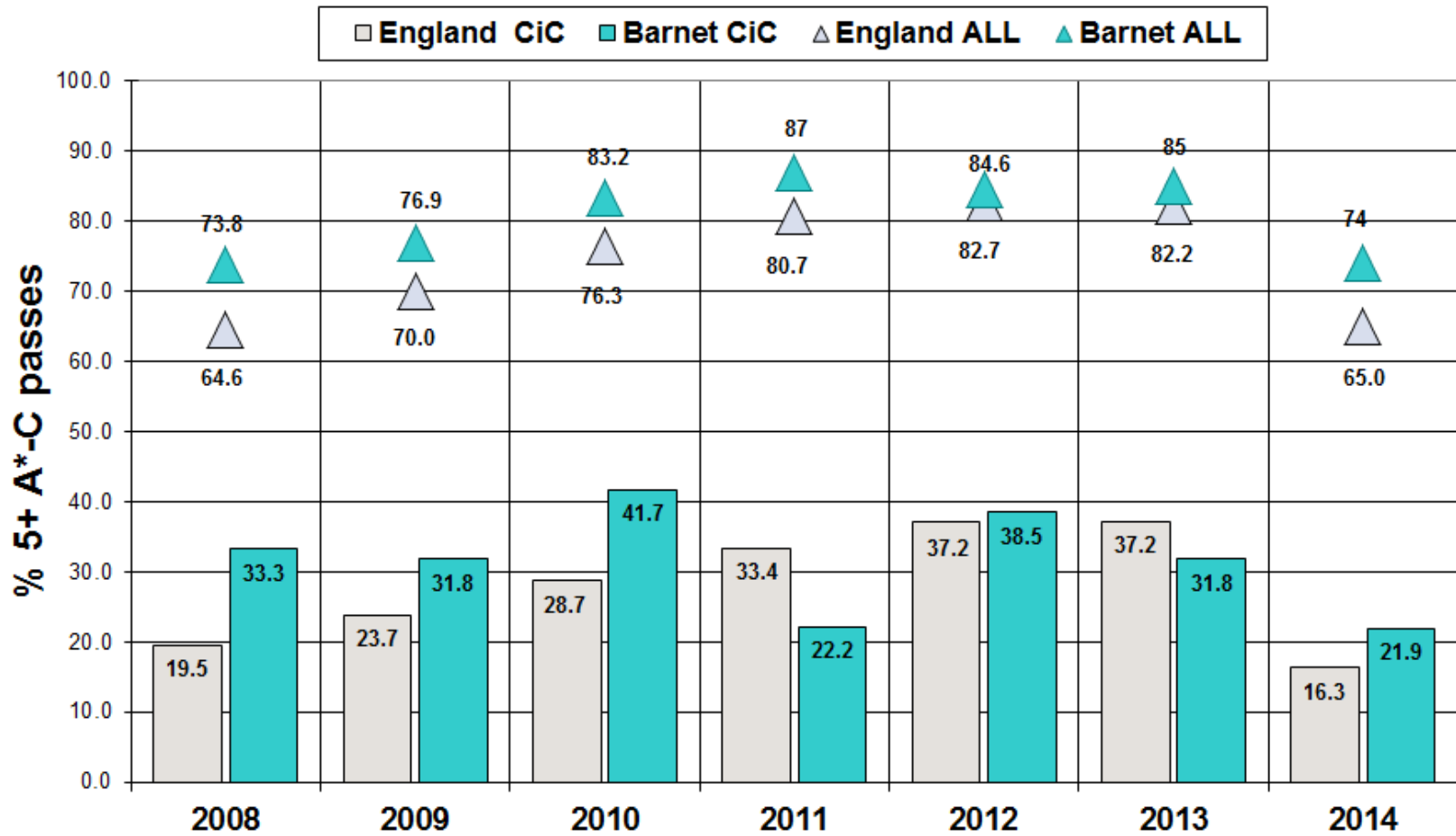


Small – and variable - numbers of Children in Care make year-on-year comparisons unreliable. A five-year average offers a more secure view of pupil outcomes

KS4 2010-14 average performance

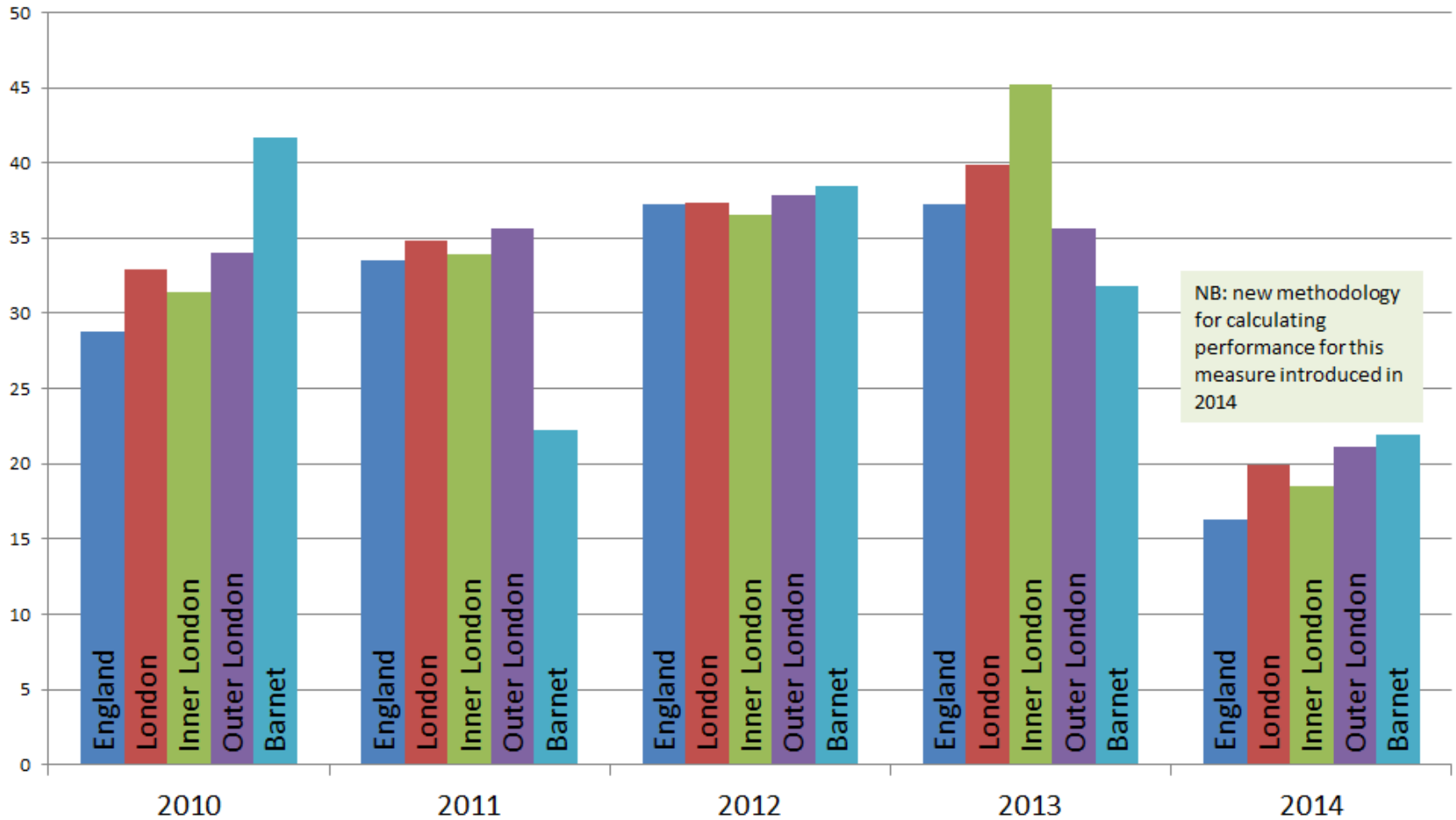
Barnet CiC % 5+A*-C inc En & ma is better than national CiC, but well below that of all pupils in Barnet and nationally.

% 5+ GCSE A*-C passes



2014 eligible cohort: 32 pupils

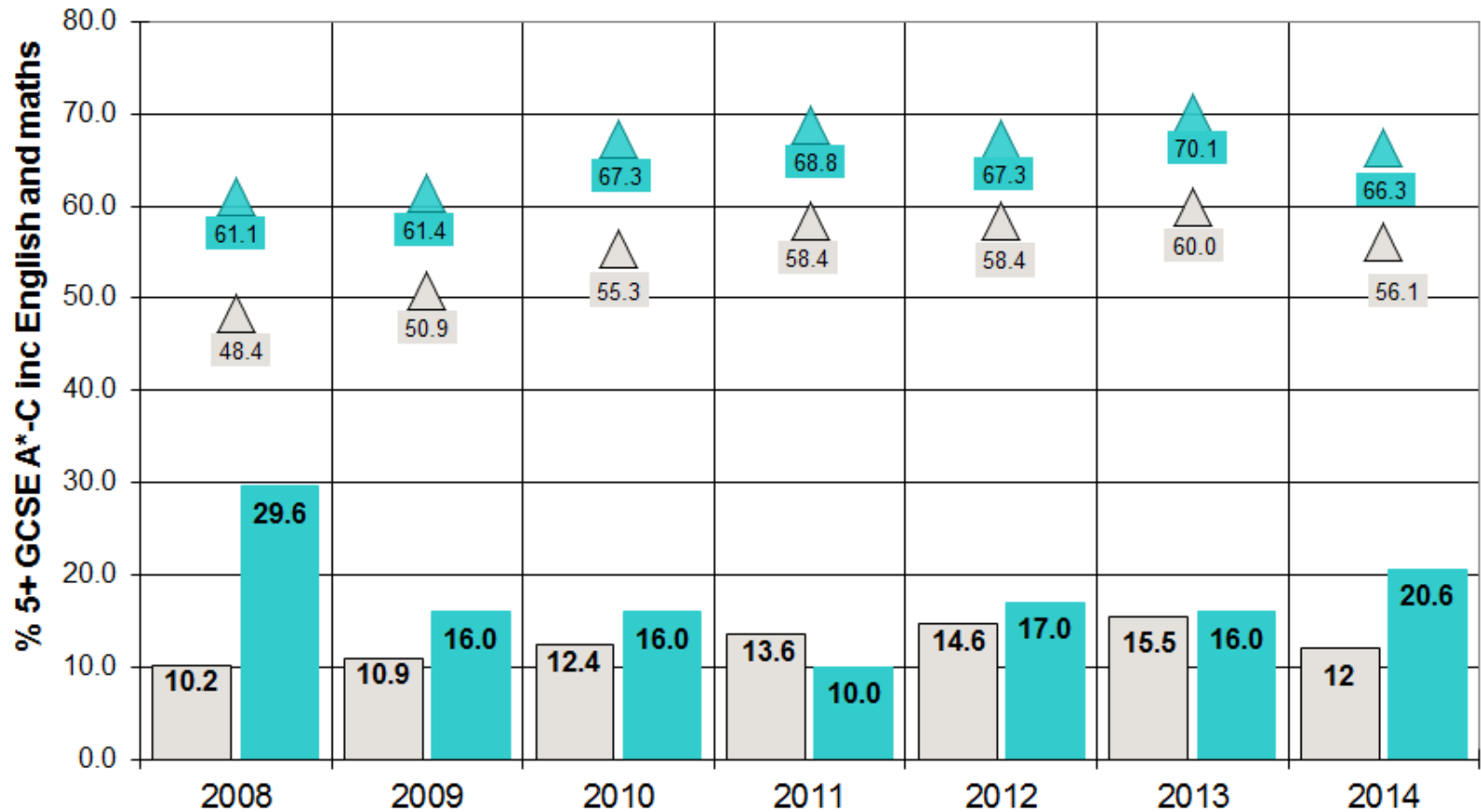
CiC % 5 +A*-C GCSE passes



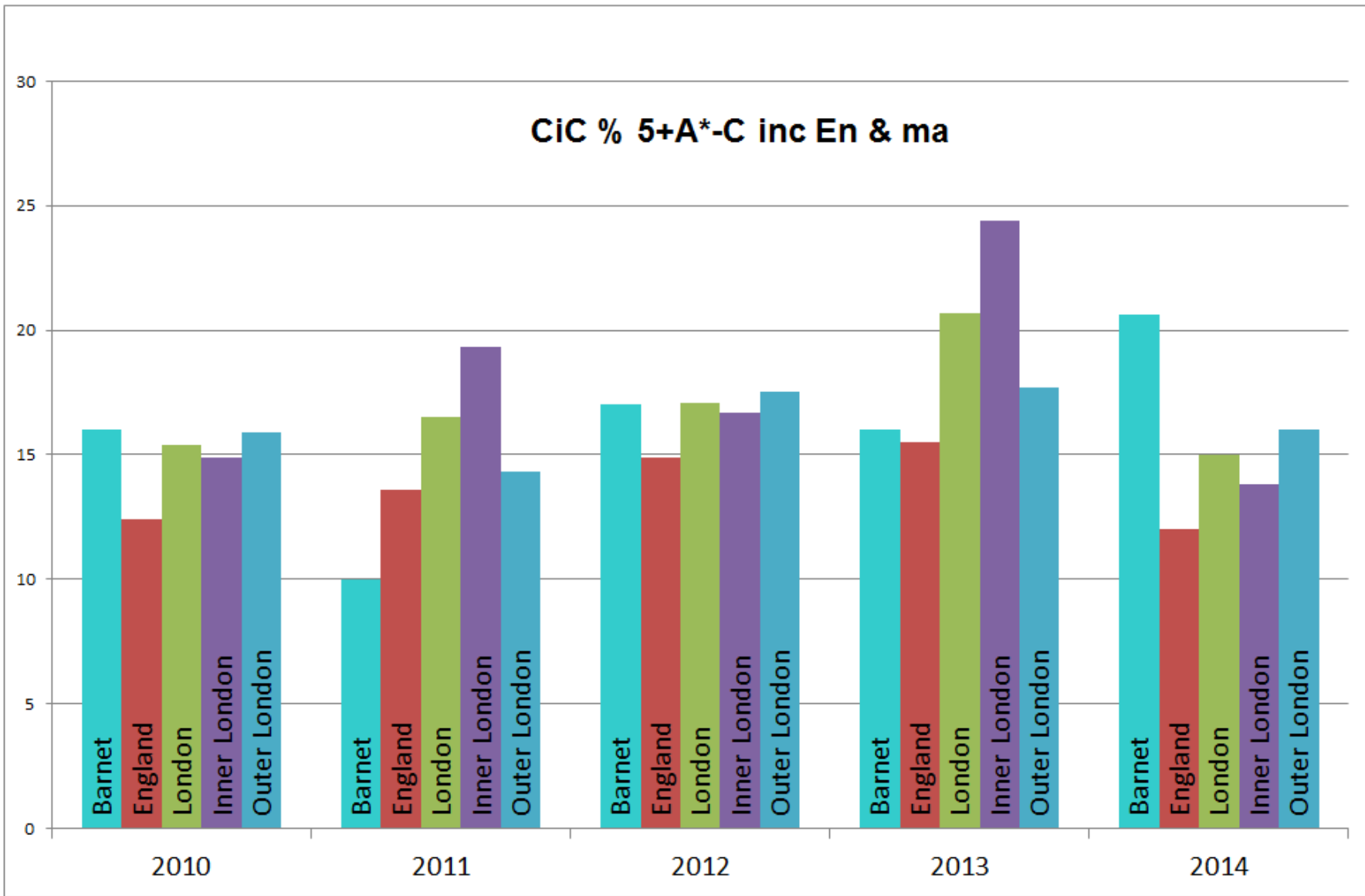
NB: new methodology for calculating performance for this measure introduced in 2014

% 5+ GCSE A*-C inc English and maths

□ ENGLAND CiC
■ Barnet CiC
△ England all pupils
▲ Barnet all pupils

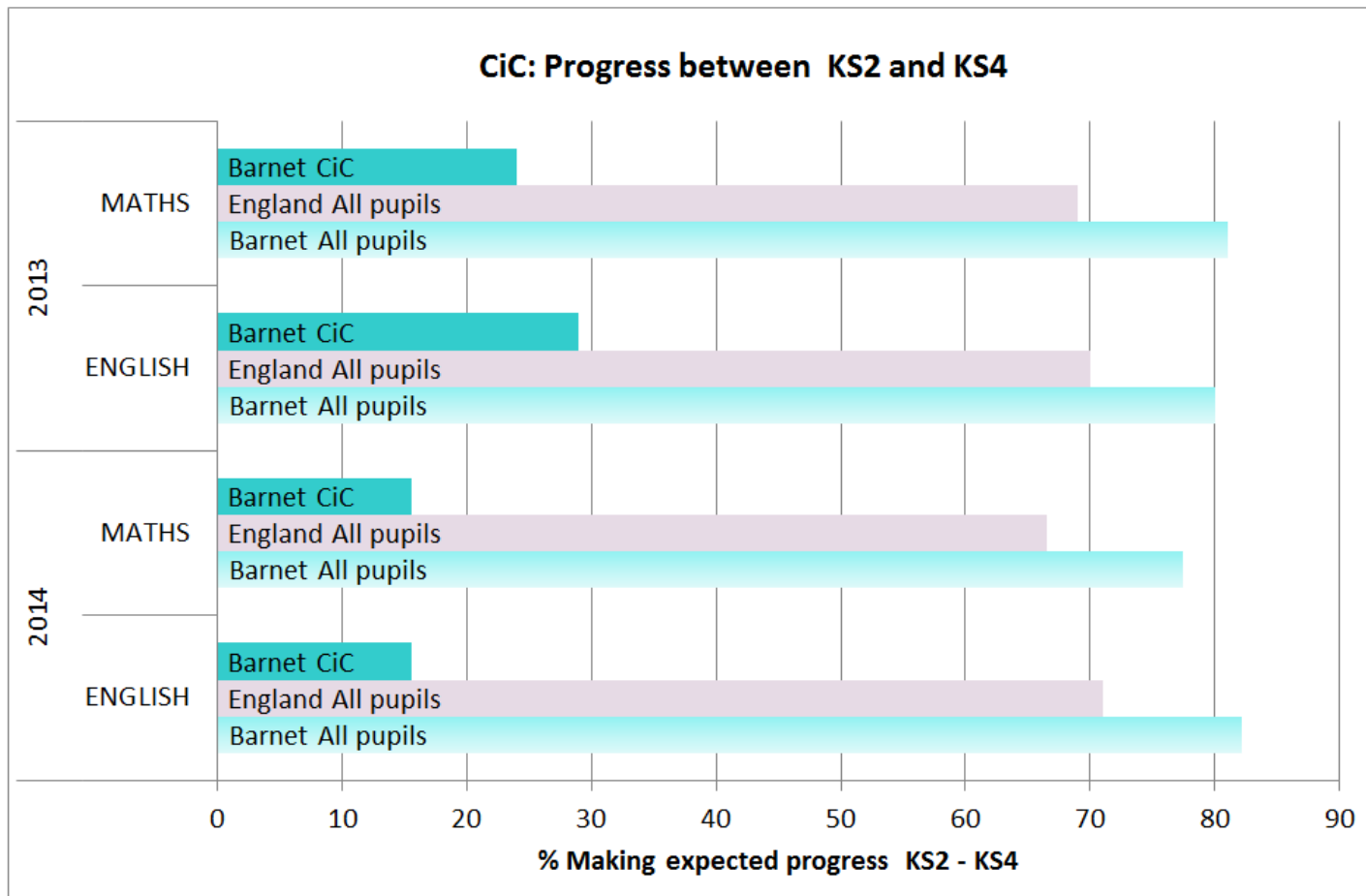


CiC % 5+A*-C inc En & ma



2014 eligible cohort: 32 pupils

Progress: KS2 – KS4 2014



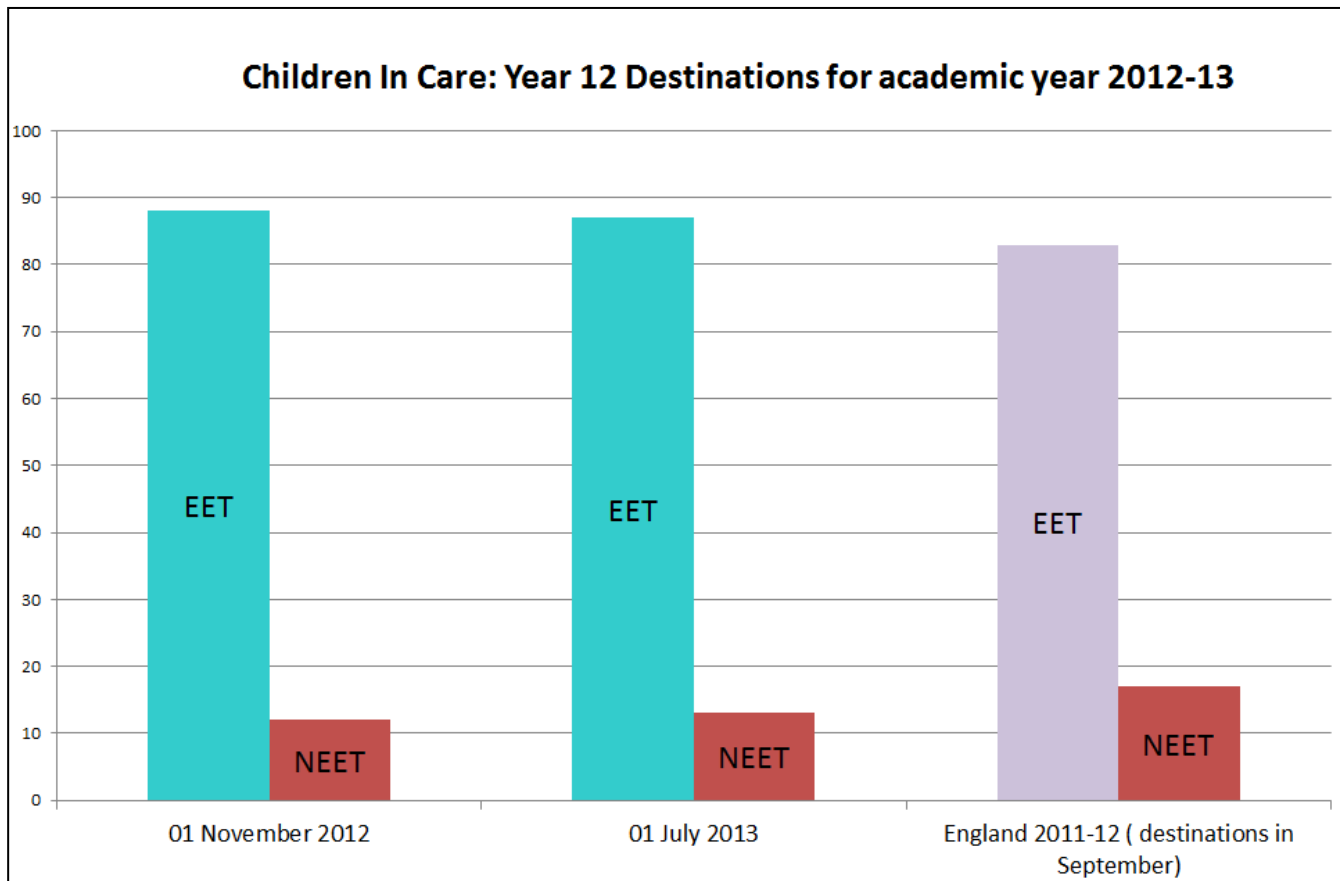
It is expected that most pupils will make at least 3 levels of progress in English and maths between Y6 and Y11. One of the priorities for the Virtual School is to improve progress

2013 eligible cohort: 22 pupils
2014 eligible cohort: 32 pupils

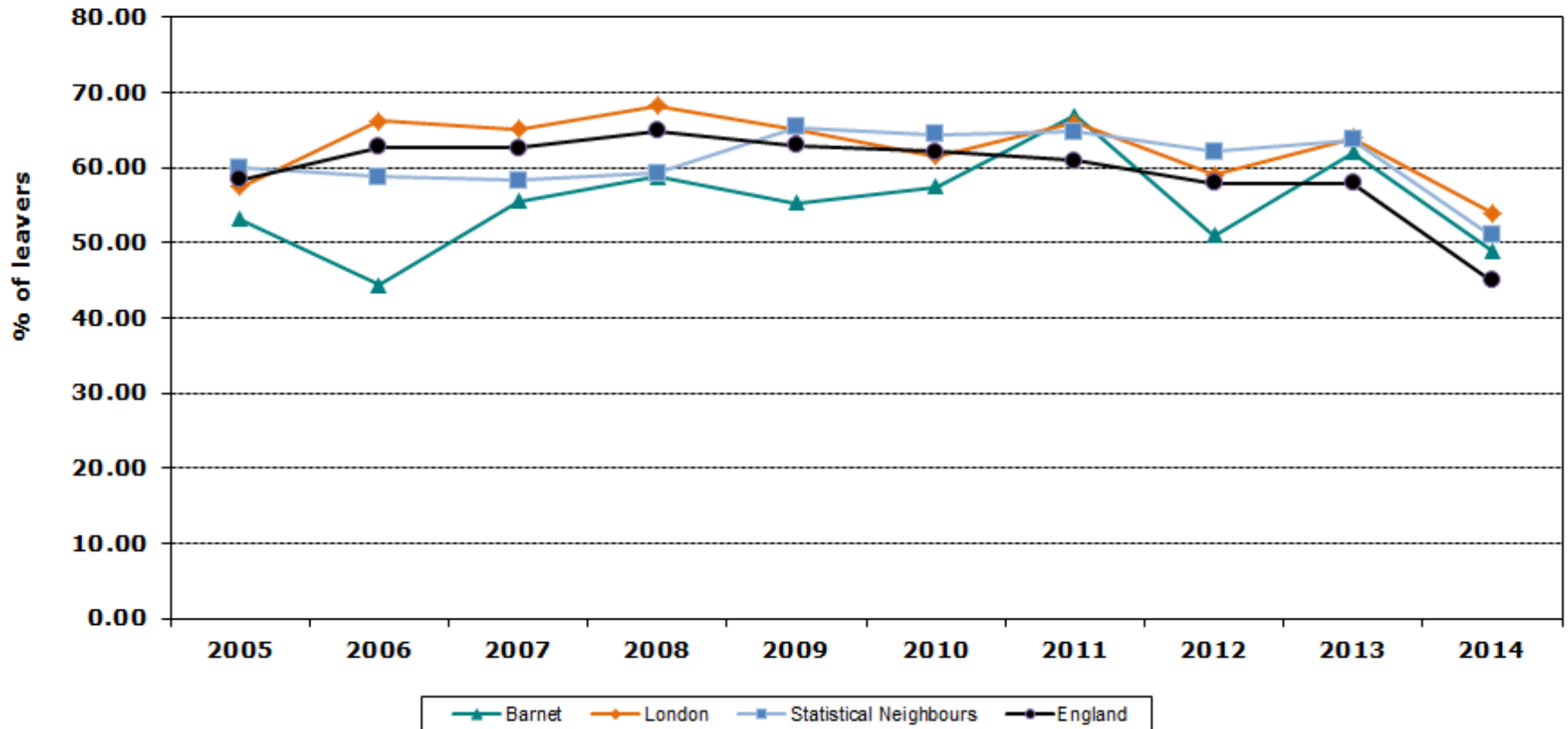
Year 12 destinations

EET means in Education Employment or Training
NEET means Not in Education, Employment or Training

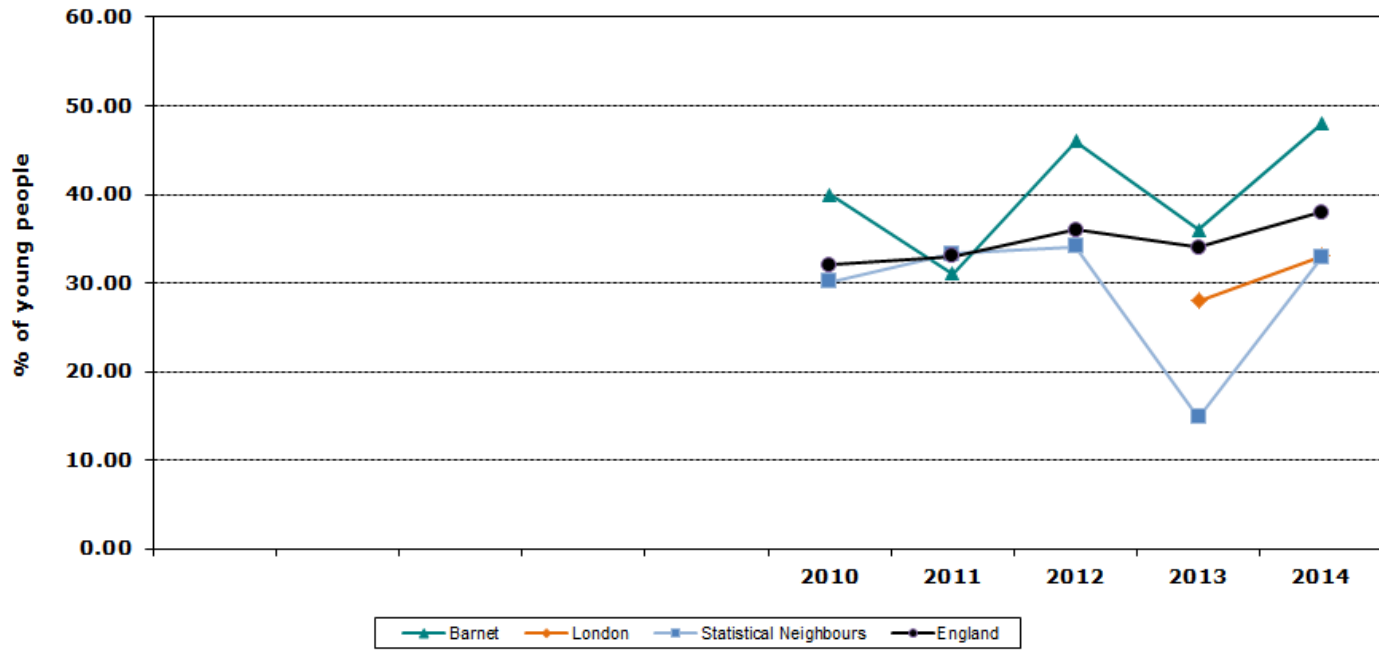
83% of CiC in England were in education, employment or training (EET) in Year 12 at the start of academic year 2012/13 compared with 88% of Barnet CiC. At the end of Year 12 in July 2013 87% of Barnet CiC were still EET.



Care Leavers (aged 19,20 and 21) - Education, Employment or Training

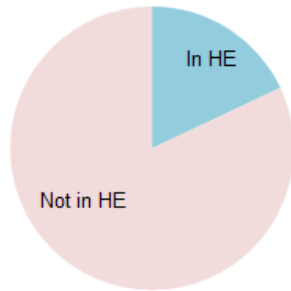


Careleavers (aged 19, 20 and 21) who were not in education, training or employment

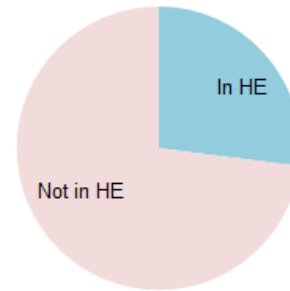


NEET rates for Barnet care leavers are much higher than national, London or statistical neighbours. We are working to discover the reasons for this and to improve participation rates

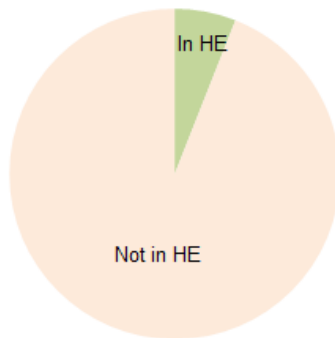
Barnet % LAC in HE 2013



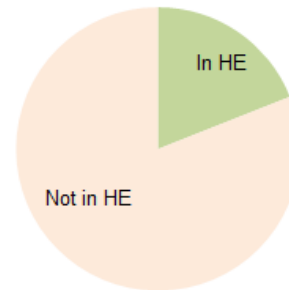
Barnet % LAC in HE 2014



England % LAC in HE 2013



England % LAC in HE 2014



The proportion of young people in care entering higher education is higher in Barnet than nationally