

Barnet Performance Data 2012

Initial analysis

October 2012

Early Years Foundation Stage

Key Stage 1

Key Stage 2

Key Stage 4

A level

Based on unvalidated data

NB: unvalidated data – subject to change

Headlines

Attainment in all key stages and in all subjects continues to place Barnet in the top quartile of local authorities

NB: unvalidated data – subject to change

Early Years Foundation Stage

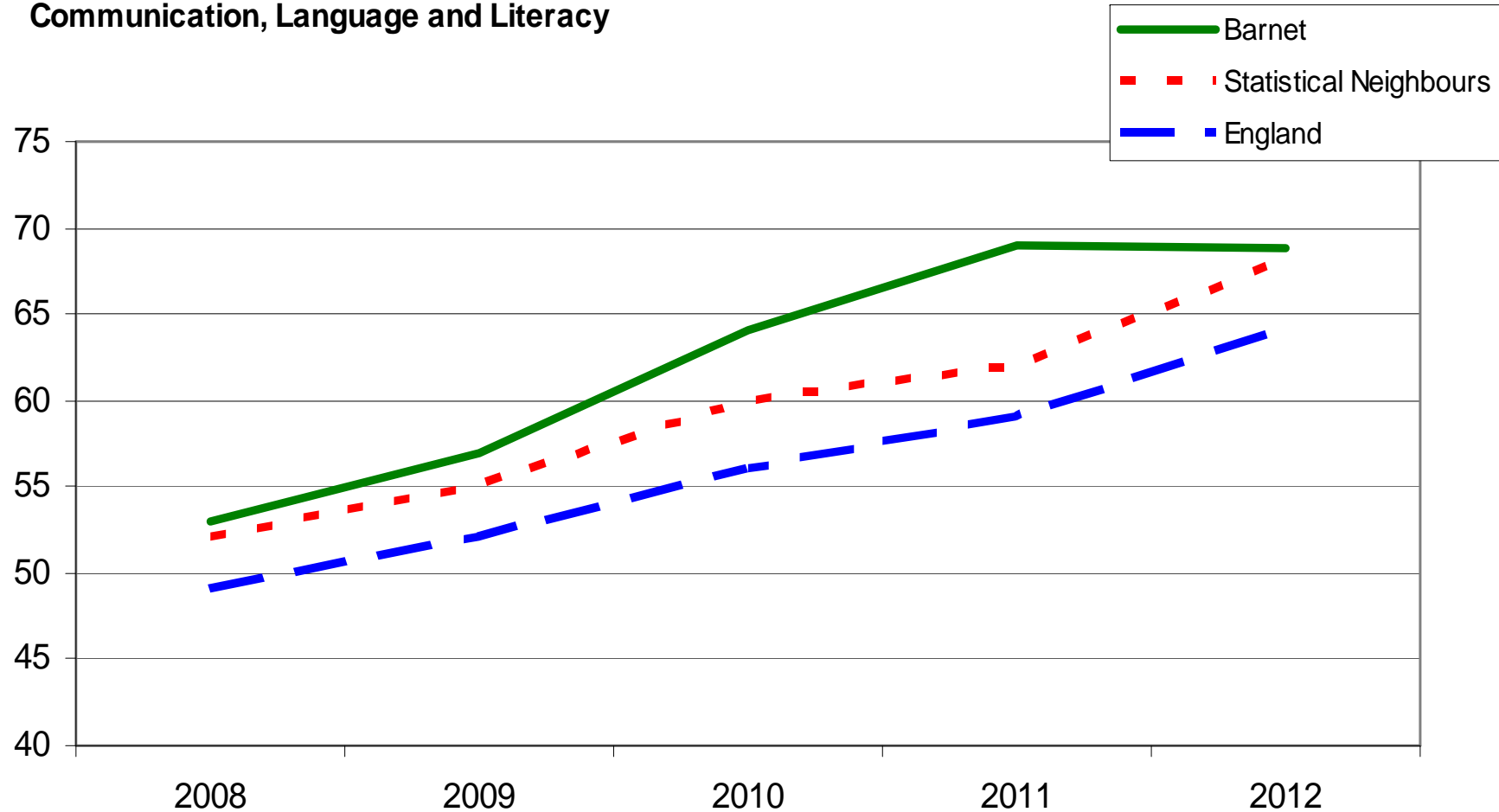
- overall 2012 performance in line with 2011
- gap between Barnet and statistical neighbours narrowing

But

- gap between the lowest achieving 20% and the rest increased - after 5 years of continuous closing of the gap.

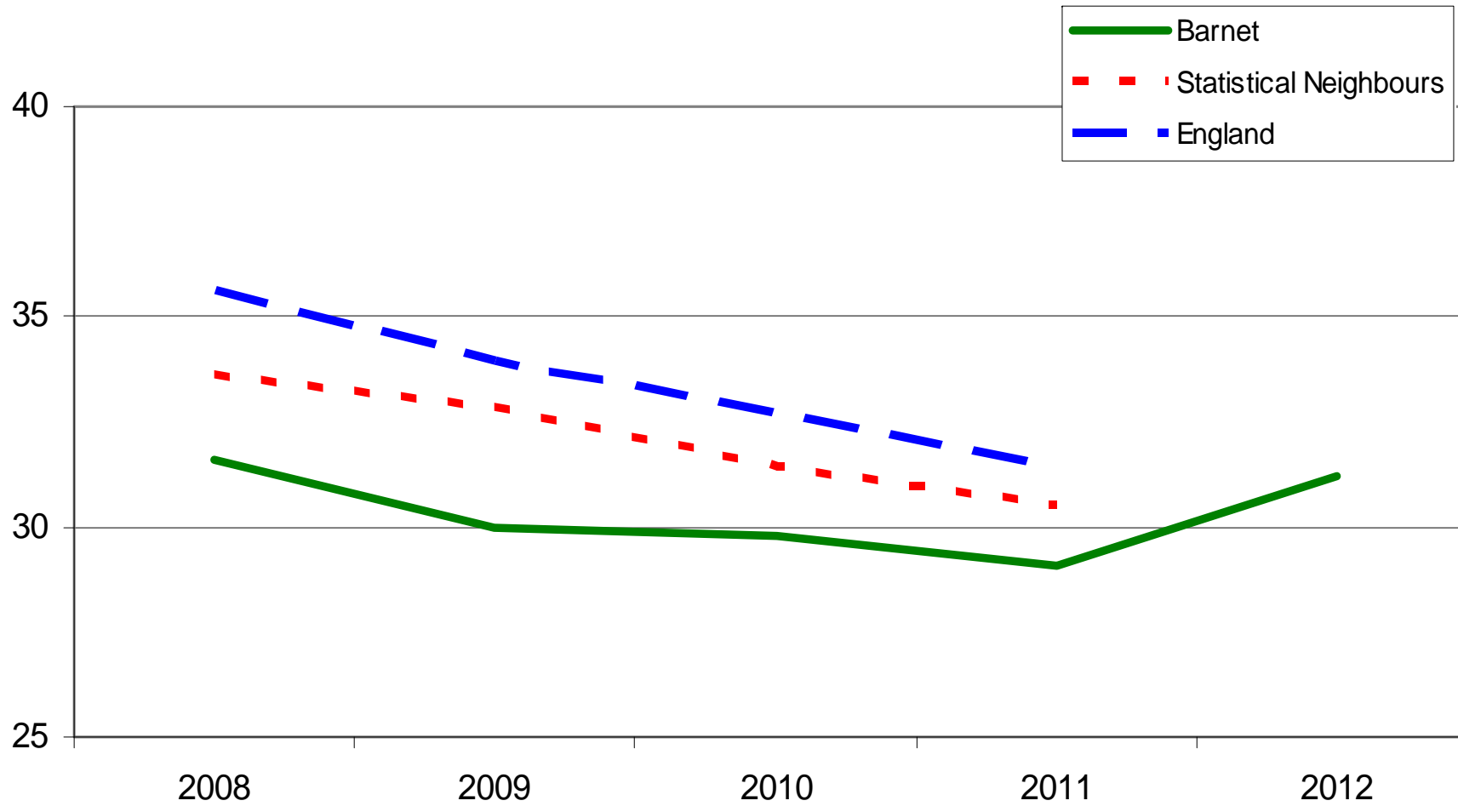
NB: unvalidated data – subject to change

Achievement of at least 78 points across the Early Years Foundation Stage with at least 6 in each of the scales in Personal Social and Emotional Development and Communication, Language and Literacy



NB: unvalidated data – subject to change

The gap between the lowest achieving 20% in the Early Years Foundation Stage and the rest



Key Stage 1

Y1 Phonics screening test

KS1 Assessments

Reading

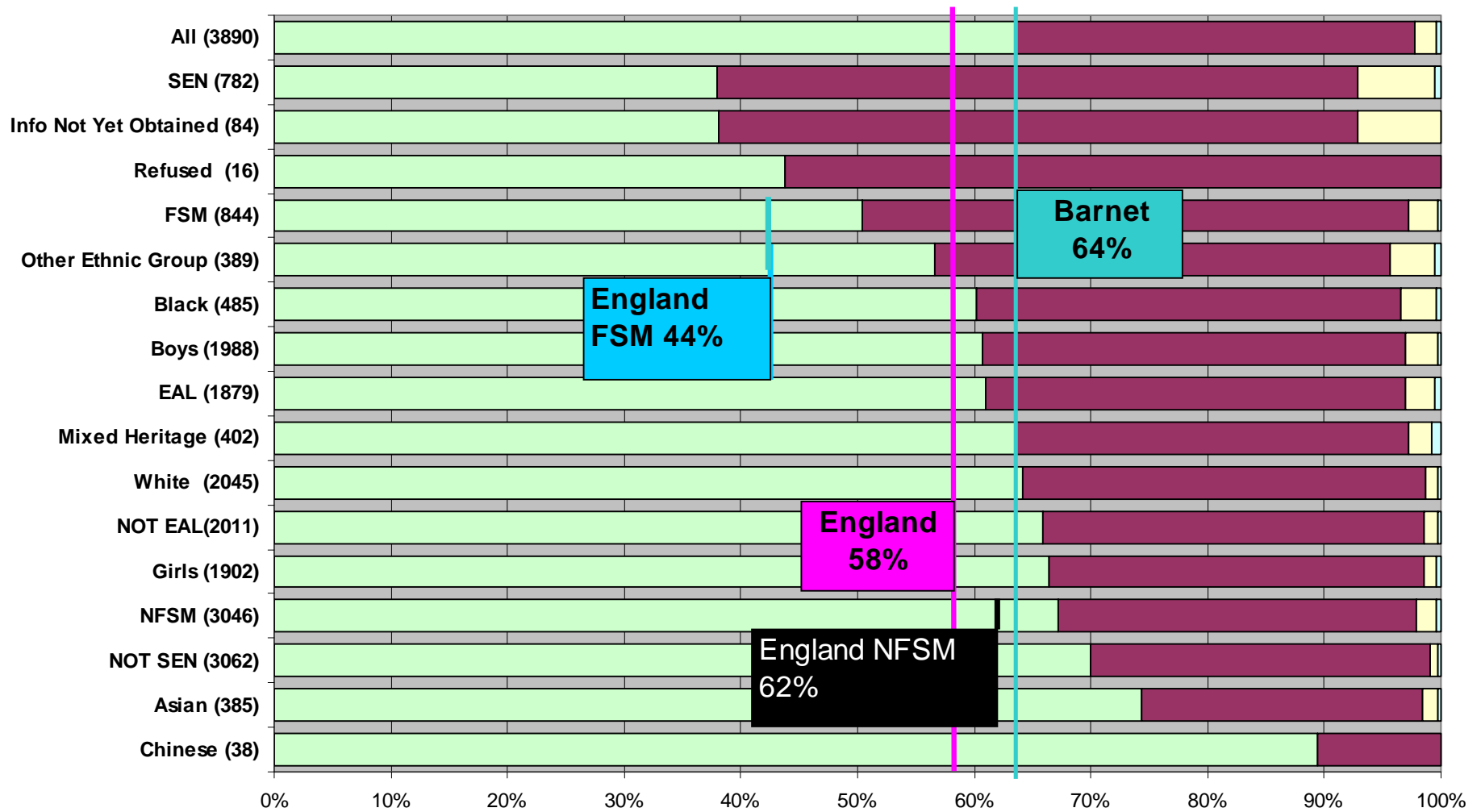
Writing

Maths

NB: unvalidated data – subject to change

BARNET: PHONICS TEST 2012

■ Working At
 ■ Working towards
 ■ Disapplied
 ■ Absent



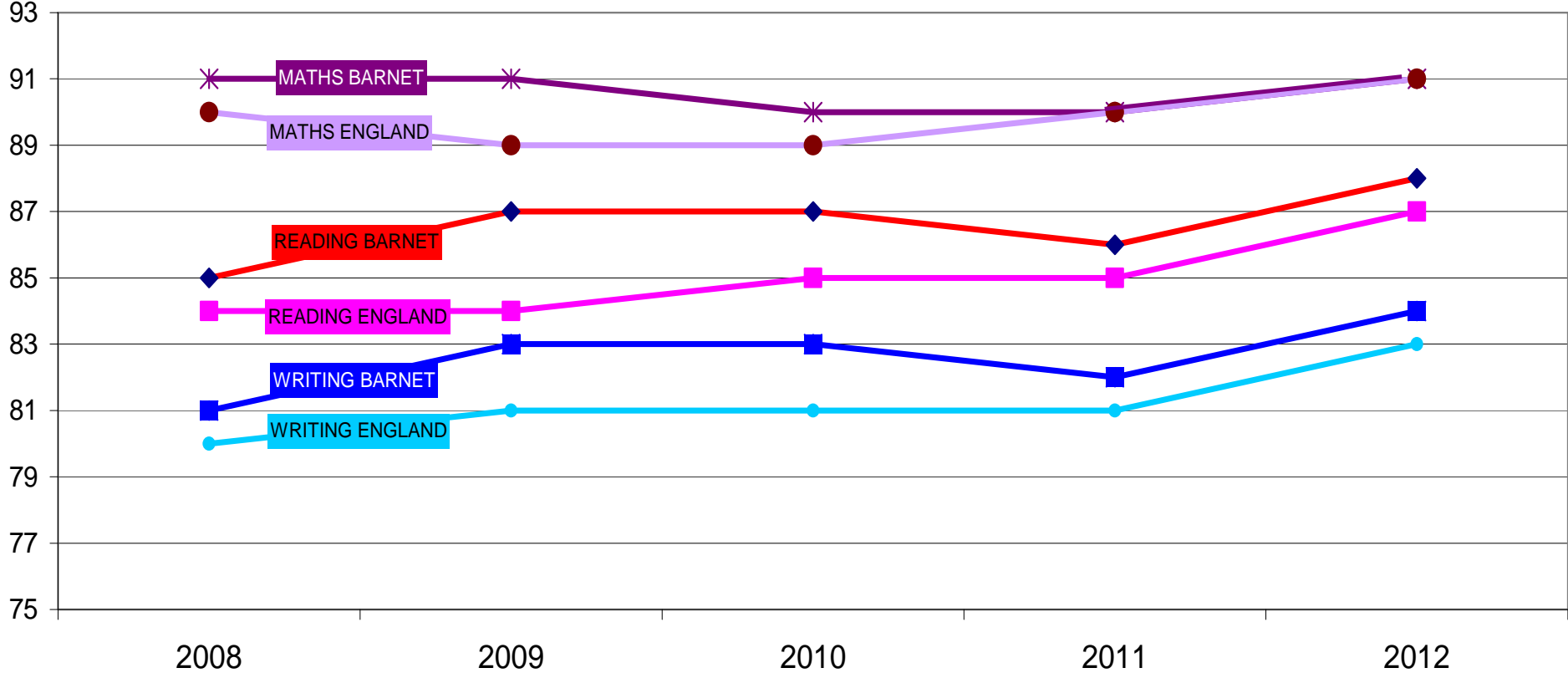
NB: unvalidated data – subject to change

KS1 Assessments 2012: Headlines

- All pupils: year on year improvement at 2+ in all subjects; variable outcomes at 2B+ and L3
- Improvements in line with national and SN
- Improvements RWM combined year-on-year for FSM pupils at all levels : FSM gap narrowed on 2011
- Writing continues to lag behind Reading and Maths

NB: unvalidated data – subject to change

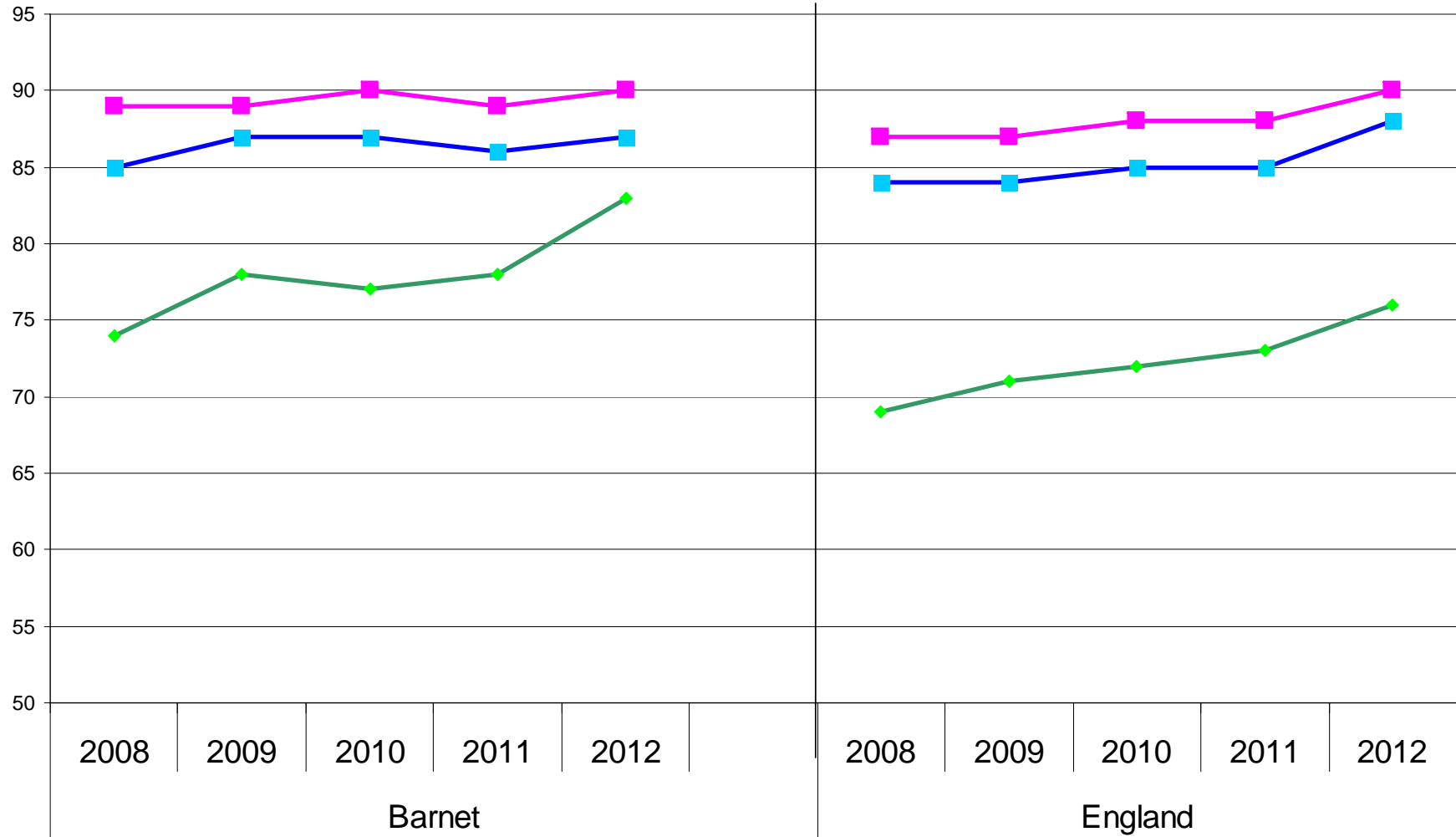
KS1 ASSESSMENT LEVEL 2+



NB: unvalidated data – subject to change

KS1 READING L2+

—◆— FSM —■— NFSM —■— ALL



Barnet

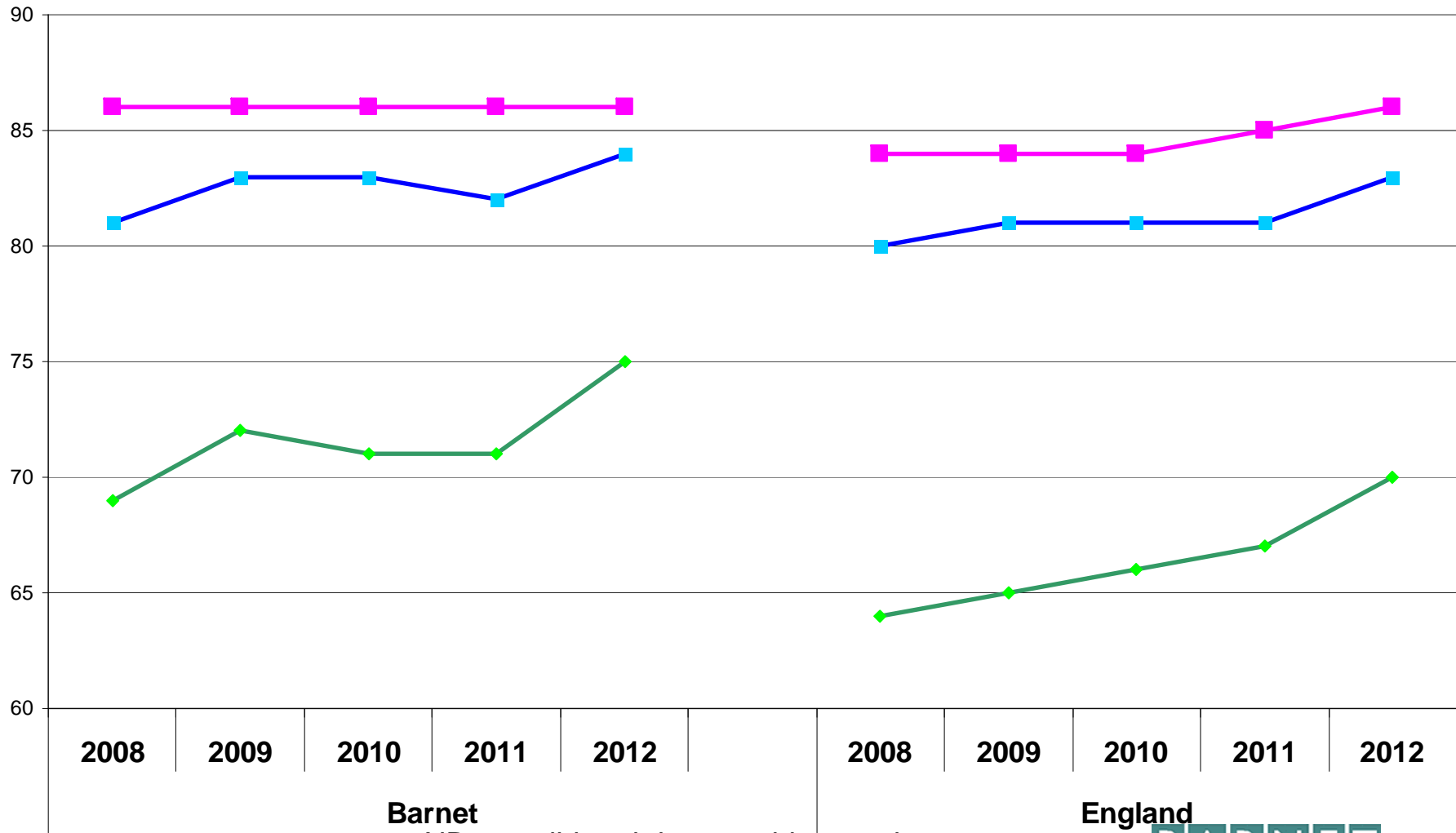
England

NB: unvalidated data – subject to change



KS1 WRITING L2+

—◆— FSM —■— NFSM —■— ALL



Barnet

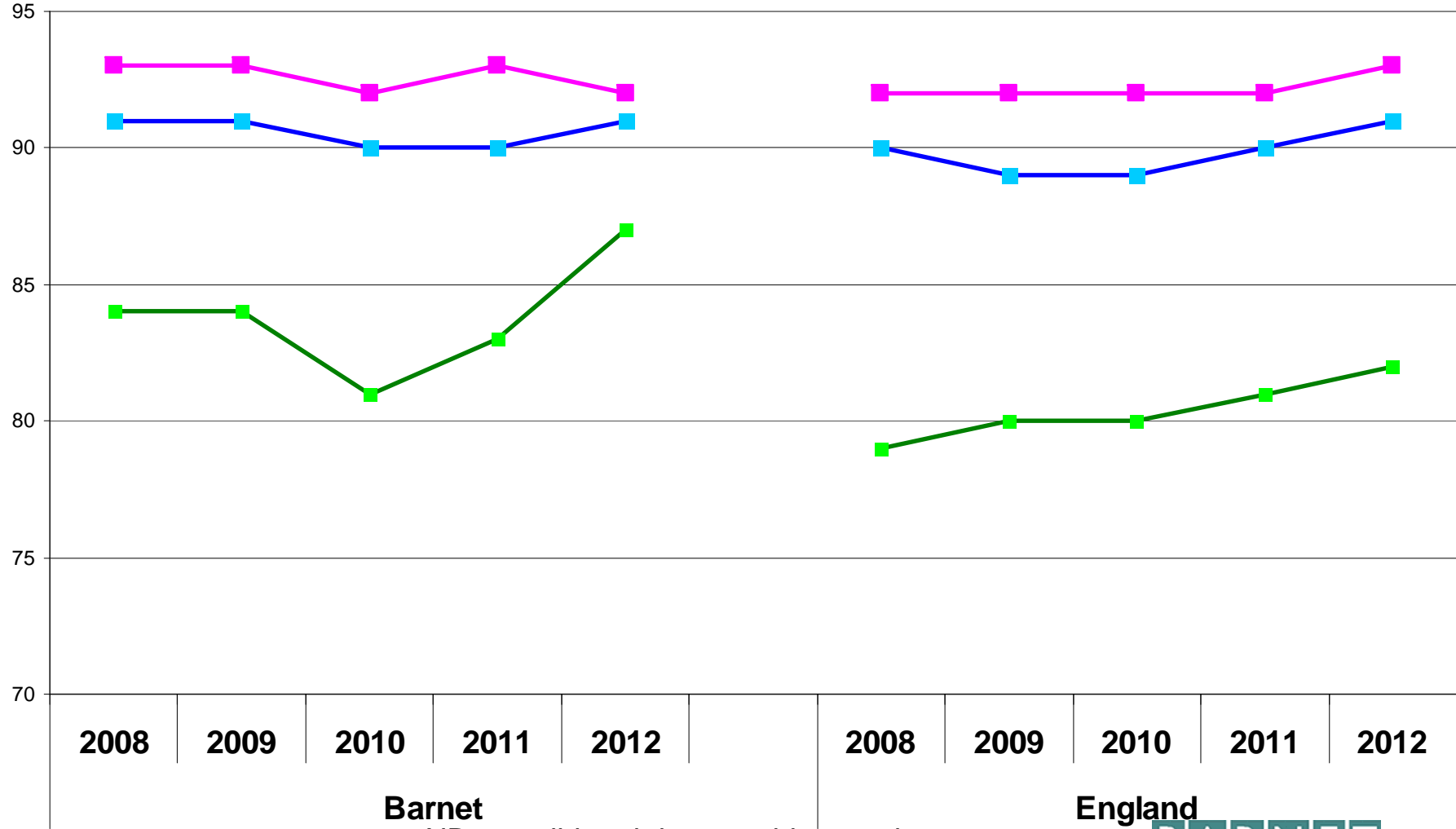
NB: unvalidated data – subject to change

England



KS1 MATHS L2+

FSM NFSM ALL



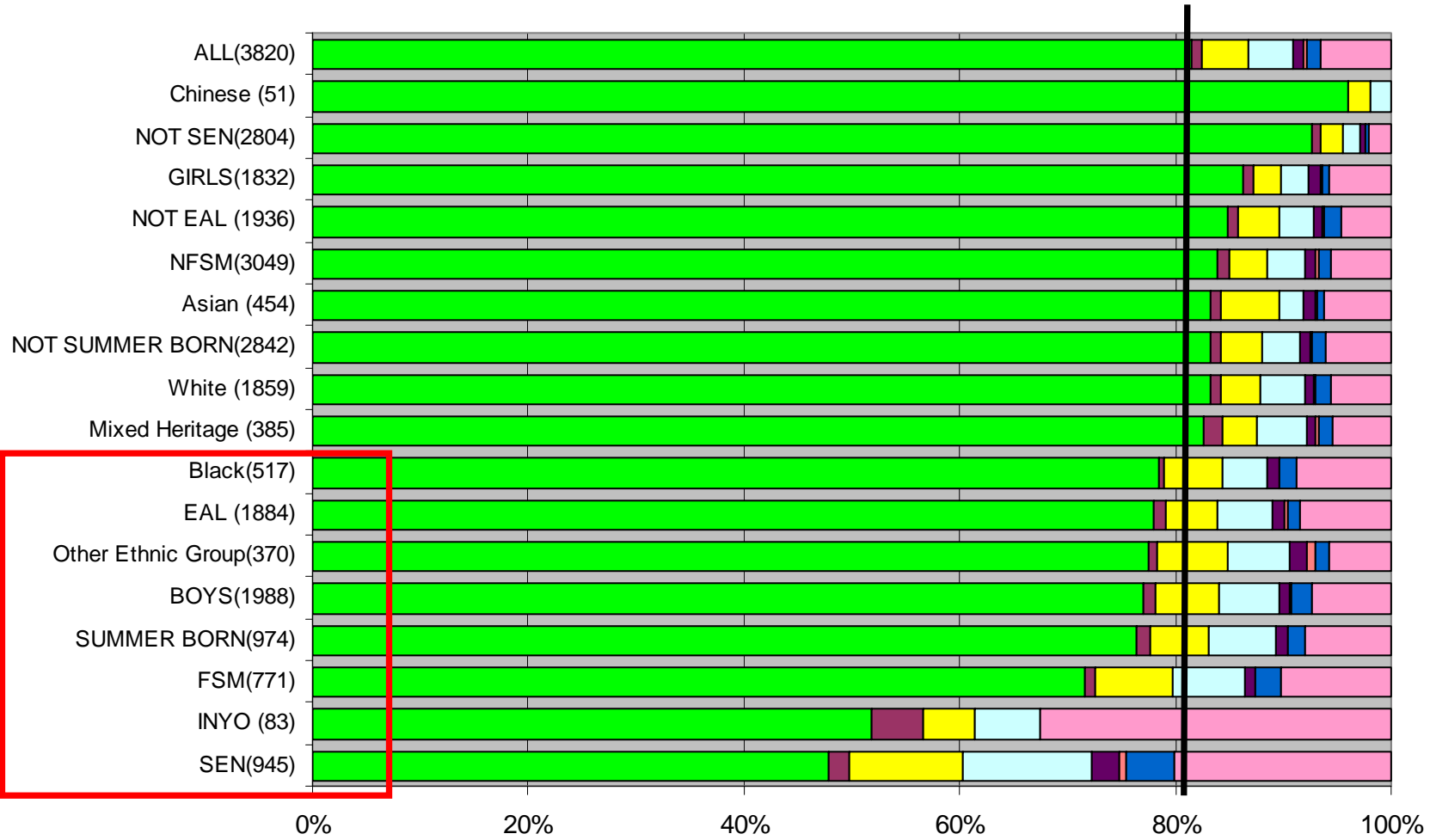
Barnet

England

NB: unvalidated data – subject to change

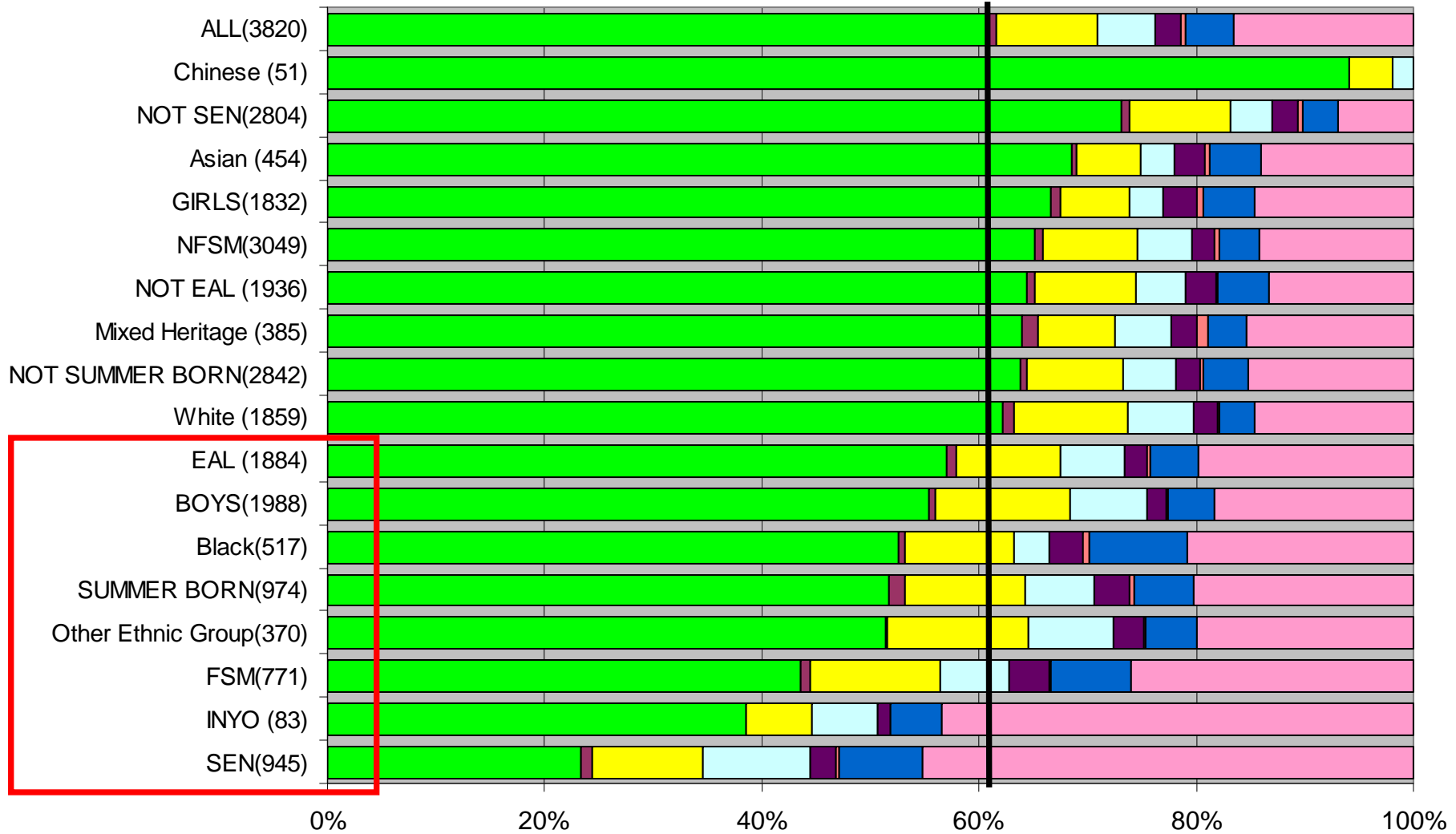


Barnet KS1 2012: L2+



NB: unvalidated data – subject to change

BARNET KS1 2012 L2B+



KS1: Areas for development

- Writing for all groups
- Boys' Literacy at all levels
- FSM pupils' performance at L2B+ and L3
- EAL learners' Literacy at L2+

NB: unvalidated data – subject to change

Key Stage 2

End of Key Stage assessments

Both English and maths

English

Maths

Key Stage 1 to 2 progress
measures

NB: unvalidated data – subject to change

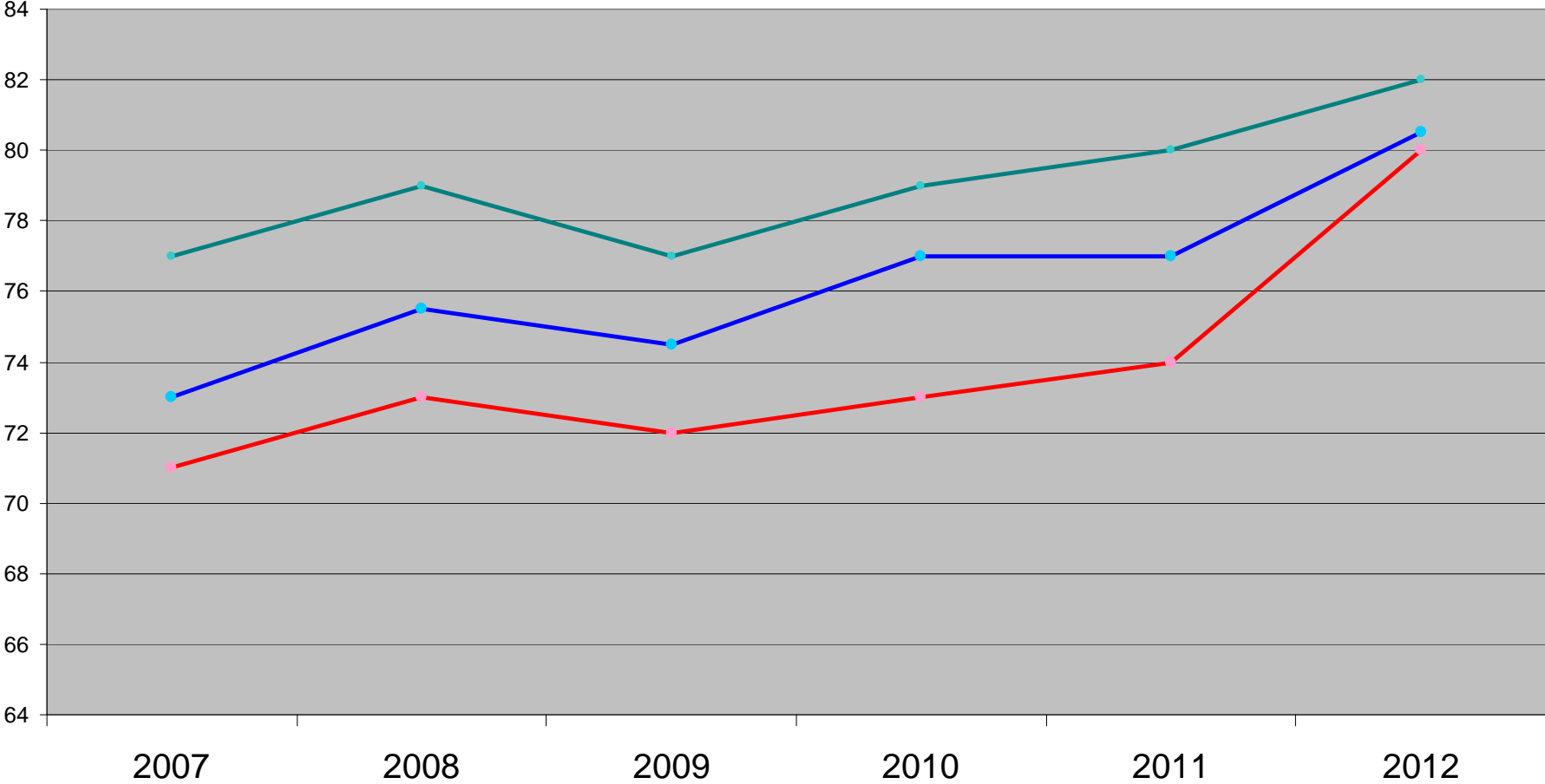
KS2 assessments 2012 : headlines

- Year-on-year improvements for all groups
- Improvement in writing
- NFSM / FSM gap narrowed year-on-year

NB: unvalidated data – subject to change

KS2 %L4+ Both English and maths

ENGLAND Barnet Statistical Neighbour Median

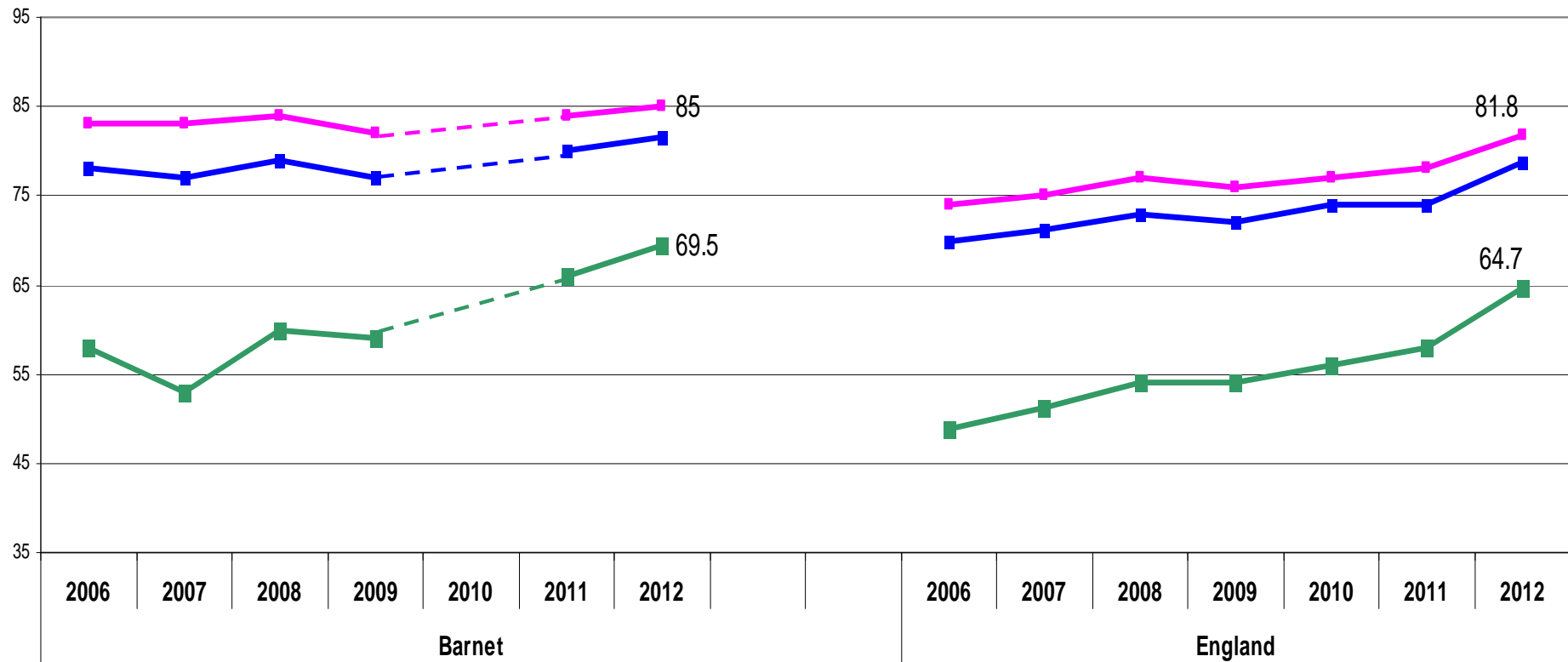


NB: unvalidated data – subject to change



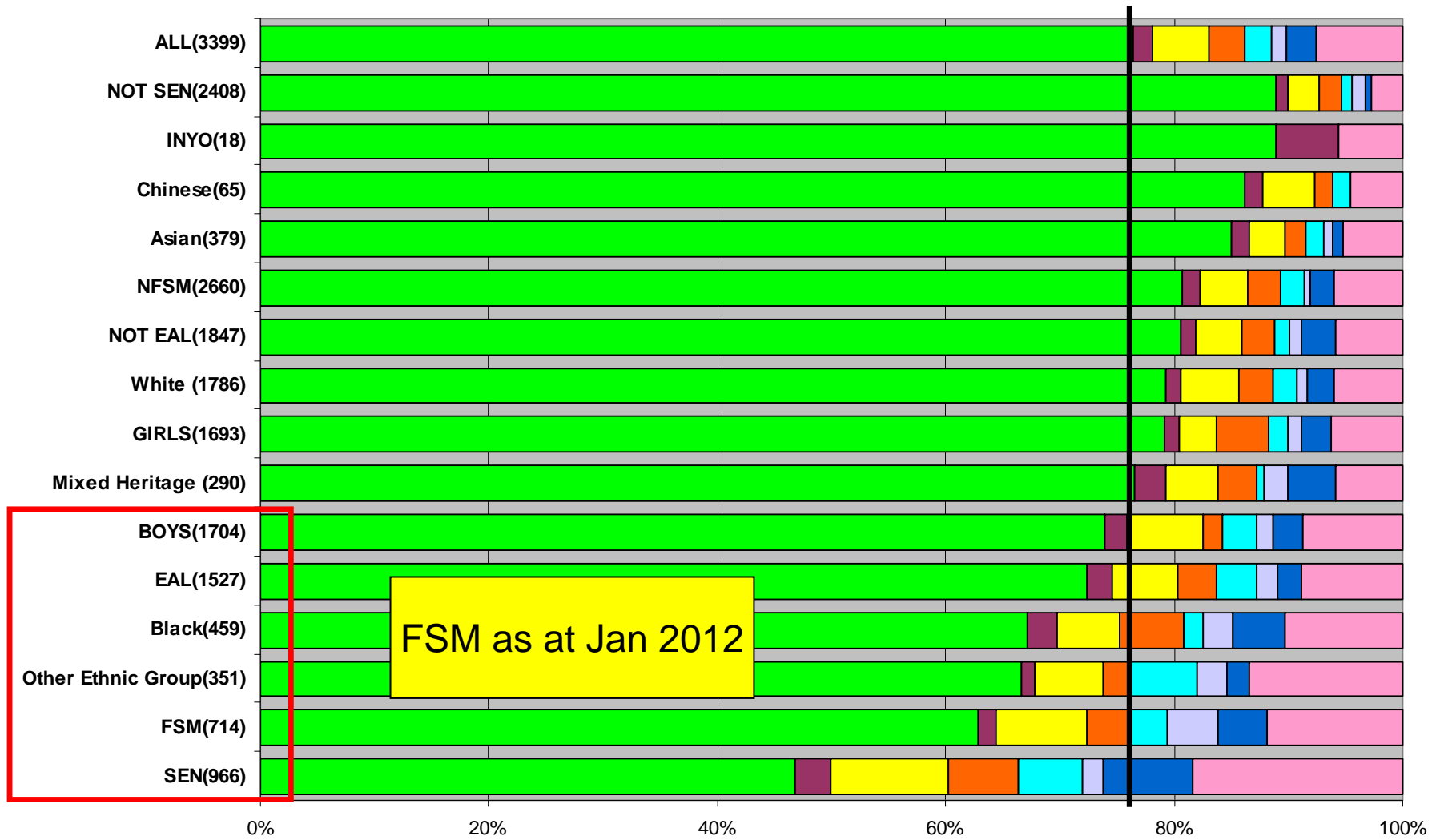
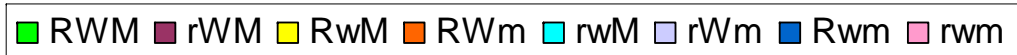
KS2 : L4+ ENGLISH & MATHS

FSM NFSM ALL



NB: unvalidated data – subject to change

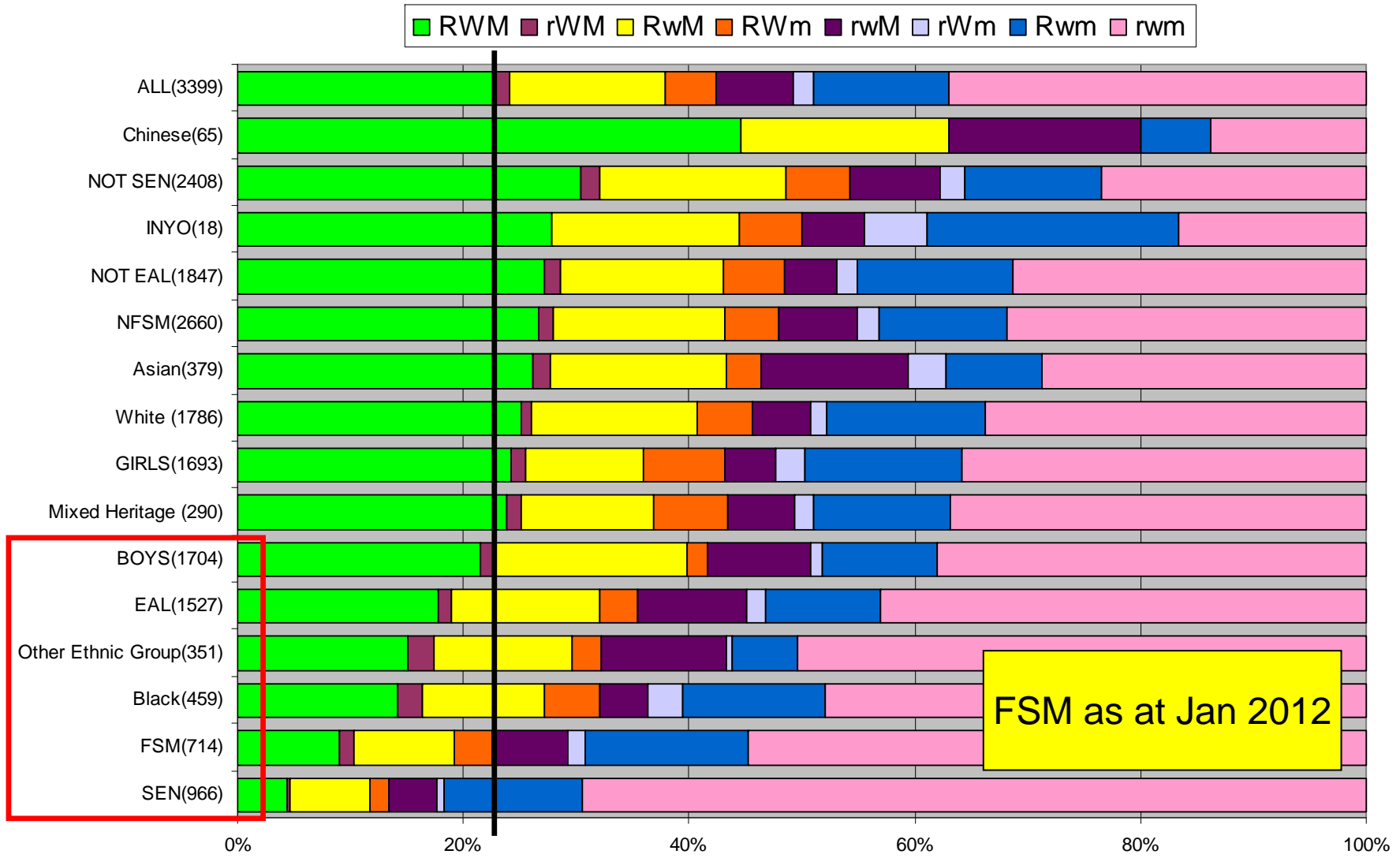
BARNET KS2 ASSESSMENT 2012 : L4+



FSM as at Jan 2012

NB: unvalidated data – subject to change

BARNET KS2 ASSESSMENT 2012: L5+

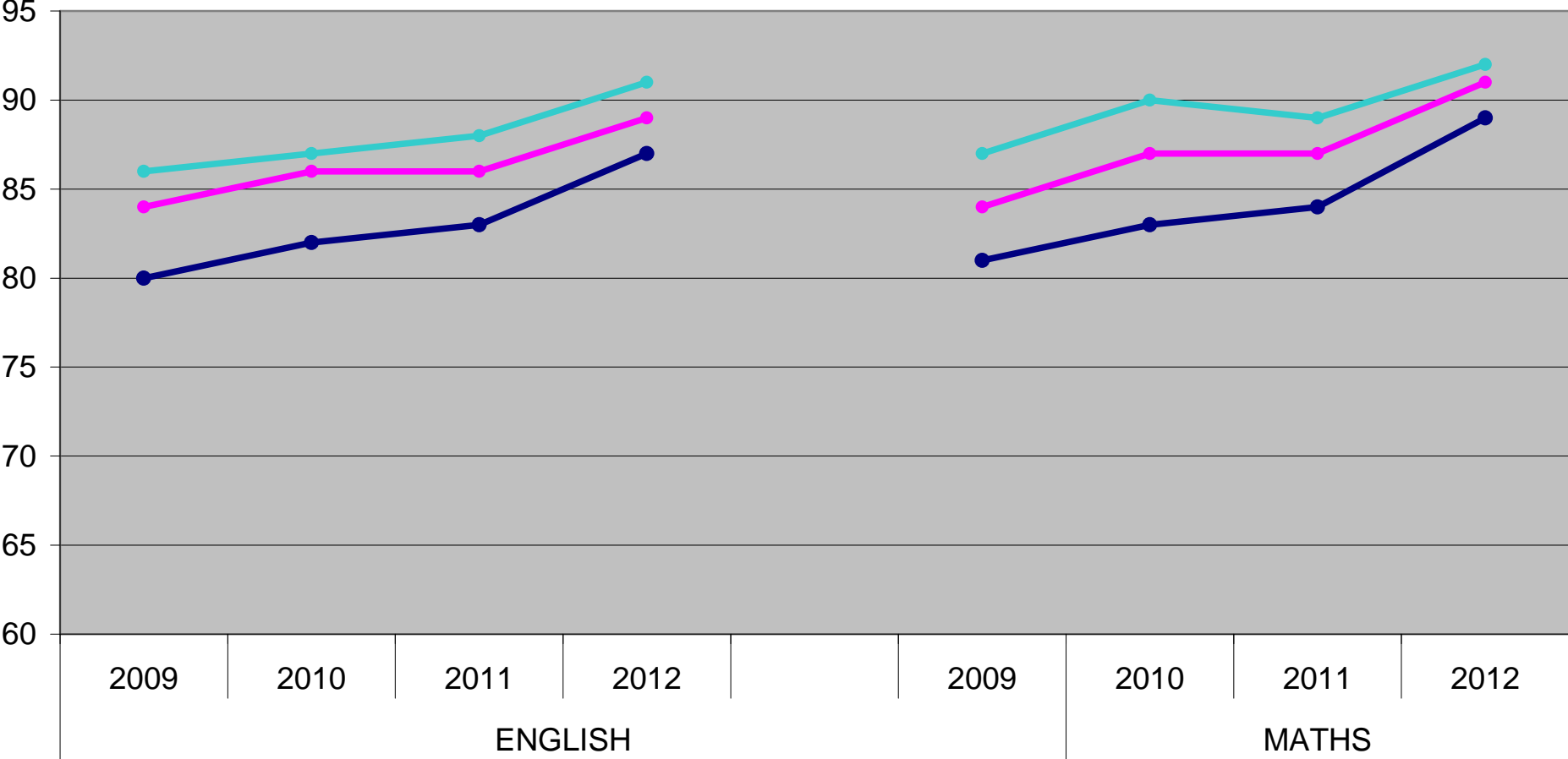


NB: unvalidated data – subject to change

FSM as at Jan 2012

2012 PROGRESS KS1 - KS2

ENGLAND Statistical Neighbour median Barnet

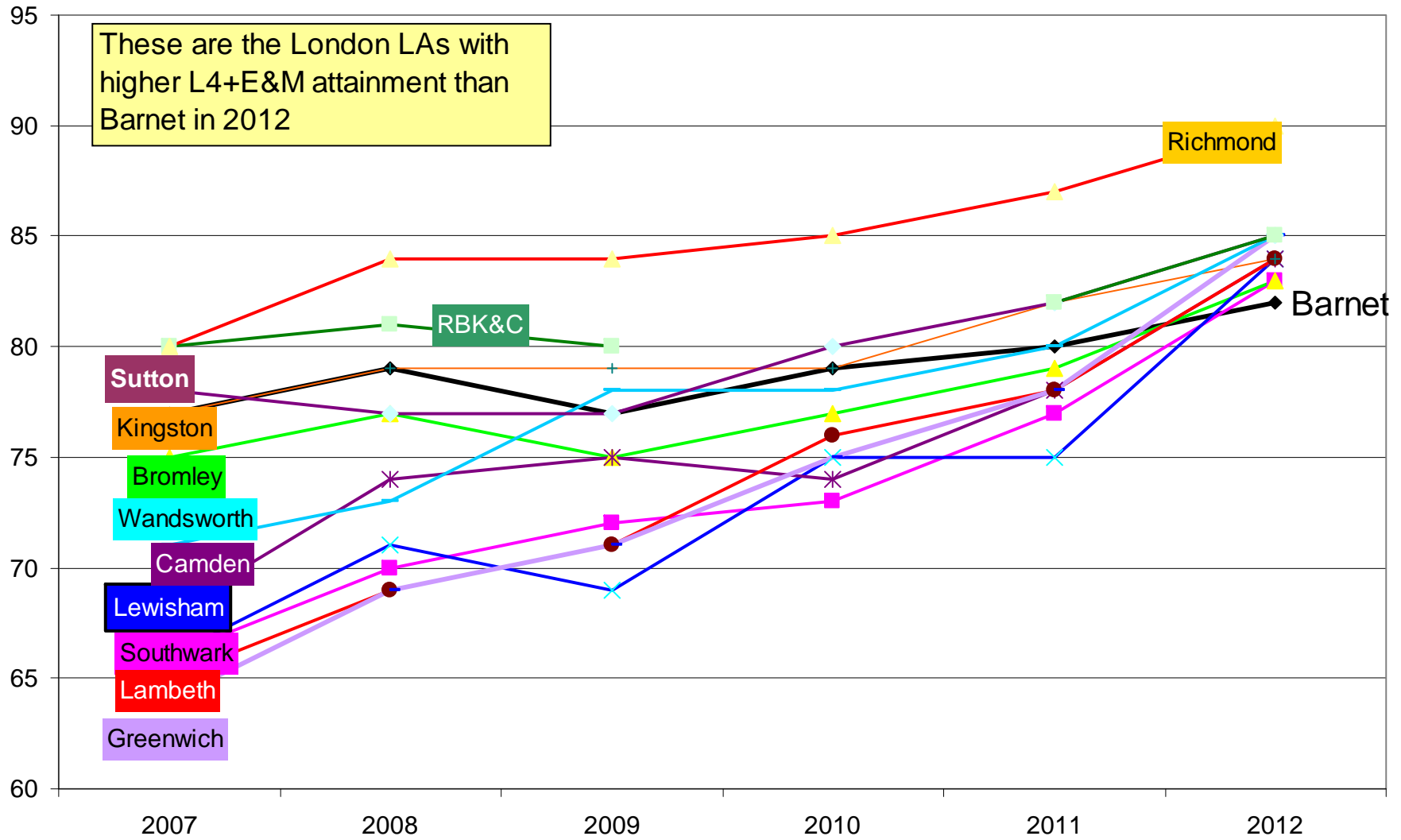


NB: unvalidated data – subject to change



KS2: E&M % L4+ Barnet slipping?

These are the London LAs with higher L4+E&M attainment than Barnet in 2012



NB: unvalidated data – subject to change

Key Stage 4: GCSE

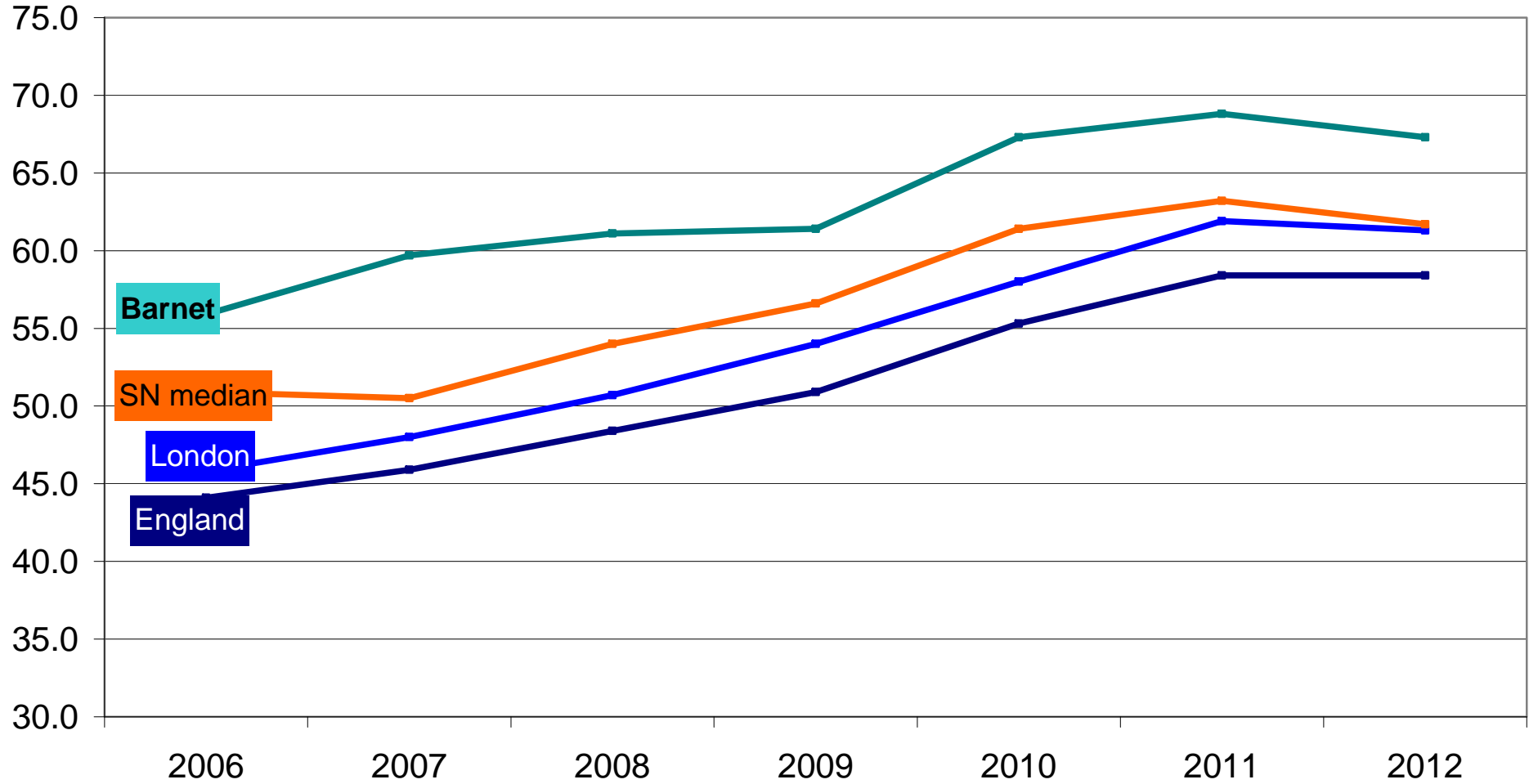
5+ GCSE A*-C inc English and
maths

Progress measures

EBaCC

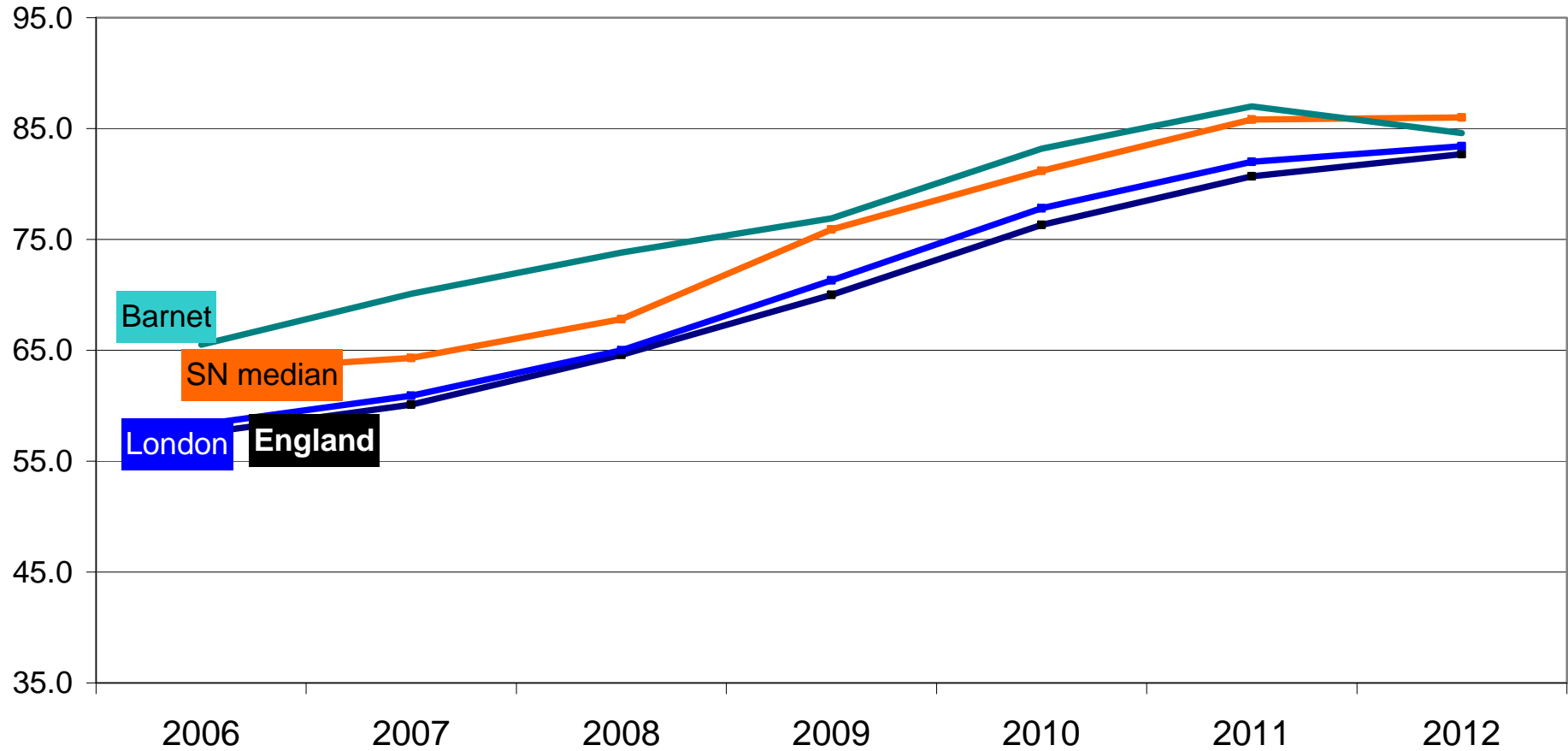
NB: unvalidated data – subject to change

% 5+A*-C inc E&M



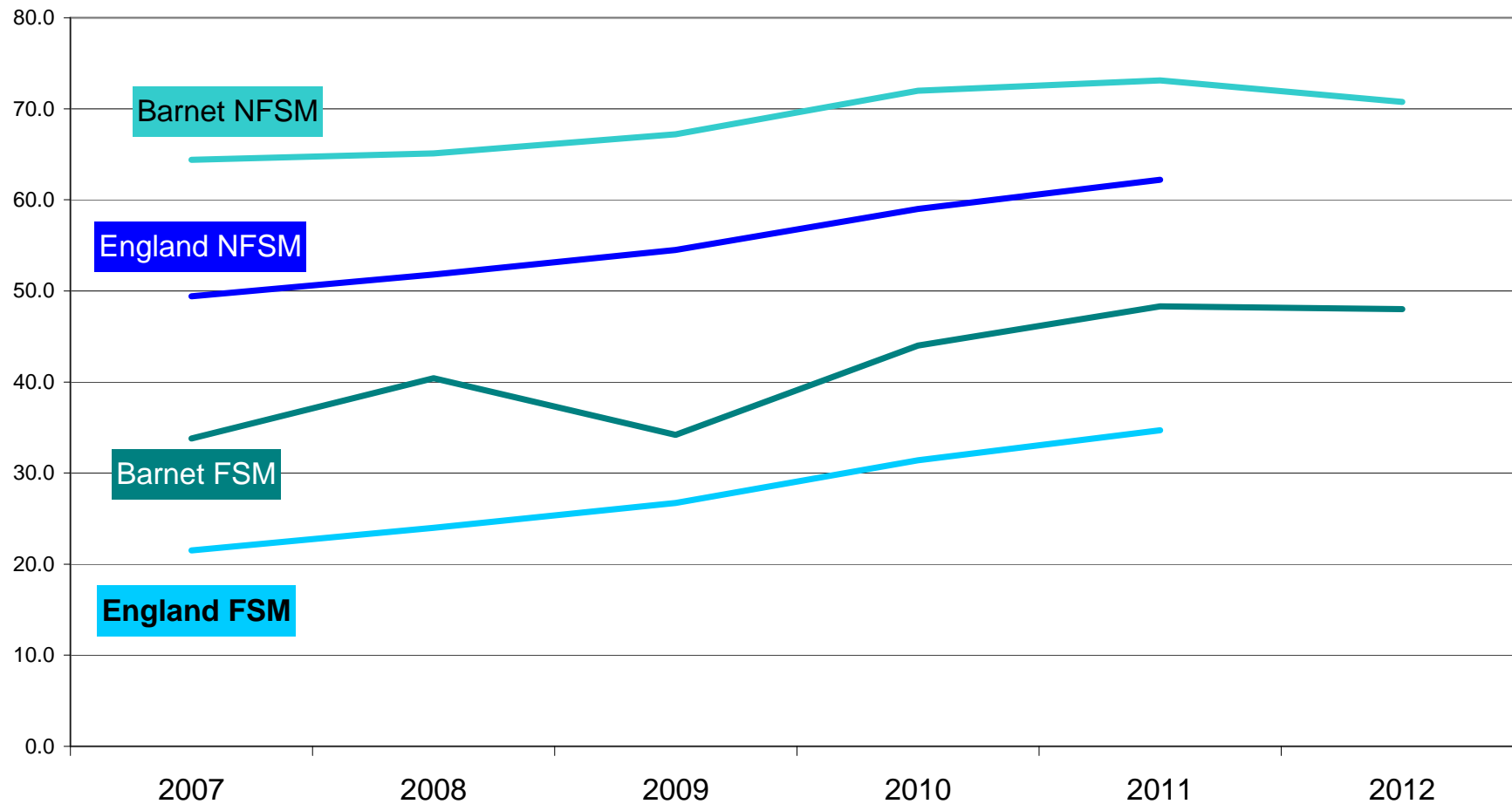
NB: unvalidated data – subject to change

% 5+ A* -C Grades



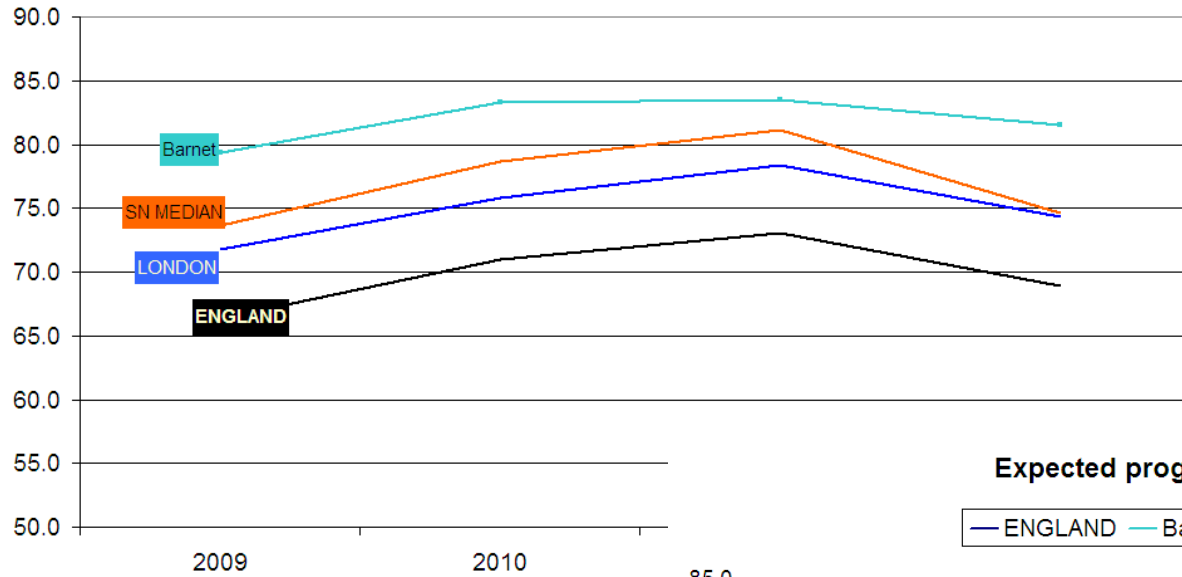
NB: unvalidated data – subject to change

% GCSE 5+A*-C inc E&M 2012: FSM



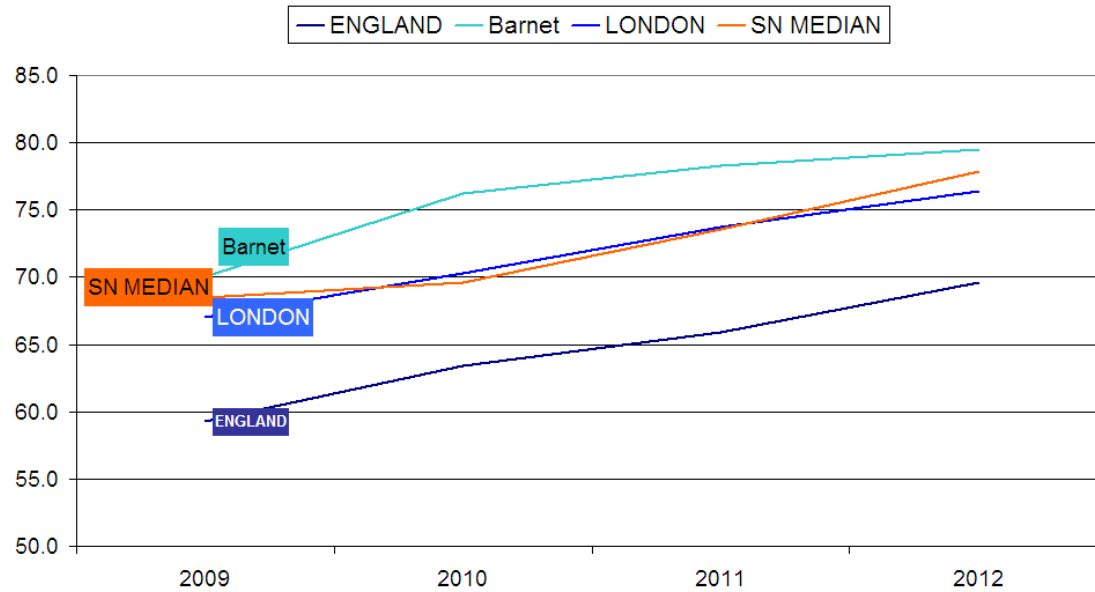
NB: unvalidated data – subject to change

Expected progress KS2- 4: English



Progress from KS2-
KS4 declined for
first time in English
in 2012

Expected progress KS2- KS4: maths

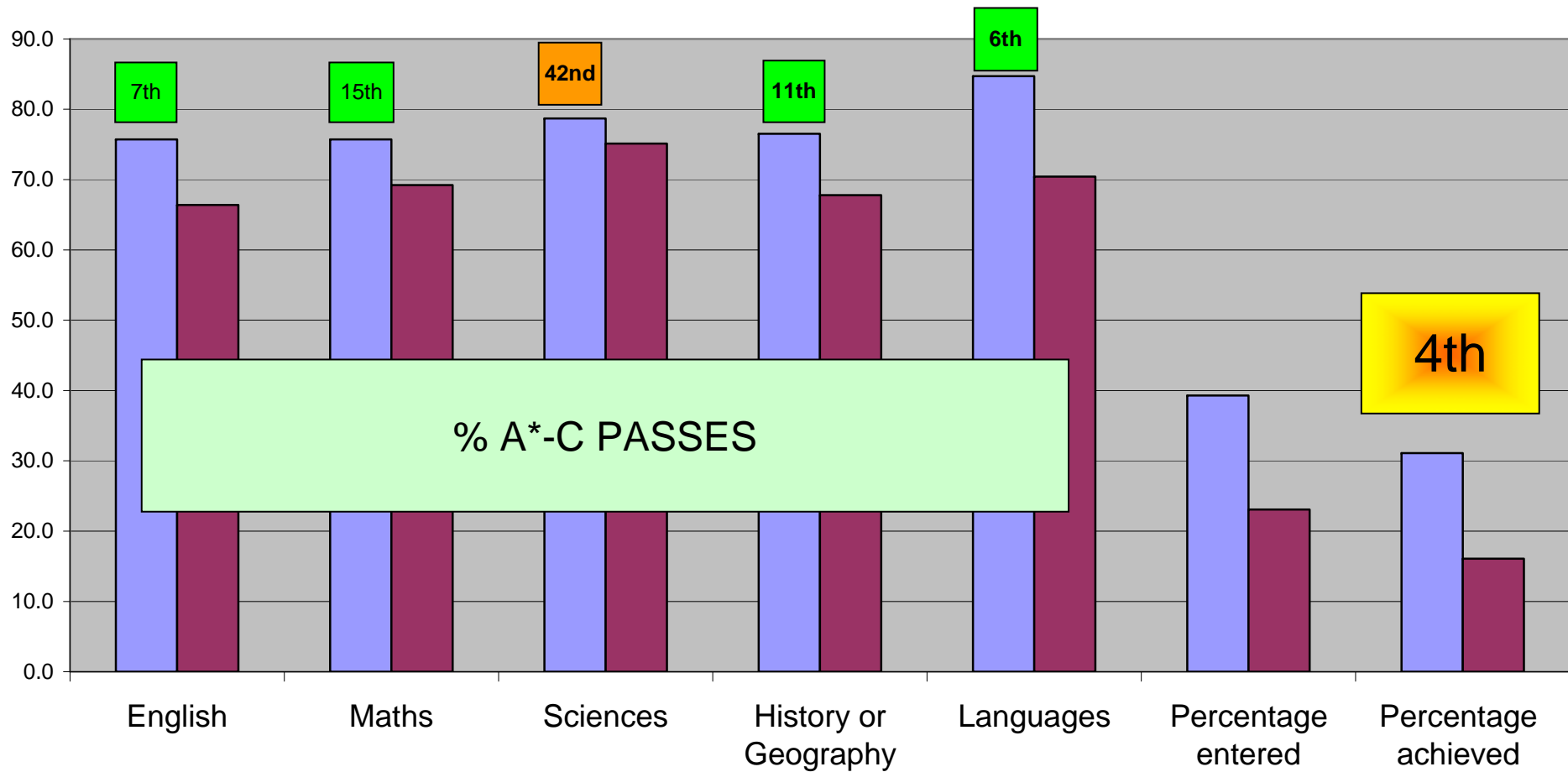


Progress in maths
continued to rise

NB: unvalidated data – subject to change

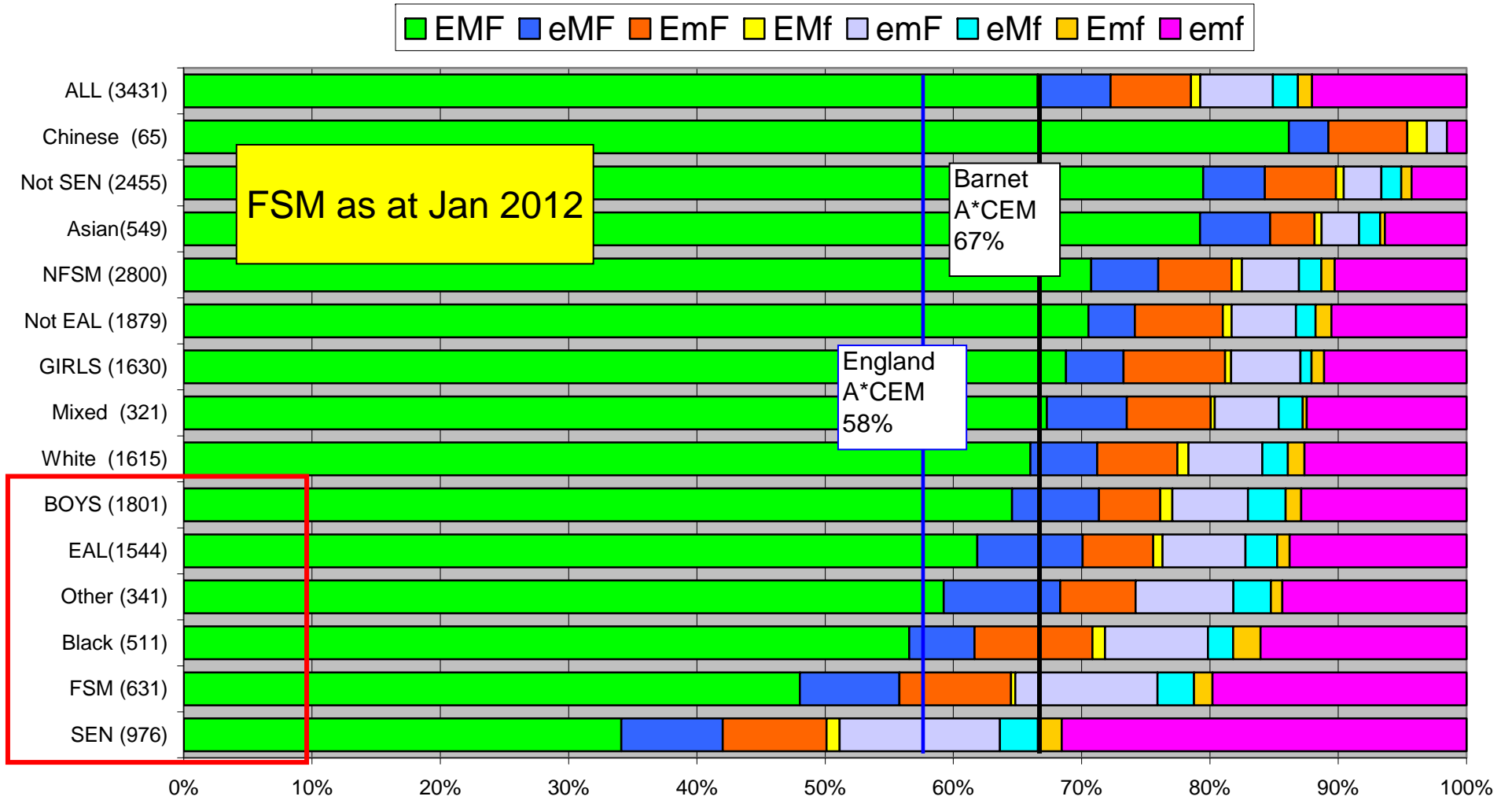
EBAC 2012

Barnet England



NB: unvalidated data – subject to change

BARNET GCSE 2012



NB: unvalidated data – subject to change

Areas for development

- Girls - maths
- Boys – English
- Black pupils (especially BCRB) - maths
- EAL learners – English
- FSM pupils – progress from L4 & L5 in both English and maths

NB: unvalidated data – subject to change

A Level

NB: unvalidated data – subject to change

A LEVEL 2012						
	APS Per Student			APS Per Entry		
	Males	Females	ALL	Males	Females	ALL
ENGLAND	756.1	794.9	776.8	207.2	215.1	211.4
SN MEDIAN	733	778	747	215	221	218
BARNET	816.6	835.0	826.1	224.7	228.5	226.7

Barnet Average Point Score per entry = approx ABB

A* = 300 pts; A = 270 pts; B = 240pts; C = 210 pts; D = 180pts; E = 150pts

NB: unvalidated data – subject to change